



# Quick Start Guide



[www.c-me.de](http://www.c-me.de)



## Specifications:

<b>Size:</b>	130×65×24mm folded
<b>Weight:</b>	150g
<b>WiFi:</b>	2.4 GHz
<b>Image Sensor:</b>	1/2.3 CMOS
<b>Video:</b>	1080P 30 fps*
<b>Photo:</b>	8 MP*
<b>Format:</b>	JPG/MP4 (MPEG-4 AVC/H.264)
<b>Battery:</b>	7.4V 700mAh Lithium Polymer

\*A memory card (2 - 32 GB) is required to record the highest quality photos (8MP) and videos (1080P). Media sent via Wifi will have reduced resolution. (If necessary firmware update via memory card). When using HC memory cards up to 32 GB, it is recommended to format them in Windows FAT32.

### Instant Share

This feature loads your pictures or videos to your favorite social media quickly and easily. Go to Settings ⚙️ and choose which social media service you want to use for instant share 1 and 2. Decide when and if you want to add captions. You will be asked to register with the selected service before or after the flight. When ready to fly, first select either instant share 1 or instant share 2 on the main screen. Next, take pictures or videos as you fly. During your flight (for iOS) or after (for Android), your pictures will be sent to your chosen service.

### 360° Panoramic Video (GPS only)

This function records video as C-me slowly rotates in a circle. First, fly to your chosen location and altitude. Then push the 360 icon.

### Video Record

To start recording a video, select the video icon. To stop, push the square icon.

### Camera

Single shot:  
Press the camera icon or the up/down volume button on your phone.

Self-Timer:  
Push and "hold" the camera icon. Choose timer and then either 3S or 10S.

Multi-picture Burst:  
Push and "hold" the camera icon. Choose burst, then choose the number (3/5/10/15) you want to take.'

### Altitude Slide Bar

Move slider to change altitude (height).

### Turn the C-me

This part of your screen shows you what the C-me camera sees. The image can be moved to the left or the right by swiping the screen. This rotates C-me so the camera will see the picture you want to take.



### Emergency Landing

### Flash

### Directional Controls

Move the control for the direction you want to travel.

### Fine Tuning (Trimming)

Recommended for indoor flying.

### Find Me

This function tells C-me to point in your direction. To use, push the Find Me icon. The icon will be green while active. After it has found you, it will turn off.

### Follow Me (GPS only)

Push the Follow Me icon (it will turn green when active). Once you move, C-me follows you slowly. At any time, you can take a photo or start a video. The Follow me feature stays active until you push the icon to turn it off. C-me may point slightly away from you during Follow me. You can activate Find Me when you wish to point the camera towards you while using Follow Me.

### Settings

From this menu, you can set up and customize C-me, manually calibrate the sensors, access the help menus and the Start Up slide show.

Memory Card Capacity

C-me battery level

Wi-Fi

Unlock

Gallery

GPS signal

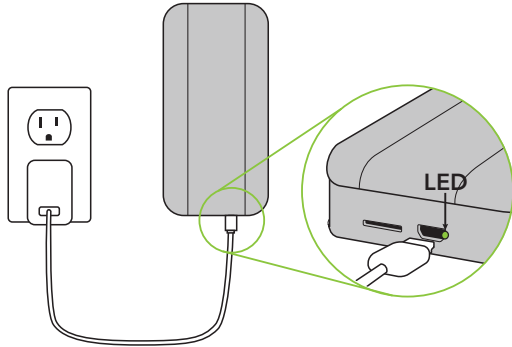
To start C-me in outdoor mode, you need a green icon (see point 9)



# Setup C-me

## 1: Charge the C-me Battery

Charge the C-me battery with the included cable and charge adaptor. When the green LED turns off, the charge is complete. For UK users, charge C-me using the included USB Charge Cord only.



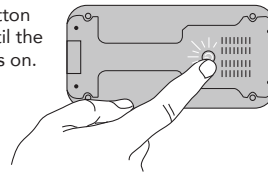
## 2: Get the App

Search in the App Store or on Google Play for "C-me camera" and load the free App onto your Smartphone.



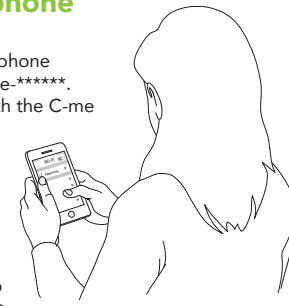
## 3: Turn C-me On

Press the On/Off button and hold it down until the green LED light turns on.



## 4: Connect your phone to C-me

Go to Wi-Fi Settings on your phone and look for the network C-me-\*\*\*\*\*. Connect your smartphone with the C-me network and enter your password "12345678".



We recommend that you personalise your C-me by changing your device name and your password in the app under: Settings > Device > Change Name and Password.

## 5: Open up App



**Important:** Familiarize yourself with the C-me functions by watching the slide show. You can find this help in the app under Setting > HELP > Slideshow,

Apple and the Apple logo are trademarks of Apple Inc., registered in the U.S. and other countries. App Store is a service mark of Apple Inc. Android and Google Play are trademarks of Google Inc.

# Fly C-me

**Important!** Your first flights should **always** be out in the open (outdoor mode).

## 6: Open Arms

Extend the arms.



Open completely.



Open by pulling the notch at the end of each arm. Ensure that the arms click into place.

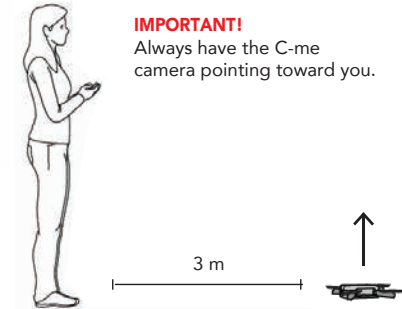
## 7: Fit propeller guards



Fit a propeller guard on each motor arm. Pay attention and ensure that they have correctly clicked into place.

## 8: Start position

**IMPORTANT!** Always have the C-me camera pointing toward you.



Find a wide open area away from trees, buildings, metal and power lines.

**OUTDOORS**  
Takeoff height will be approx. 2 m

## 9: Wait for GPS Signal

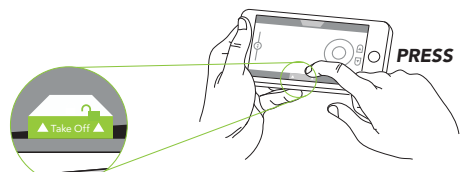
Stop and Wait! C-me may need up to 2 minutes to find quality GPS signals. While it searches for satellites, the GPS icon will be "white". The icon blinks "yellow" as it looks for the strongest signals. When you're safe to fly outdoors, the icon turns solid "green".



You may be prompted to change locations if C-me determines that your area can't provide quality GPS. High-quality GPS signals are essential for smooth and stable flight.

## 10: Start procedure

Press and hold the Lock icon for 2 seconds. Follow the instructions on your smartphone. Tap **Take Off** while it is green. NOTE: For safety, C-me will only stay unlocked for a few seconds.



Keep hands, face, hair and loose clothing away from the rotors.

**IMPORTANT!** You may be asked to calibrate the C-me. Press okay to proceed. Press "Okay" to continue and follow the instructions.

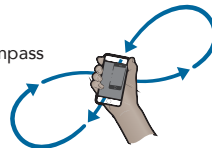
**Note:** You can also carry out manual calibration under "Settings > Calibrate".

## Calibration

### Step 1

Calibrate your phone. This helps C-me pinpoint your location more accurately.

**iOS:** Launch your phone compass app and move your phone in a Figure-8 motion at least three times.



**Android:** Open Google Maps, click your current location, and run "Calibrate Compass".

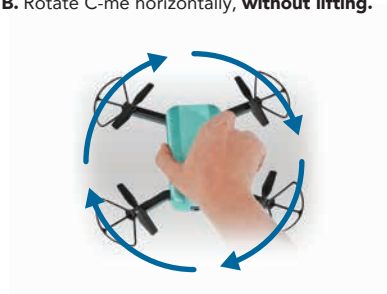
### Step 2

Calibrate Accelerometer. Make sure C-me is on a flat, level surface.

### Step 3

Calibrate compass. This helps C-me pinpoint your location more accurately.

- A. Set C-me flat on the ground. Hold your phone at least 0.75 m away.
- B. Rotate C-me horizontally, **without lifting**.



C. When the video switches to vertical, pick up C-me slightly off the ground and rotate with the camera pointing down.



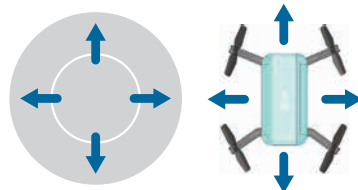
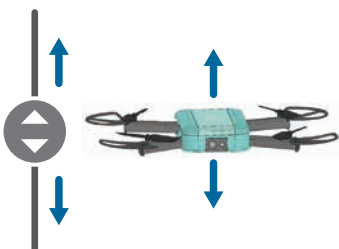
When ready to fly, push the UNLOCK icon, select your mode (indoor / outdoor), and then Take-Off to launch.



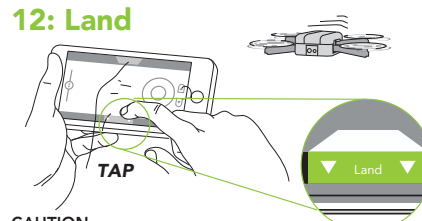
## 11: Controls

Move slider to change altitude (height).

Move your finger in this area to change direction of travel.



## 12: Land

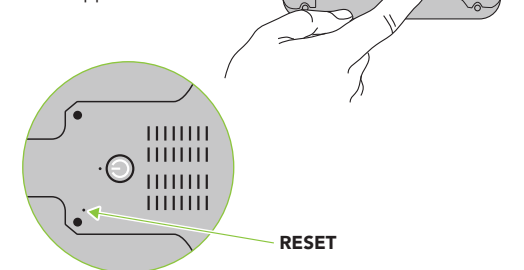


### CAUTION:

When landing outside (in outdoor mode), C-me will move higher first (3 m), then move over to the landing point, then slowly land. This is a safety feature to reduce the chance of hitting obstacles that may be in its flight path (Exception: if Follow Me is activated, C-me lands immediately. If you need to land in a case of emergency, press the icon **EMERGENCY**).

## 13: Power Off


Push and hold until light goes out. Completely close down app.



# IMPORTANT: FIRST READ, THEN FLY!

Dear Customer,

the C-me is an innovative product. To be able to enjoy it for a long time, please pay attention to the following:

1. First read the quick-start instructions. Follow the steps 1 to 5 under "Set-up C-me". Familiarize yourself with the C-me functions by watching the slide show. You can find this help in the app under Setting  > HELP > Slideshow
2. Your first flights should ALWAYS be out in the open in **outdoor mode**.
3. Please pay attention to the safety instructions on our separately enclosed information sheet.
4. For further information, please visit **www.c-me.de**

Ersatzteile bekommen Sie im Online Shop unter  
[www.revell-shop.de](http://www.revell-shop.de)

( **D** **A** **CH** **B** **L** **NL** **GB** **F** )

oder bei Ihrem Händler vor Ort.

**D** Ersatzteil-Bestellungen aus den übrigen Ländern werden über die jeweiligen Distributeure abgewickelt.

Bitte kontaktieren Sie Ihren Händler oder Ihren zuständigen Distributeur.

**GB** Spare part orders from other countries are processed by the local distributors.

Please contact your dealer or responsible distributor.

20050 0387 V01.16