



## "Sinalco" Showtruck & Trailer

Im Jahre 1902 erfindet Friedrich Eduard Bilz ein schmackhaftes Erfrischungsgetränk, die „Bilz-Brause“, die sofort zahlreiche Käufer regelrecht begeistert. Der überraschend gute Erfolg zieht aber auch eine Reihe von Imitationen nach sich. Um diese Nachahmungen markenrechtlich zu unterbinden, wird im Rahmen eines Preisausschreibens ein passender Name gesucht, wobei die Bezeichnung „Sinalco“ als Abkürzung für den lateinischen Ausdruck „sine alcohole“ (ohne Alkohol) ausgewählt wird. 1905 ist der Markenname „Sinalco“ geboren. Schon zwei Jahre später beginnt der Export mit den Schwerpunkten Südamerika und Nahost, Start eines weltweiten Siegeszuges. 1937 kommt der rote Punkt als weiteres Markenzeichen hinzu. Der jetzige Eigentümer von Sinalco, die Sinalco International und deren Unternehmenstochter "Deutsche Sinalco GmbH Markengetränke & Co. KG" mit Sitz im nordrhein-westfälischen Duisburg, feiert 2005 das 100jährige Bestehen dieser ältesten Softdrinkmarke Europas mit zahlreichen Events. Bundesweit kommt dabei ein Truck-Trailer Gespann zu PR- und Werbezwecken zum Einsatz. Die eingesetzte, vielseitige Zugmaschine, ein schwerer „Conventional“ (Haubenlenker), wurde ursprünglich für den Schwerlastbereich konstruiert. Sie ist, je nach Bedarf, mit unterschiedlichen, großvolumigen Motortypen von 400 PS aufwärts ausgestattet.

## "Sinalco" Showtruck & Trailer

In 1902 Friedrich Eduard Bilz invented a delicious refreshing beverage called "Bilz-Brause" that quickly became popular with large numbers of customers. However, this amazing success gave rise to a whole series of imitations. In order to put a stop to these imitations under the trade marks law, a competition was held to find a suitable name. The name "Sinalco" which was an abbreviation of the Latin "sine alcohole" (non alcoholic) was selected. In 1905 the trade name "Sinalco" was born. Only two years later exports started, primarily to South America and the Near East, and the drink became a triumph world-wide. In 1937 the red dot became another trade mark. In 2005 the present owners of "Sinalco", Sinalco International and their German subsidiary Deutsche Sinalco GmbH Markengetränke & Co. KG with their head office in Duisburg, celebrated the centenary of the oldest soft drink label in Europe with numerous events. Throughout Germany a truck-trailer combination was used for PR and publicity purposes. The versatile tractor used, a heavy conventional cab-behind-engine truck was originally designed for heavy-duty haulage. According to requirements, it can be equipped with various types of powerful engines from 400 hp upwards.



## Verwendete Symbole/Used Symbols

Bitte beachten Sie folgende Symbole, die in den nachfolgenden Baustufen verwendet werden.

**Veillez noter les symboles indiqués ci-dessous, qui sont utilisés dans les étapes suivantes du montage.**

Sírvanse tener en cuenta los símbolos facilitados a continuación, a utilizar en las siguientes fases de construcción.

**Si prega di fare attenzione ai seguenti simboli che vengono usati nei susseguenti stadi di costruzione.**

Huomioi seuraavalla symbolilla, jotta käytetään seuraavissa kokonaisuissa.

**Legg merke til symbolene som benyttes i monteringsstoppene som følger.**

Prosze zwracać na następujące symbole, które są użyte w ponizszych etapach montażowych.

**Daha sonraki montaj basamaklarında kullanılabacak olan, aşağıdaki semboller lütfen dikkat edin.**

Kérjük, hogy a következő szimbólumokat, melyek az alábbi építési fokokban alkalmazásra kerülnek, vegyék figyelembe.

Please note the following symbols, which are used in the following construction stages.

**Neem a.u.b. de volgende symbolen in acht, die in de onderstaande bouwfasen worden gebruikt.**

Por favor, preste atención aos símbolos que seguem para os mesmos serão usados nas próximas etapas de montagem.

**Observera: Nedanstående piktogram används i de följande arbetsmomenten.**

Lag ymligst märke till följande symboler, som benyttes i de följande byggfaserna.

Показується, обратите внимание на следующие символы, которые используются в последующих операциях сборки.

Παρακάτω προσέξτε τα παρακάτω σύμβολα, τα οποία χρησιμοποιούνται στις παρακάτω βεβαιώς αναμενόμενες φάσεις συναρμολόγησης.

**Dbejte prosím na dále uvedené symboly, které se používají v následujících konstrukčních stupních.**

Prosimo za Vašu pozornost na sledeče simbole ki se uporabljajo v naslednjih korakih gradbe.



Kleben  
Glue  
Coller  
Lijmen  
Engomar  
Colar  
Incollare  
Limmas  
Limmaa  
Klæbning  
Lim  
Клеить  
Przykleić  
κόλλημα  
Yapıştırma  
Lepení  
ragasztani  
Lepiti



Nicht kleben  
Don't glue  
Ne pas coller  
Niet lijmen  
No engomar  
Não colar  
Non incollare  
Limmas ej  
Älä liimaa  
Må ikke klæbes  
Ikke lim  
Не клеить  
Nie przyklejać  
μη κολλάτε  
Yapıştırılmayın  
Nelepi  
nem szabad ragasztani  
Ne lepiti



Wahlweise  
Optional  
Facultatif  
Naar keuze  
No engomar  
Alternado  
Facoltativo  
Valfritt  
Vaihtoehtoisesti  
Efter eget valg  
Valgfritt  
На выбор  
Do wyboru  
εναλλακτικά  
Sermeli  
Voiteline  
tetszés szerinti  
način izbire



Anzahl der Arbeitsgänge  
Number of working steps  
Nombre d'étapes de travail  
Het aantal bouwstappen  
Número de operaciones de trabajo  
Número de etapas de trabalho  
Numero di passaggi  
Antal arbetsmoment  
Työvaiheiden lukumäärä  
Antal arbejdsforløb  
Antall arbeidsstrinn  
Количество операций  
Liczba operacji  
αριθμός των εργασιών  
İş safhalarının sayısı  
Počet pracovných operáci  
a munkafolyamatok száma  
Številka koraka montaže



Mit einem Messer abtrennen  
Detach with knife  
Détacher au couteau  
Met een mesje afsnijden  
Separarlo con un cuchillo  
Separar utilizando uma faca  
Staccare col coltello  
Skär loss med kniv  
Irrota veitsellä  
Adskilles med en kniv  
Skjær av med en kniv  
Отделять ножом  
Odciać nożem  
διαχωρίστε με ένα μαχαίρι  
Bir bıçak ile kesin  
Oddélit pomocí nože  
kés segítségével leválasztani  
Oddelji z nožem



Abziehbild in Wasser einweichen und anbringen  
Soak and apply decals  
Mouiller et appliquer les décalcomanies  
Transfer in water even laten weken en aanbrengen  
Remojar y aplicar las calcomanías  
Por de molho em água e aplicar o decalque  
Immergere in acqua ed applicare decalcomanie  
Blöt och fäst dekalerne  
Kostuta siirtokuvaa vedessä ja aseta paikalleen  
Overføringsbilledet lægges i blød og anbringes  
Dypp bildet i vann og sett det på  
Первоначную картинку намочить и нанести  
Zmniekzyć kalkomanie w wodzie a następnie nakleić  
Βουτήξτε τη χαλκομανία στο νερό και τοποθετήστε την  
Çikartmayı suda yumuşatın ve koyun  
Obtisk namočite ve vide a umistit  
a matricát vízben beáztatni és felhelyezni  
Preslikač potopiti in vodo in zatem nanašati



Bauteile trocken lassen  
Laisser sécher les pièces  
Dejar secar las piezas  
Deixar secar os componentes  
La delene tørke  
Allow the parts to dry  
Oderdelen laten drogen  
Far asciugarsi i componenti  
Anna osien kuivua  
Låt byggedelarna torka  
Lad komponenterne tørre  
Szecsi pozostawić do wyschnięcia  
Yapı parçalarını kurumaya bırakınız  
Επιθεωρήστε τη μύτη της στεγνωσμού  
Alkatrészeket hagyja száradni  
Pustite da sestavni deli posušijo  
Дать деталям высохнуть



Klebeband  
Adhesive tape  
Dévidoir de ruban adhésif  
Plakband  
Cinta adhesiva  
Fita adesiva  
Nastro adesivo  
Tejp  
Teippi  
Tape  
Tape  
Клейкая лента  
Taşma klejçaya  
κολλητική ταινία  
Yapıştırma bandı  
Lepící páska  
ragasztószalag  
Traka za lepilom



Abbildung zusammengesetzter Teile  
Illustration of assembled parts  
Figure représentant les pièces assemblées  
Afbelding van samengevoegde onderdelen  
Ilustración piezas ensambladas  
Figura representando peças encaixadas  
Illustrazione delle parti assemblate  
Bildern visar delarna hopsatta  
Kuva yhteennitellystä osista  
Illustration af sammensatte dele  
Illustrasjon, sammensatte deler  
Изображение смонтированных деталей  
Rysunek złożonych części  
απεικόνιση των συναρμολογημένων εξαρτημάτων  
Birləşdirilən parçaların şekli  
Zobrazení sestavených dílů  
összeállított alkatrészek ábrája  
Slika slopljenega dela



Chromteile  
Chrom parts  
Pièces chromées  
Chroom onderdelen  
Cromar las piezas  
Peça cromada  
Parti cromate  
Kromdetaljer  
Kromatut osat  
Krom-dele  
Kromdeler  
Хромированные детали  
Elementy chromowane  
εξαρτήματα χρωμίου  
Krom parçaları  
Chrómové díly  
króm alkatrészek  
Kromirani deli



Klarsichtteile  
Clear parts  
Pièces transparentes  
Transparente onderdelen  
Limpiar las piezas  
Peça transparente  
Parte transparente  
Genomsiktliga detaljer  
Läpinäkyvät osat  
Gennemsigtige dele  
Gjennomsiktige deler  
Прозрачные детали  
Elementy przezroczyste  
διαφανή εξαρτήματα  
Şeffaf parçalar  
Průzračné díly  
áttetsző alkatrészek  
Deli ki se jasno vide



Loch bohren  
Make a hole  
Faire un trou  
Practicar un taladro  
Perfurar  
Fare un foro  
Borra hål  
Poraa reikä  
Der bores et hul  
Bor hull  
Просверлить отверстие  
wywiercić otwór  
ανοίξτε τρύπα  
Delik açın  
Vyyrtat díru  
lyukat fúrni  
Narediti lukinjo



Gleichen Vorgang auf der gegenüberliegenden Seite wiederholen  
Repeat same procedure on opposite side  
Opérer de la même façon sur l'autre face  
Dezelfde handeling herhalen aan de tegenoverliggende kant  
Realizar el mismo procedimiento en el lado opuesto  
Repetir o mesmo procedimento utilizado no lado oposto  
Stessa procedura sul lato opposto  
Upprepa proceduren på motsatta sidan  
Toista sama toimenpide kullen viereisellä sivulla  
Det samme arbejdet gentages på den modsatliggende side  
Gjenta prosedyren på siden tværs overfor  
Повторять такую же операцию на противоположной стороне  
Taki sam przebieg czynności powtórzyc na stronie przeciwnej  
επιτελέστε την ίδια διαδικασία στην απέναντι πλευρά  
Aynı işlemi karşı tarafta tekrarlayın  
Stejný postup zopakovat na protilehlé straně  
ugyanazt a folyamatot a szemben található oldalon megismételni  
Isti postopek ponoviti in na suprotni strani



Spitze eines Schraubenziehers erhitzen und auf das herausragende Ende des Plastikstiftes drücken  
Heat tip of screwdriver and press on protruding end of plastic pin  
Chauffer la pointe du tournevis et appuyer sur la partie saillante de l'extrémité en plastique  
De punt van een schroevendraaier verhitten en op het uitstekende einde van de plastic stift drukken  
Calentar la punta de un destornillador y oprimir con ella el extremo sobresaliente del pasador de plástico  
Aquecer a ponta de uma chave de fendas e pressionar contra a ponta exposta da vareta de plástico  
Riscaldare la punta di un cacciavite e premere la sull'estremità sporgente del perno di plastica  
Värm spetsen på en skruvmejsel och tryck på plaststiftets utstickande ände  
Kuumentaa ruuvitaltan kärki ja paina sillä ulostyönnälyän muovitapin päätä  
Spidsen af en skrue/trækker opvarmes og trykkes mod den ende af plastikstiften, der rager ud  
Varm opp spissen på en skrutekker og trykk den op den enden av plaststiften som stikker ut  
Нагреть острие отвертки и надавить на выступающий конец пластикового штифта  
Θερμαζατέ το γοράς czubek śrubokręta i przyłożyc do wystającej końcówki plastikowego trzpienia  
Βεβαιώνετε την μύτη ενός κατσβιδιού και πιέστε την στο τέμα του πλαστικού πειρου που εξέχει  
Bir tornavidanın ucunu ısıtın ve dışarı sarkan plastik pim'in ucunu bastırın  
Hrot šroubováku ohřát a vtláčit na vyčnívající konec kolíku z plastické hmoty  
egy csavarhúzó hegyét felhevíteni és a műanyag csap kiálló végére nyomni  
Zagreti vrh odvijač in z njim pritisniti konec plastičnega svinčnika ki gleda ven



Entfernen  
Remove  
Détacher  
Verwijderen  
Sacar  
Retirar  
Eliminare  
Tag loss  
Poista  
Fjernes  
Fjern  
Удалить  
Usunąć  
απομακρύνετε  
Temizleyin  
Odstranit  
eltávolítani  
Ostraniti

**D: Beiliegenden Sicherheitstext beachten und nachschlagebereit halten.**

E: Please note the enclosed safety advice and keep safe for later reference.

**F: Respecter les consignes de sécurité ci-jointes et les conserver à portée de main.**

NL: Houdt u aan de bijgaande veiligheidsinstructies en hou deze steeds bij de hand.

**E: Observar y siempre tener a disposición este texto de seguridad adjunto.**

I. Seguire le avvertenze di sicurezza allegate e tenerle a portata di mano.

**P: Ter em atenção o texto de segurança anexo e guard-lo para consulta.**

S: Beakta bifogad säkerhetstext och håll den i beredskap.

**FIN: Huomioi ja säilytä oheiset varoitukset.**

DK: Overhold vedlagte sikkerhedsanvisninger og hav dem liggende i nærheden.

**N: Ha alltid vedlagt sikkerhetstekst klar til bruk.**

RUS: Соблюдать прилагаемый текст по технике безопасности, хранить его в легко доступном месте.

**PL: Stosować się do załączonej karty bezpieczeństwa i mieć ją stale do wglądu.**

GR: ροσ έτε τις συνημνές υποδείξεις ασ άλειας και υλάξτε τις τει ώστε να τις χτε πάντα σε άιαθ ση ασ.

**TR: Ekteki güvenli talimatlarını dikkate alıp, bakabileceğiniz bir şekilde muafaza ediniz.**

CZ: Dbejte na příložený bezpečnostní text a mŕjte jej pŕiipravenŕ na dosah.

**H: A mellékelt biztoms-gi szöveget vegye figyelembe és tartsa fellepoz-sra készen!**

SLO: Priložena varnostna navodila izvajajte in jih hranite na vsem dostopnem mestu.

## Benötigte Farben/Used Colors

Benötigte Farben Required colours	Peintures nécessaires Benodigde kleuren	Pinturas necesarias Tintas necessárias	Colori necessari Använda färger	Tarvittavat värit Du trenger følgende farger	Nødvendige farger Необходимые краски	Potrzebne kolory Απαιτούμενα χρώματα	Gerekli renkler Potřebné barvy	Szükséges színek Potrebne barve
<b>A</b> schwarz, seidenmatt 302 black, silky-matt noir, satiné mat zwart, zijdemat negro, mate seda preto, fosco sedoso nero, opaco seta svart, sidenmatt musta, silkinhimmeä sort, silkematt sort, silkematt черный, шелковисто-матовый czarny, jedwabisto-matowy μαύρο, μεταξωτό ματ siyah, ipek mat černá, hedvábně matná fekete, selyemmatt črna, svila mat	<b>B</b> aluminium, metallic 99 aluminium, metallic aluminium, métallique aluminium, metallic aluminio, metalizado alumínio, metálico aluminio, metallico aluminium, metallic alumiini, metallikiilto aluminium, metallak aluminium, metallic алюминиевый, металл aluminium, metaliczny αλουμινίου, μεταλλικό aluminium, metalik hliniková, metaliza aluminium, metáll aluminijum, metalik	<b>C</b> anthrazit, matt 9 anthracite grey, matt anthracite, mat antraciet, mat antracita, mate antracite, fosco antracite, opaco antracit, matt antrasitiiti, himmeä koksgrå, mat antrasit, matt антрацит, матовый aluminium, metaliczny ανθρακί, ματ antrasit, mat antracit, matná antracit, matt tamno siva, mat	<b>D</b> grau, seidenmatt 378 grey, silky-matt gris, satiné mat grijs, zijdemat gris, mate seda cinzento, fosco sedoso grigio, opaco seta grå, sidenmatt harmaa, silkinhimmeä grå, silkematt grå, silkematt серый, шелковисто-матовый antracyt, matowy γκρι, μεταξωτό ματ grí, ipek mat šedá, hedvábně matná szürke, selyemmatt siva, svila mat	<b>E</b> feuerrot, seidenmatt 330 fiery red, silky-matt rouge feu, satiné mat rood helder, zijdemat rojo fuego, mate seda vermelho vivo, fosco sedoso rosso fuoco, opaco seta eldröd, sidenmatt tulipunainen, silkinhimmeä ildröd, silkematt ildröd, silkematt огненно-красный, шелк.-матовый czerwony ognisty, jedwabisto-mat. κόκκινο φωτιάς, μεταξωτό ματ ateş kırmızısı, ipek mat ohnivě červená, hedvábně matná tűzpiros, selyemmatt ogenj rdeča, svila mat	<b>F</b> silber, metallic 90 silver, metallic argent, métallique zilver, metallic plata, metalizado prata, metálico argento, metallico silver, metallic hopea, metallikiilto solv, metallak solv, metallic серебристый, металл srebro, metaliczny ασμύ, μεταλλικό gümüş, metalik stříbrná, metaliza ezüst, metáll srebrna, metalik			

**G**  
rost, matt 83  
rust, matt  
rouille, mat  
roest, mat  
orin, mate  
ferrugem, fosco  
color ruggine, opaco  
rost, matt  
ruoste, himmeä  
rust, mat  
rust, matt  
ржавчина, матовый  
rdzawy, matowy  
χρώμα σκουριάς, ματ  
pas rengi, mat  
rezavá, matná  
rozsdá, matt  
rjava, mat

**H**  
weiß, seidenmatt 301  
white, silky-matt  
blanc, satiné mat  
wit, zijdemat  
blanco, mate seda  
branco, fosco sedoso  
bianco, opaco seta  
vit, sidenmatt  
valkoinen, silkinhimmeä  
hvid, silkematt  
hvit, silkematt  
белый, шелковисто-матовый  
biały, jedwabisto-matowy  
λευκό, μεταξωτό ματ  
beyaz, ipek mat  
bílá, hedvábně matná  
fehér, selyemmatt  
bela, svila mat

**I**  
orange, klar 730  
orange, clear  
orange, clair  
oranje, helder  
naranja, claro  
laranja, claro  
arancione, chiaro  
orange, klar  
oranssi, kirkas  
orange  
orange  
оранжевый  
pomarańczowy  
πορτοκαλί, διαυγές  
portakal, şeffaf  
oranžová, čirá  
narancs, áttetsző  
pomarandzasta, jasna

**J**  
rot, klar 731  
red, clear  
rouge, clair  
rood, helder  
rojo, claro  
vermelho, claro  
rosso, chiaro  
röd, klar  
punainen, kirkas  
orange  
rød  
красный  
szenwień  
κόκκινο, διαυγές  
kırmızı, şeffaf  
červená, čirá  
piros, áttetsző  
rdeča, jasna

**K**  
panzergrau, matt 78  
tank grey, matt  
gris blindé, mat  
pantsergrijs, mat  
plomizo, mate  
laranja, claro  
vermelho, fosco  
color carro armato, opaco  
pansargrå, matt  
panssarinharmaa, himmeä  
kampvogngrå, mat  
pansergrå, matt  
серый танк, матовый  
szary czolg., matowy  
πορτοκαλί, διαυγές  
panzer grisi, mat  
pancéřově šedá, matná  
páncélszürke, matt  
oklopno siva, mat

**L**  
gelb, glänzend 12  
yellow, gloss  
jaune, brillant  
geel, glansend  
amarillo, brillante  
amarelo, brilhante  
giallo, lucente  
gul, blank  
keltainen, kiiltävä  
gul, skinnende  
gul, blank  
желтый, блестящий  
zółty, blyszczący  
κίτρινο, γυαλιστερό  
sarı, parlak  
žlutá, lesklá  
sárga, fényes  
rumena, bleskajoča

**M**  
staubgrau, matt 77  
dust grey, matt  
gris poussière, mat  
stofgrijs, mat  
ceniciento, mate  
cinzento de pó, fosco  
grigio sabbia, opaco  
dammgrå, matt  
pölynharmaa, himmeä  
støvgrå, mat  
støvgrå, matt  
серый пыльный, матовый  
szary kurz, matowy  
χρώμα σκόνης, ματ  
toz grisi, mat  
prachově šedá, matná  
porszürke, matt  
prah siva, mat

**N**  
weiß, matt 5  
white, matt  
blanc, mat  
wit, mat  
blanco, mate  
branco, fosco  
bianco, opaco  
vit, matt  
valkoinen, himmeä  
hvid, mat  
hvit, matt  
белый, матовый  
biały, matowy  
λευκό, ματ  
beyaz, mat  
bílá, matná  
fehér, matt  
bela, mat

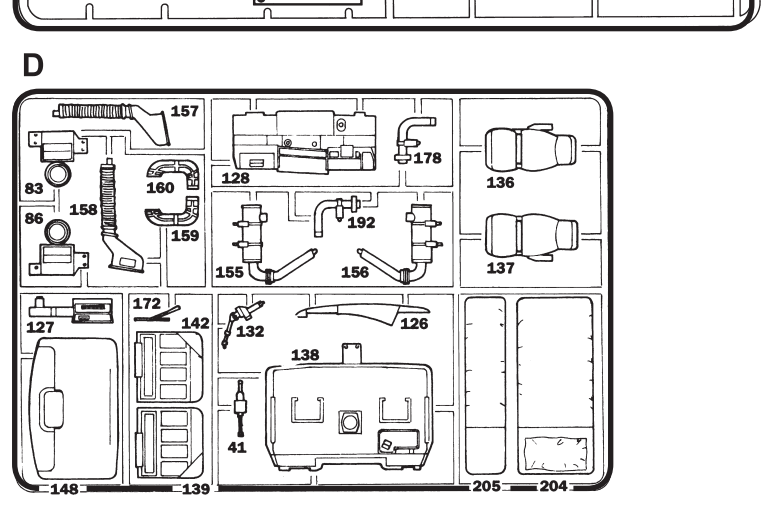
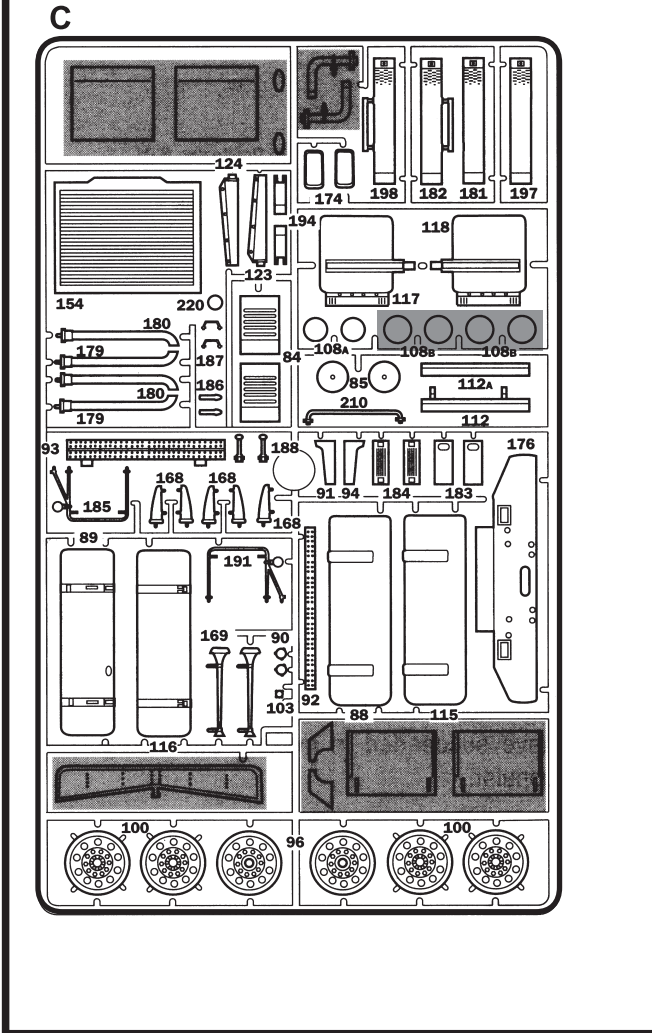
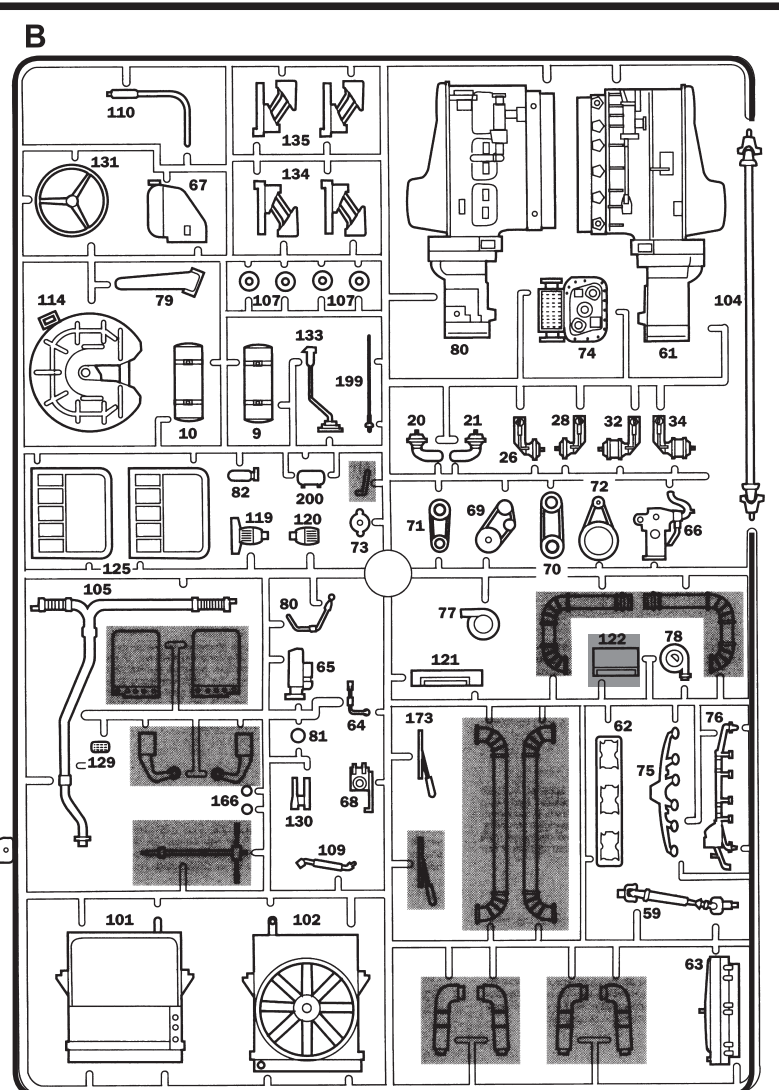
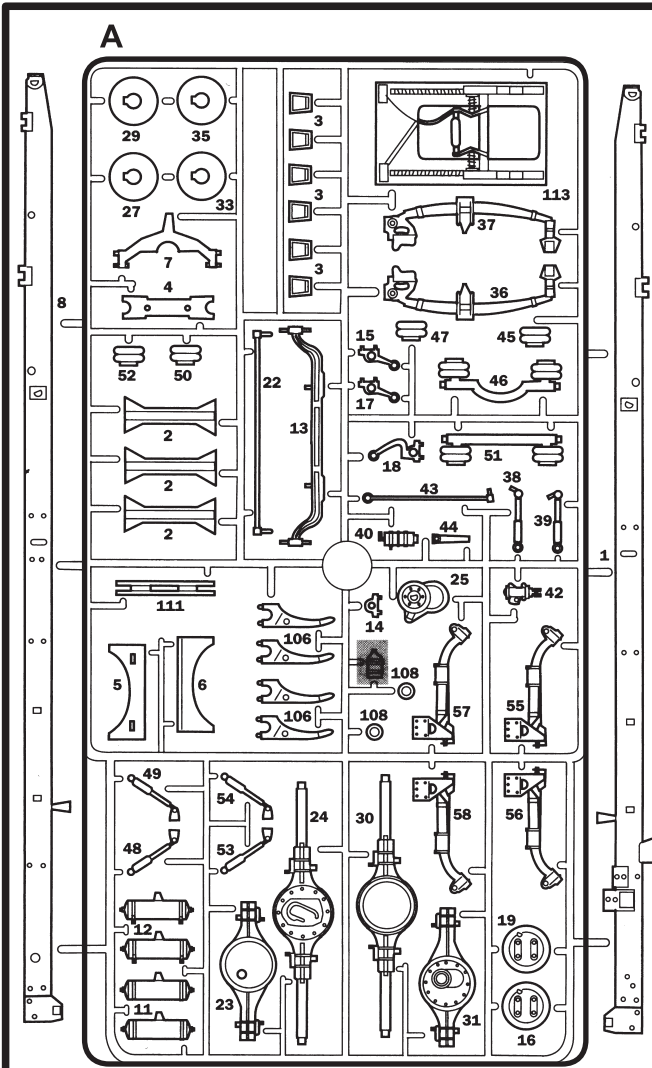
**O**  
schwarz, glänzend 7  
black, gloss  
noir, brillant  
zwart, glansend  
negro, brillante  
preto, brilhante  
nero, lucente  
svart, blank  
musta, kiiltävä  
sort, skinnende  
sort, blank  
черный, блестящий  
czarny, blyszczący  
μαύρο, γυαλιστερό  
siyah, parlak  
černá, lesklá  
fekete, fényes  
črna, bleskajoča

Dieser Bausatz wurde in mehrfachen Qualitäts- und Gewichtskontrollen auf Vollständigkeit überprüft. Reklamationen können nur bearbeitet werden, wenn die **Bauanleitung**, das aus der Kartonage herausgeschnittene **EAN-Strichcode-Feld** und der **Kassenbon** eingeschickt werden. Bitte haben Sie Verständnis dafür, dass wir nur Gewährleistung bei aktuellen Artikeln übernehmen können, die im Zeitraum der letzten 24 Monate erworben worden sind. **Unfrei eingesandte Reklamationssendungen werden von uns nicht angenommen!** „Einzelteile für Umbauten können gegen Vorkasse erworben werden“. Unsere Adresse: Revell GmbH & Co. KG, Abteilung X, Henschelstr. 20-30, 32257 Bünde. Dieser Direktservice gilt für die Länder: Deutschland, Benelux, Österreich, Frankreich, Großbritannien. Reklamationen aus den übrigen Ländern werden über die jeweiligen Distributeure abgewickelt. Bitte kontaktieren Sie Ihren Händler.

*This Model Kit has been subject to extensive quality and weight checks during the manufacturing process to ensure it leaves our warehouse in perfect condition. We are only able to process applications for missing parts if the following procedure is followed. In all cases the following will be required before we are able to process any request: Original receipt (proof of purchase) original instruction sheets (will be returned) and the bar code cut out of the box. We may not be able to process requests for products that have been discontinued for more than 24 months. Products that are returned directly to us without prior authorisation by a company representative will not be accepted and returned to sender. Replacement parts for conversion or spares will continue to be available however they will incur a handling charge. Please write to: Department X, Revell GmbH & Co. KG, Henschelstr 20-30, 32257 Bünde. This direct service is only available in the following markets: Germany, Benelux, Austria, France & Great Britain, Revell GmbH & Co. KG, Boston Hous, 64-66 Queensway, Hemel Hempstead, Herts, HP2 5HA, Great Britain. For all other markets please contact your local dealer or distributor directly.*

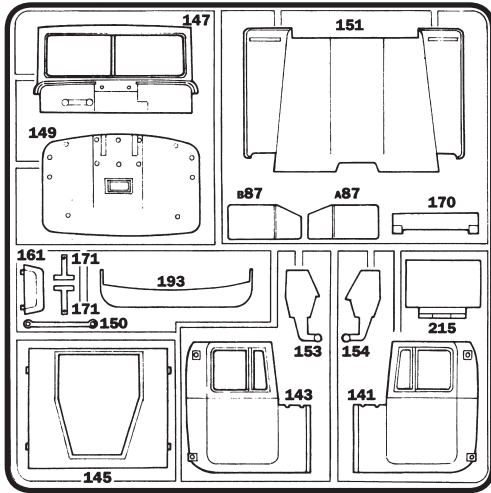
Afin de vous donner entière satisfaction et pour nous assurer que tous les éléments nécessaires au montage de votre maquette sont présents dans la boîte, cet article a subi dans son intégralité divers contrôles qualitatifs ainsi que des contrôles de poids. Si toutefois vous deviez nous faire part de certaines réclamations, nous vous prions de bien vouloir vous adresser à votre revendeur habituel, muni de la notice de montage, du code EAN découpé sur la boîte, ainsi que de votre ticket de caisse. Le SAV ne sera assuré que pour les articles ayant été acquis depuis moins de 24 mois. Les pièces de rechange utilisées pour la transformation de maquettes pourront être obtenues en pré-paiement. Dans le cas où vous n'obtiendriez pas satisfaction, vous pouvez vous adresser directement à notre service SAV à l'adresse suivante: REVELL GmbH & Co. KG, Abteilung X, Henschelstraße 20-30, D-32257 Bünde ou Revell GmbH & Co. KG, 14 B, rue du Chapeau Rouge, F-21000 Dijon, France. Pour tous les autres marchés, merci de prendre contact avec votre détaillant ou distributeur.

*Deze bouwdoos werd verscheidene malen volledig gecontroleerd op kwaliteit en gewicht. Klachten kunnen slechts in behandeling worden genomen indien de bouwhandleiding, de uit de doos geknipte EAN - streepjescode en de kassabon zijn meegezonden. Wij vragen om uw begrip dat wij alleen garantie kunnen geven voor huidige artikelen die binnen een periode van de laatste 24 maanden zijn gekocht. Onvolledig ingezonden klachten kunnen niet in behandeling worden genomen. Onderdelen voor ombouw kunnen tegen vooruitbetaling gekocht worden. Ons adres is: Revell GmbH & Co. KG, Afdeling X, Henschelstrasse 20-30, 32257 Bünde, Duitsland. Deze directe service geldt alleen voor de volgende landen: Duitsland, Benelux, Oostelijk Frankrijk, Groot-Brittannië. Klachten afkomstig uit overige landen worden via de eventuele lokale vertegenwoordigers van Revell afgewikkeld. Wij verzoeken U contact op te nemen met uw winkelier.*

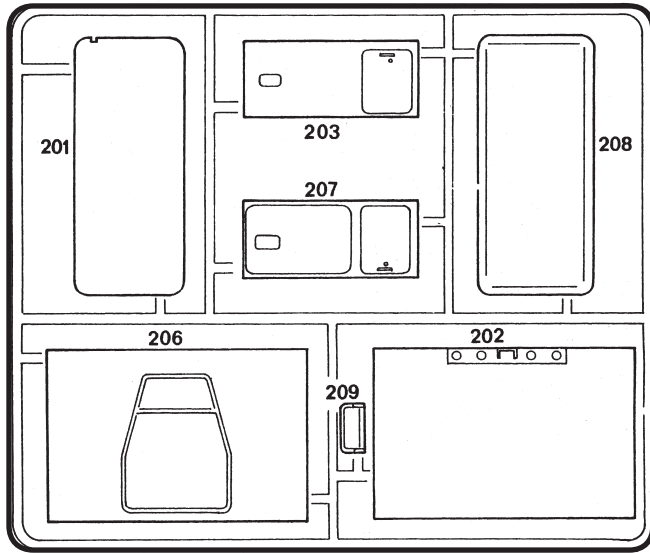


Nicht benötigte Teile  
 Parts not used  
 Pièces non utilisées  
 Niet benodigde onderdelen  
 Piezas no necesarias  
 Peças não utilizadas  
 Parti non usate  
 Teile används delar  
 Tarpeetomat osat  
 Ikke nødvendige dele  
 Deler som ikke er nødvendige  
 Неиспользуемые детали  
 Elementy niepotrzebne  
 μη χρησιμοποιεμενα εξαρτήματα  
 Gereksiz parçalar  
 Nepotrebné diely  
 fél nem használt alkatrészek  
 Nepotrební deli

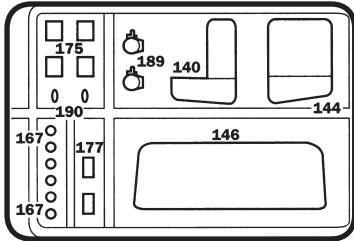
E



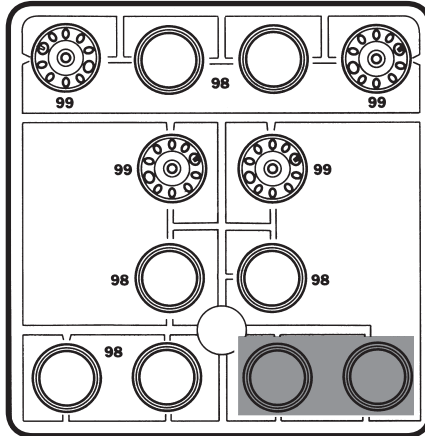
F



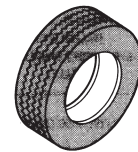
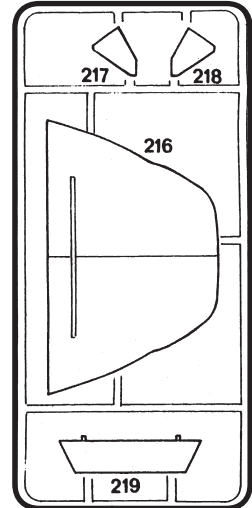
G




J



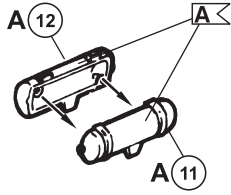
L



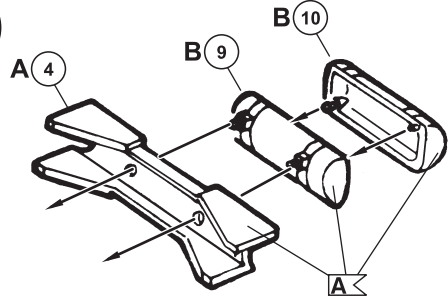
x10


 Nicht benötigte Teile  
 Parts not used  
 Pièces non utilisées  
 Niet benodigde onderdelen  
 Peças no necessárias  
 Peças não utilizadas  
 Parti non usate  
 Inte anivanda delar  
 Tarpeettornat osat  
 Ikke nødvendige dele  
 Deleer som ikke er nødvendige  
 Неиспользуемые детали  
 Elementy niepotrzebne  
 μη χρησιμοποιούμενα εξαρτήματα  
 Gereksiz parçalar  
 Nepotřebné díly  
 fel nem használt alkatrészek  
 Nepotrební deli

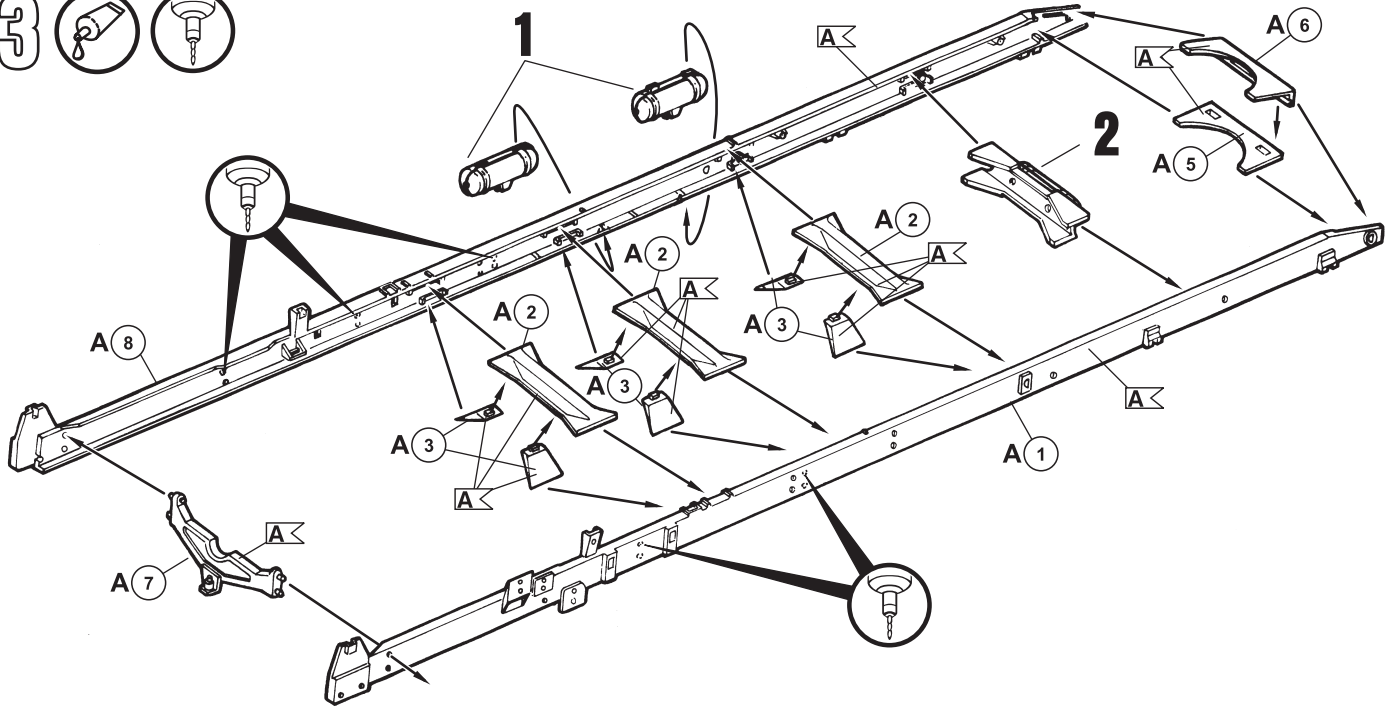
1  **2x**



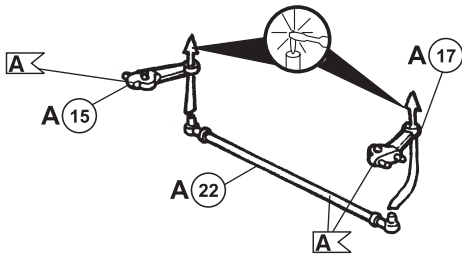
2 



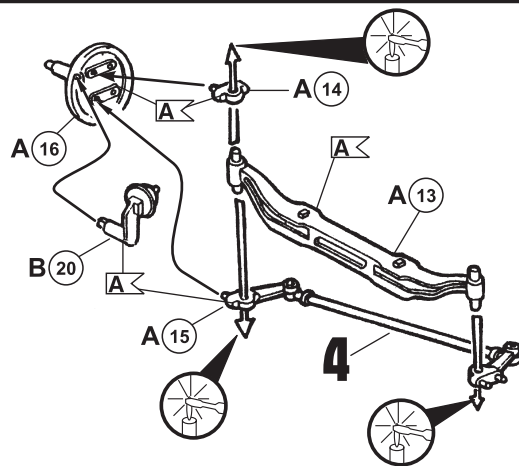
3  



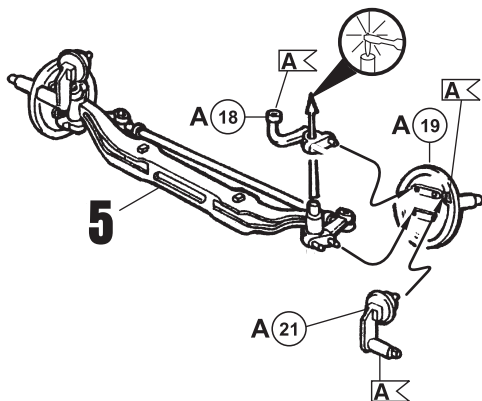
4 



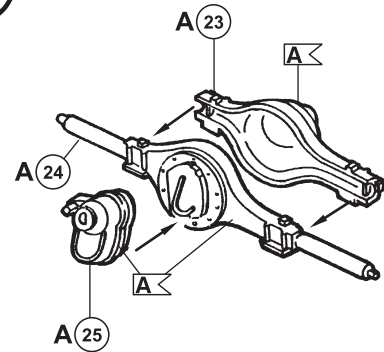
5 

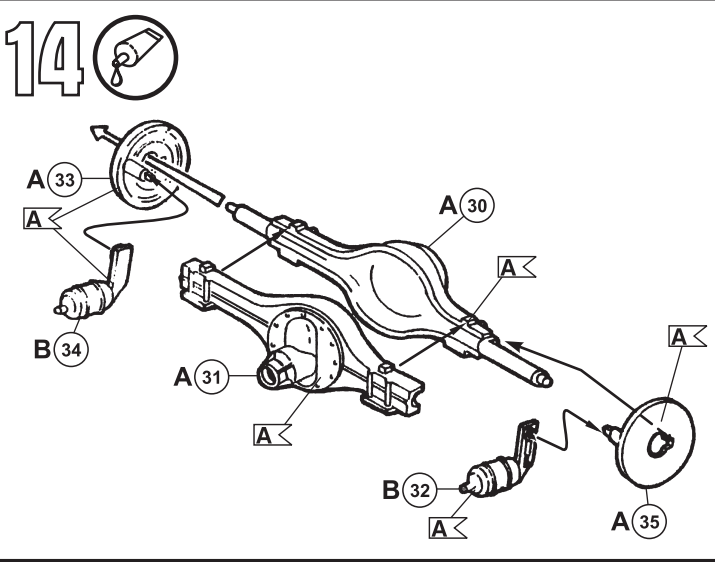
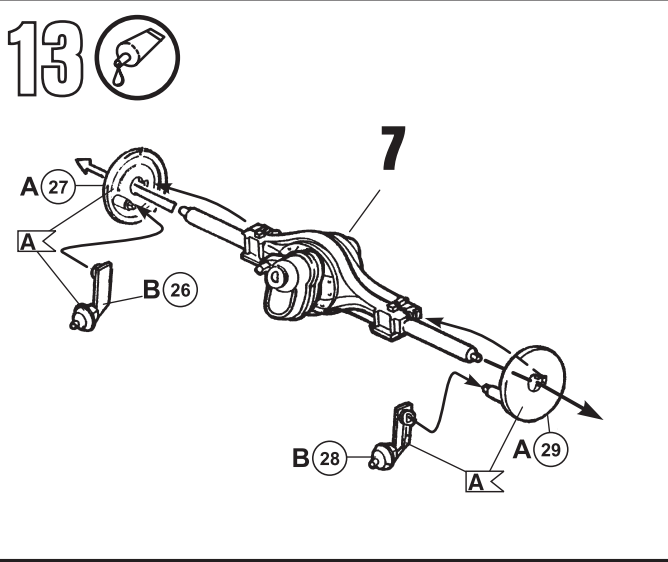
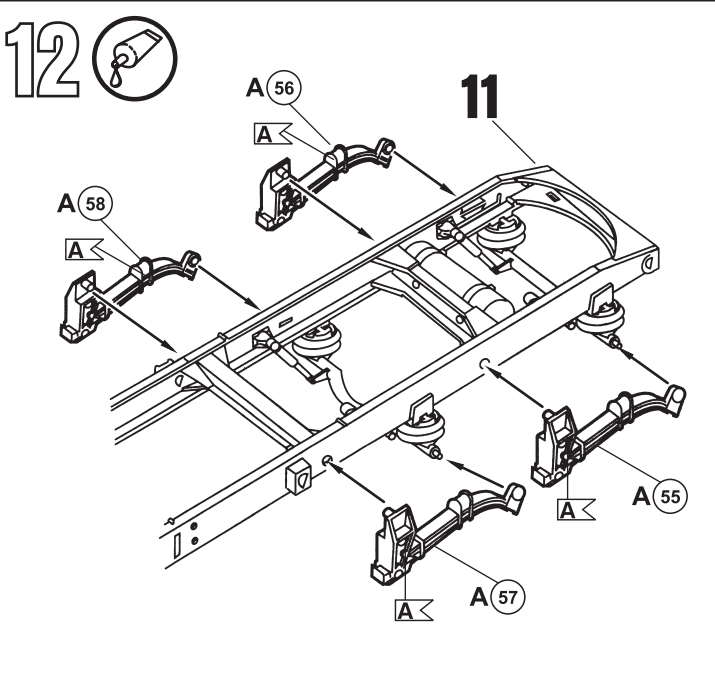
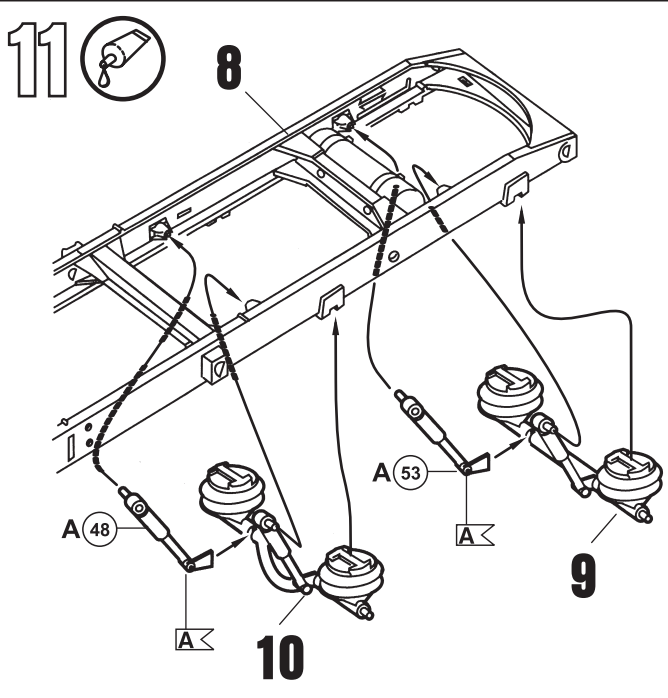
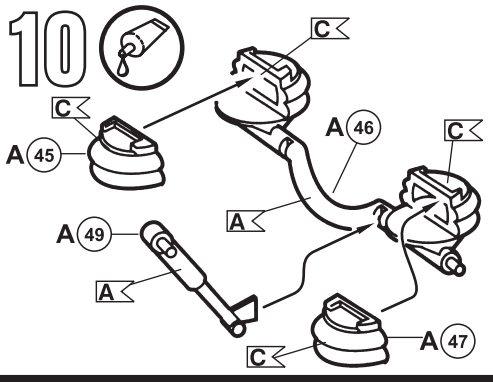
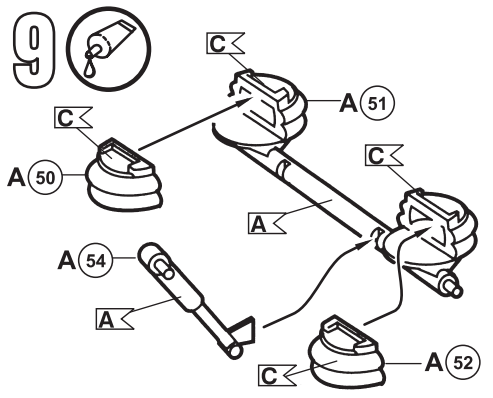
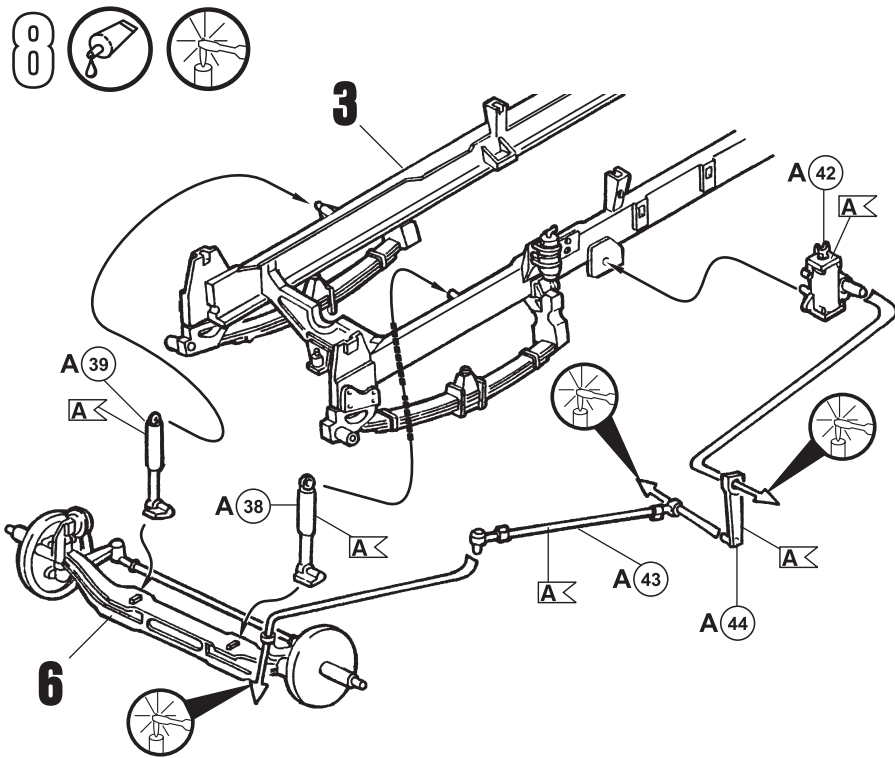


6  



7 





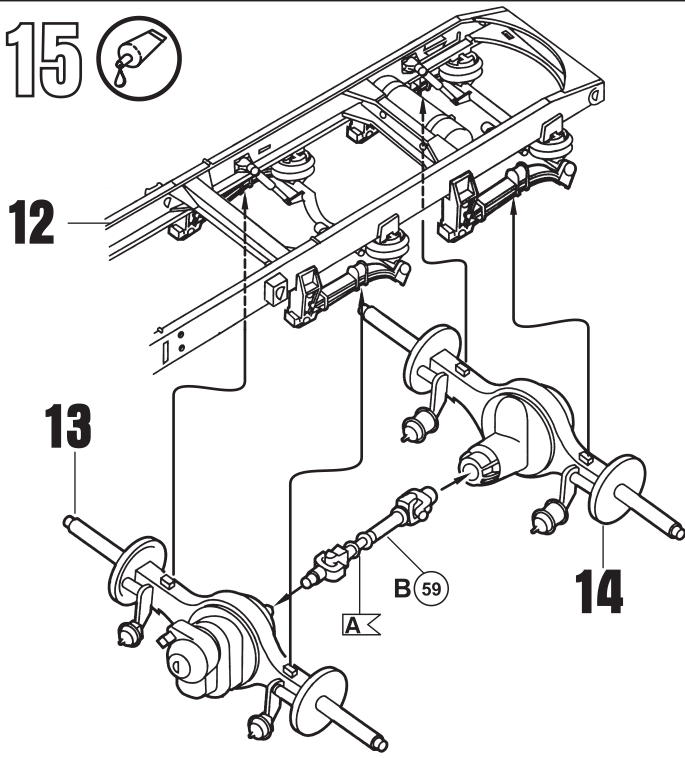


15

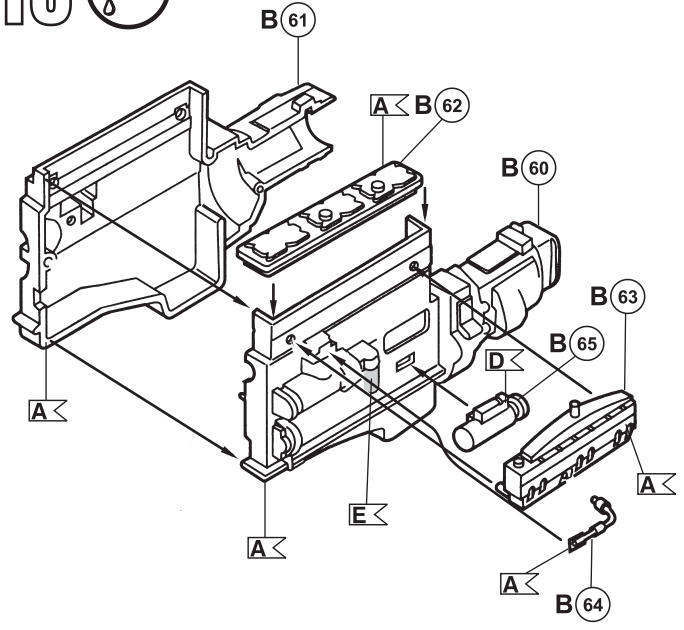
12

13

14

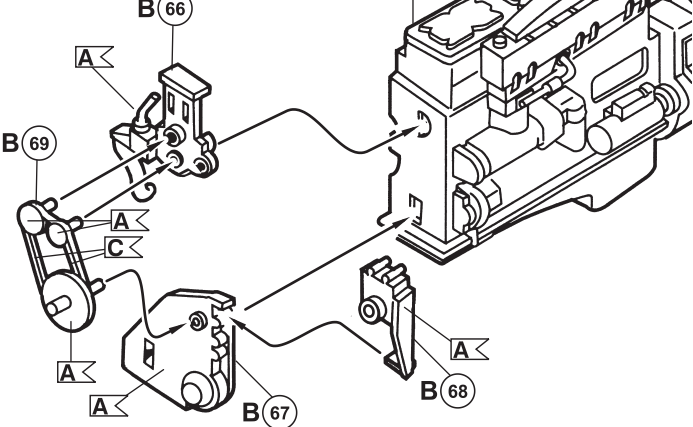


16



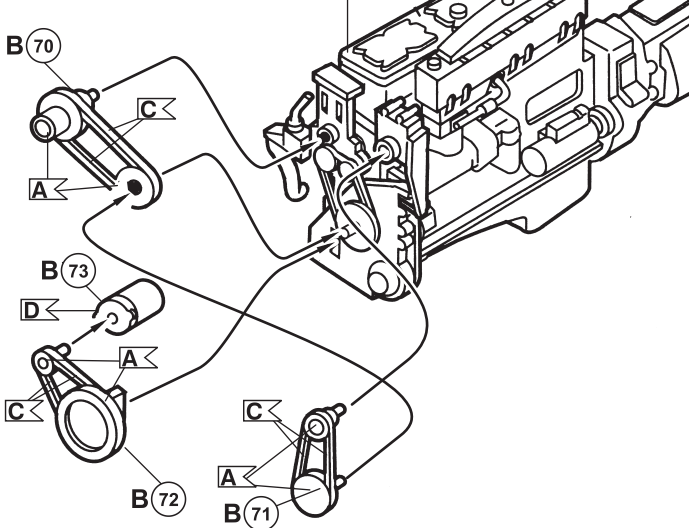
17

16



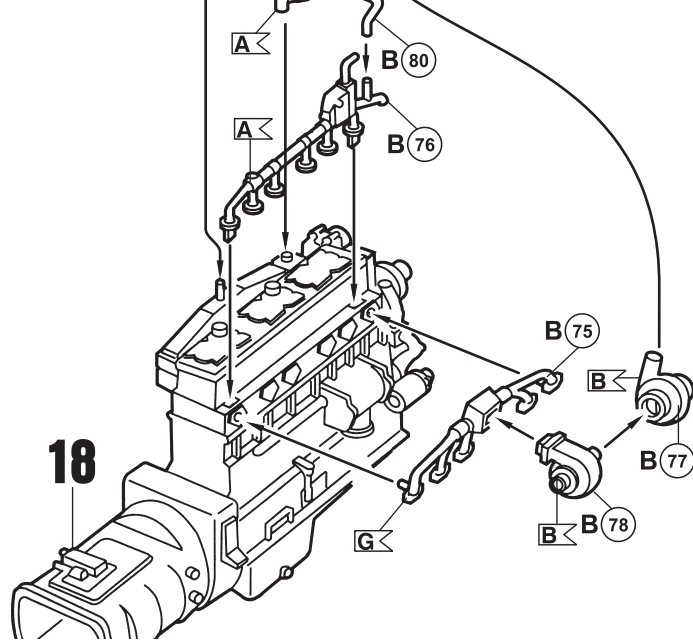
18

17



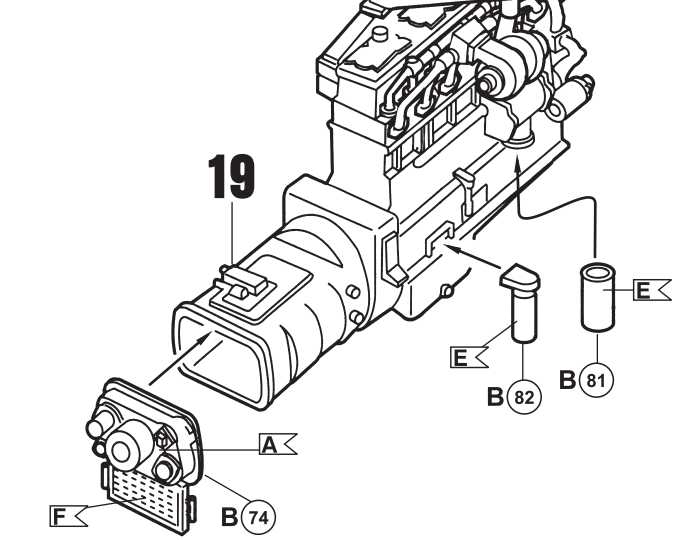
19

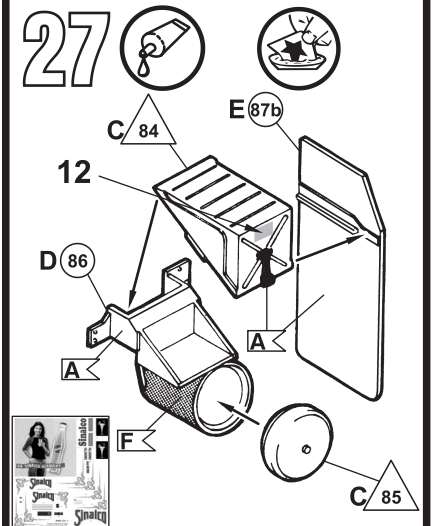
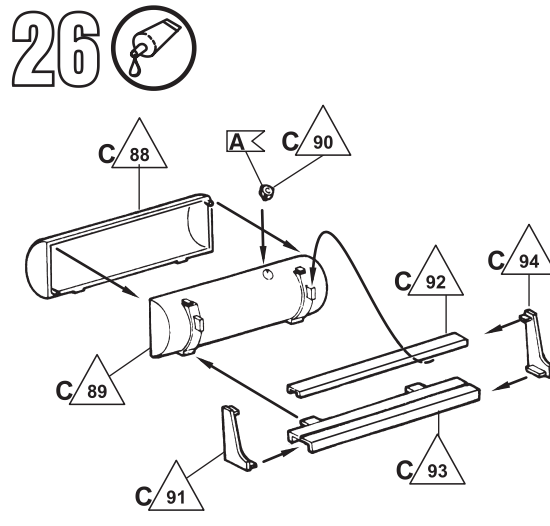
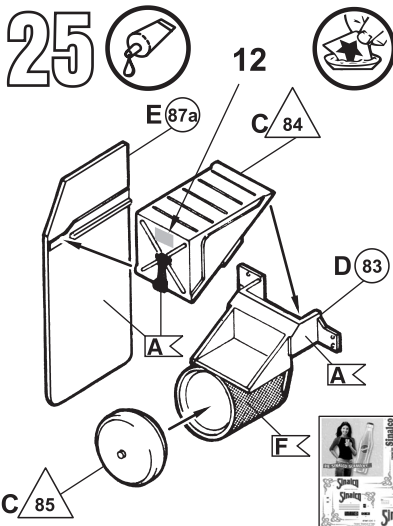
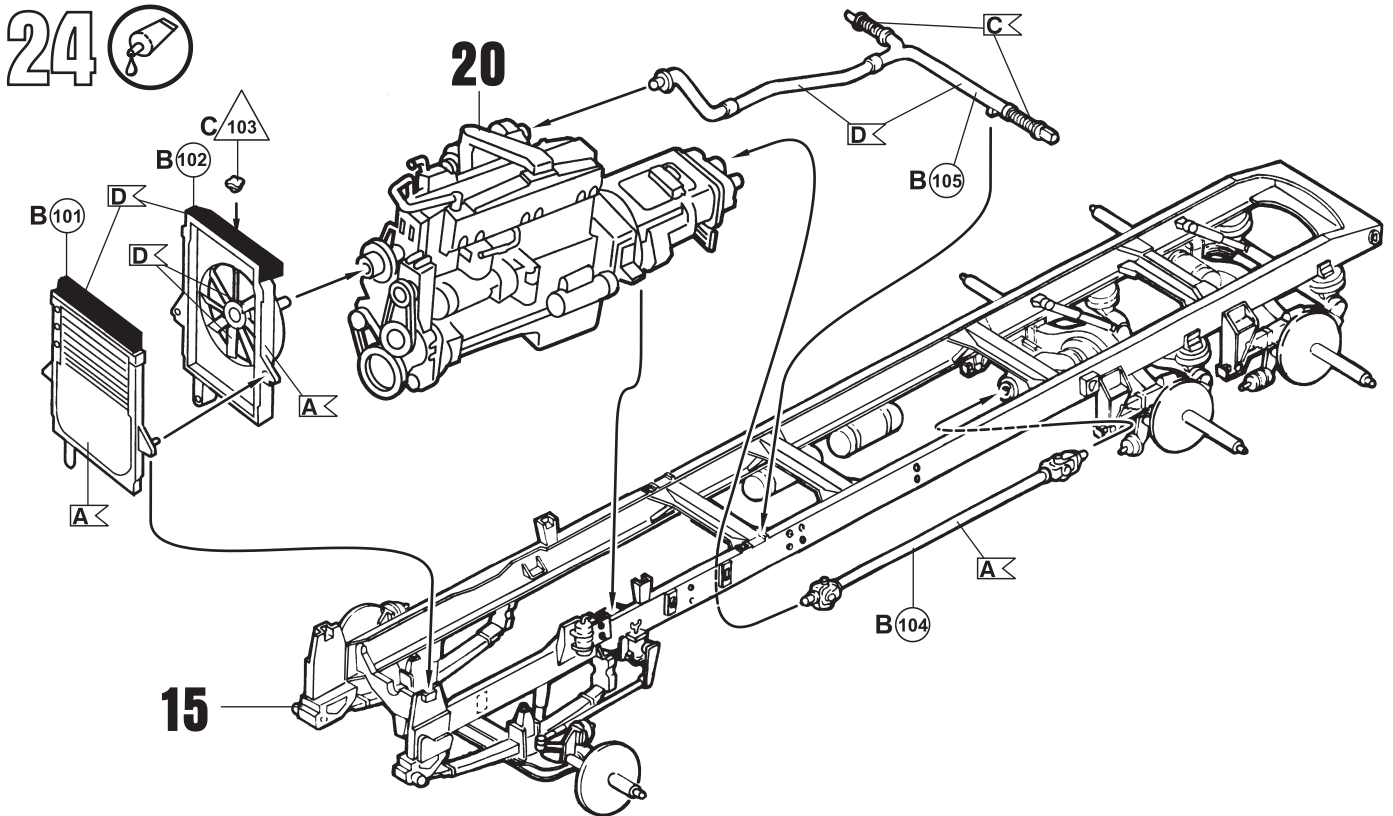
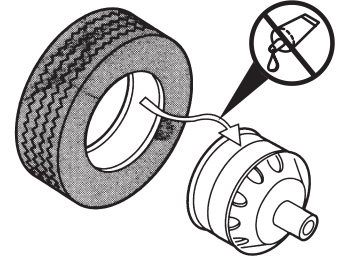
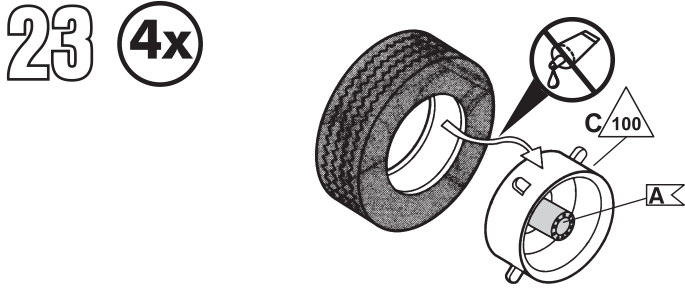
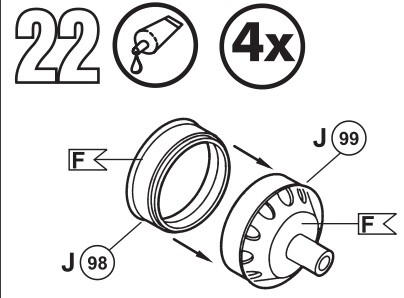
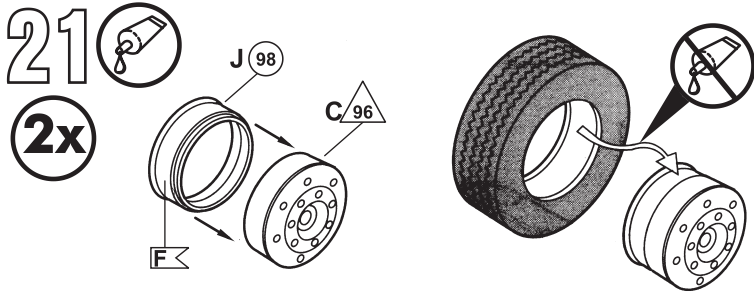
18



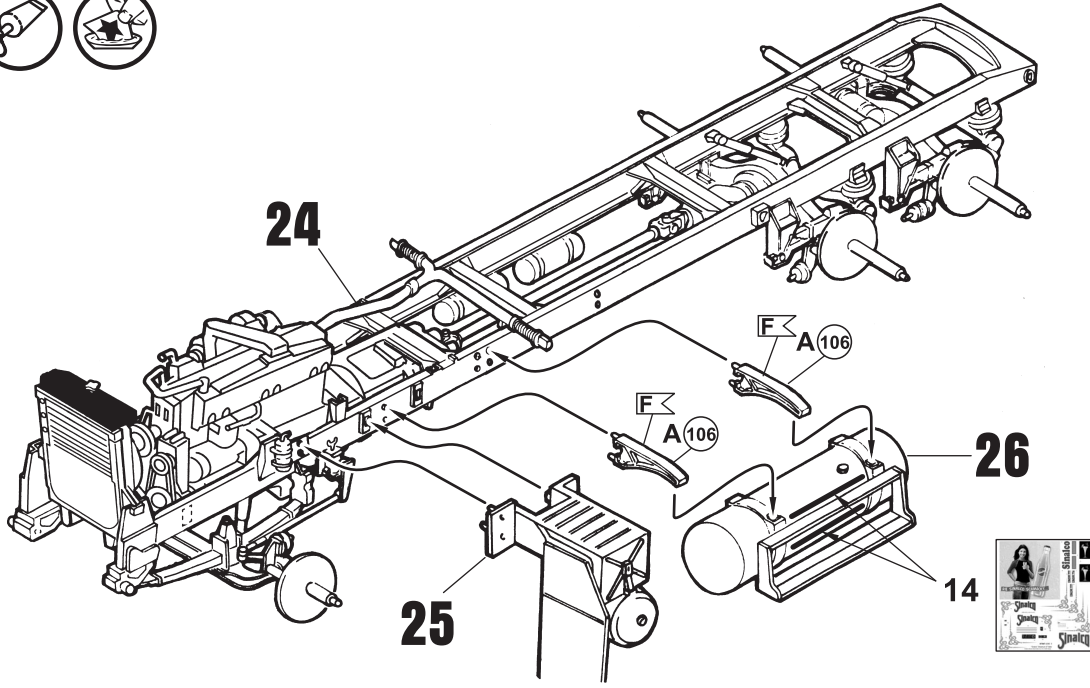
20

19

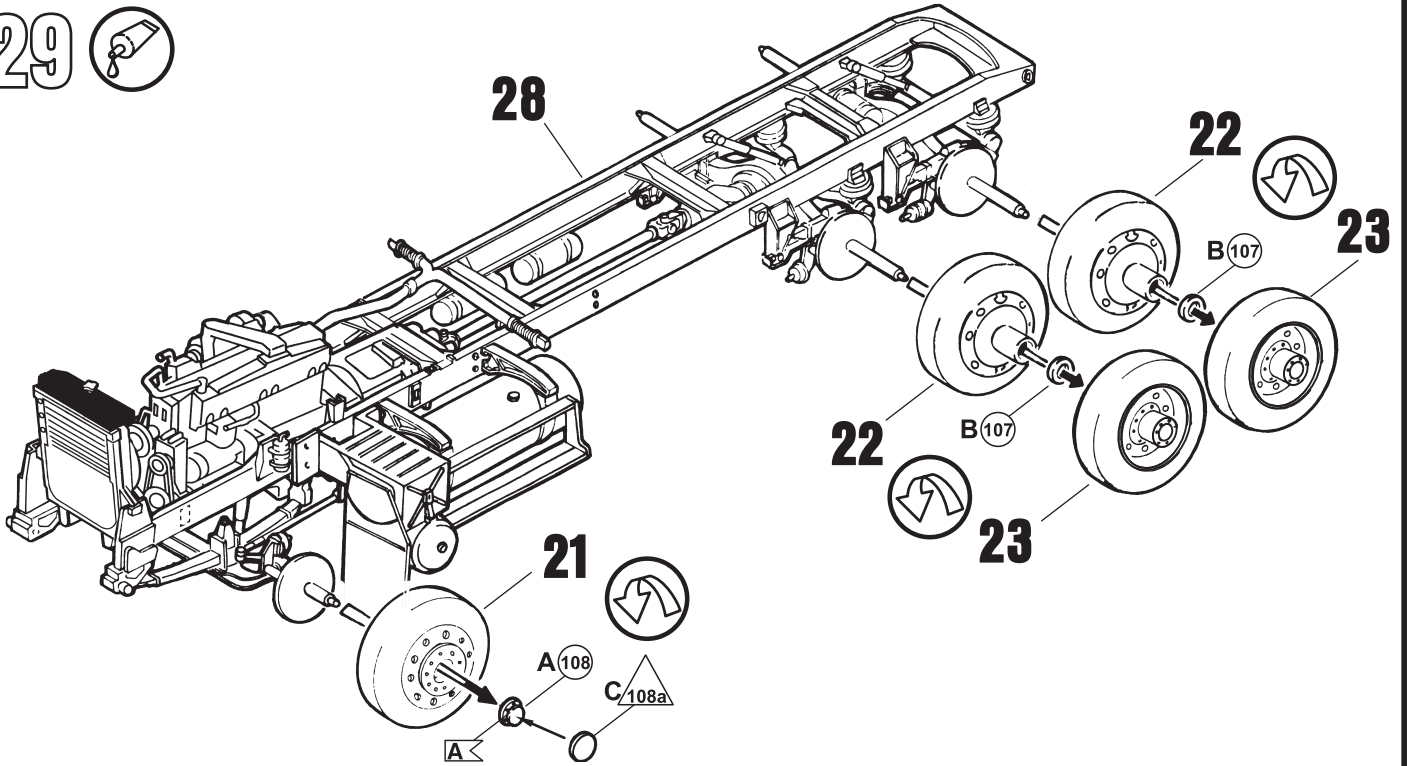




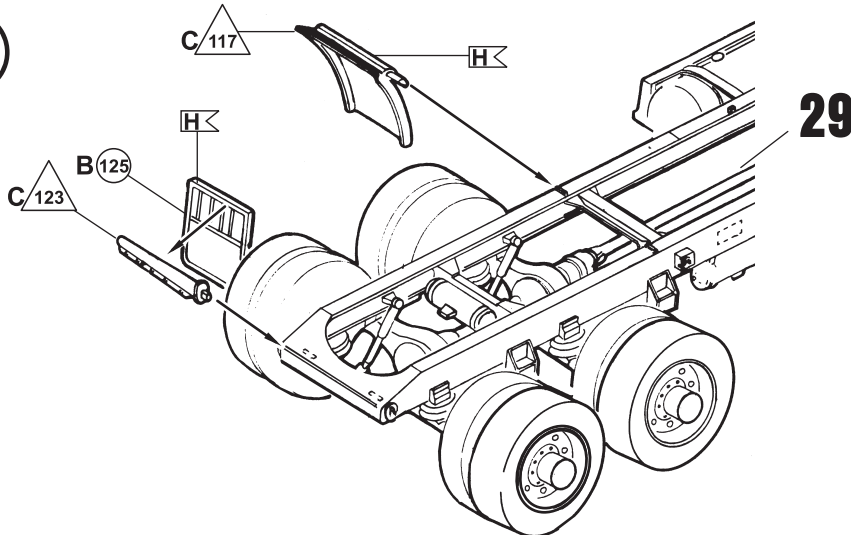
28  



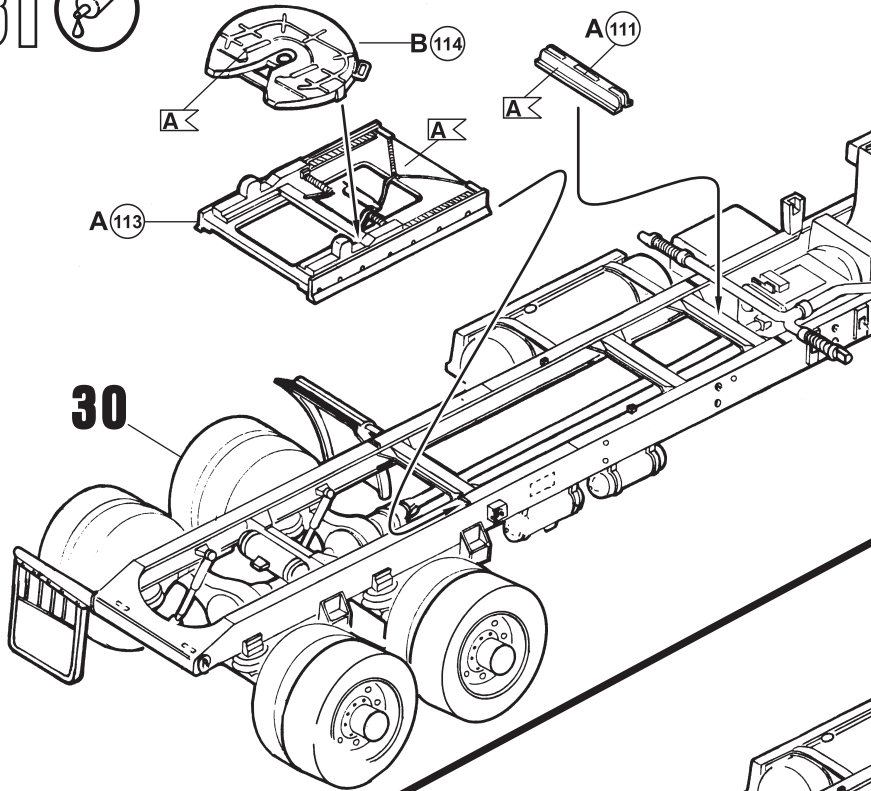
29 



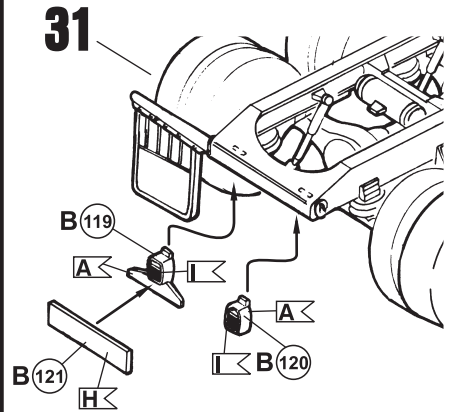
30 



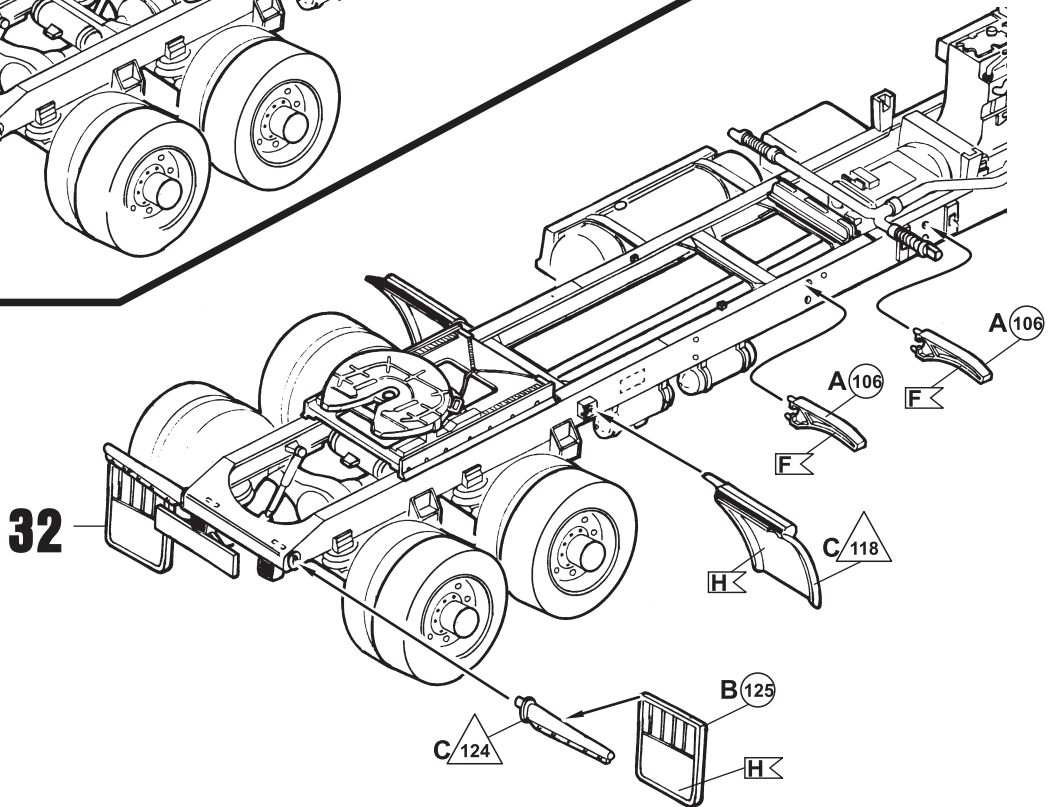
31



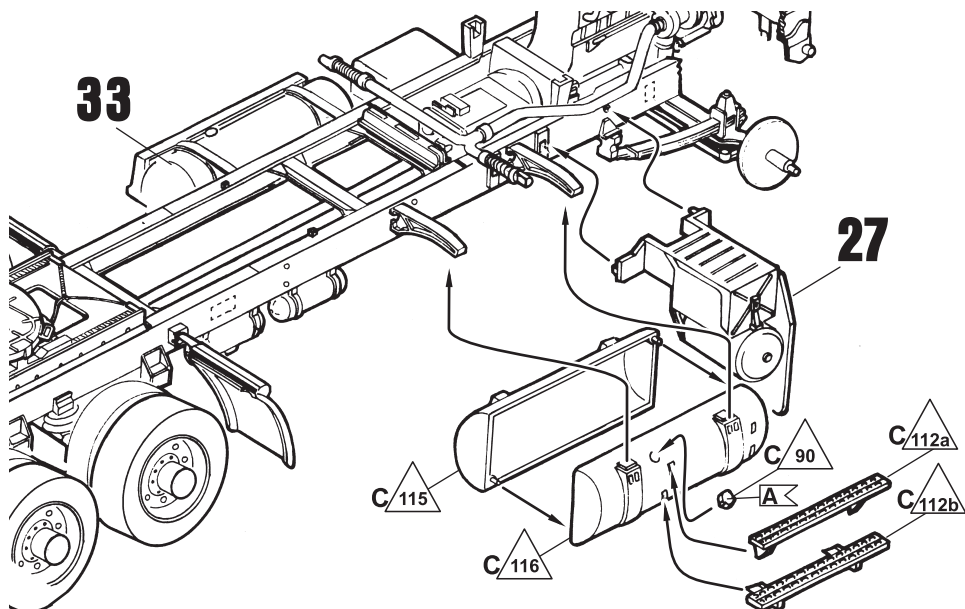
32



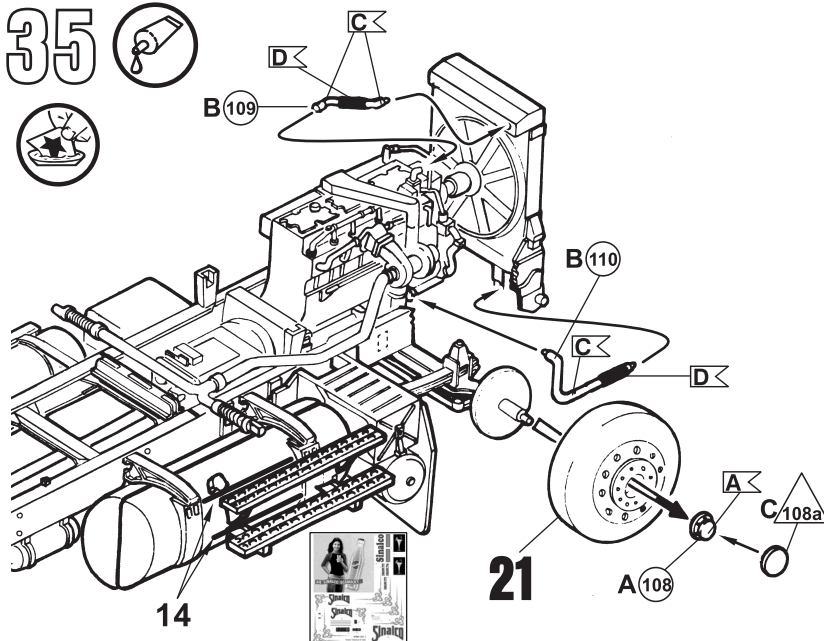
33



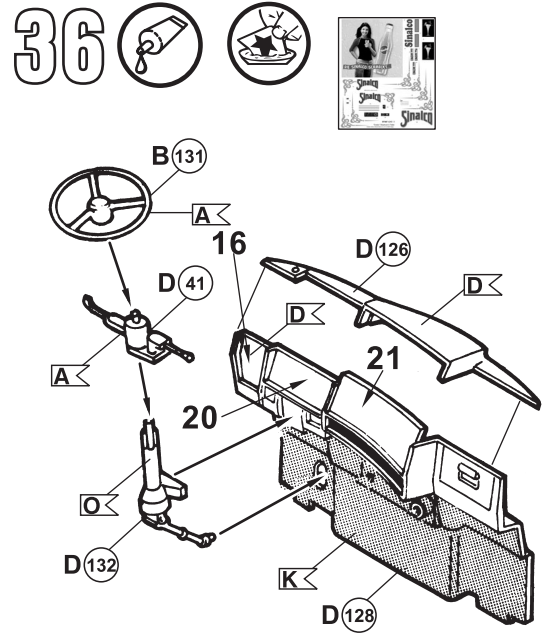
34



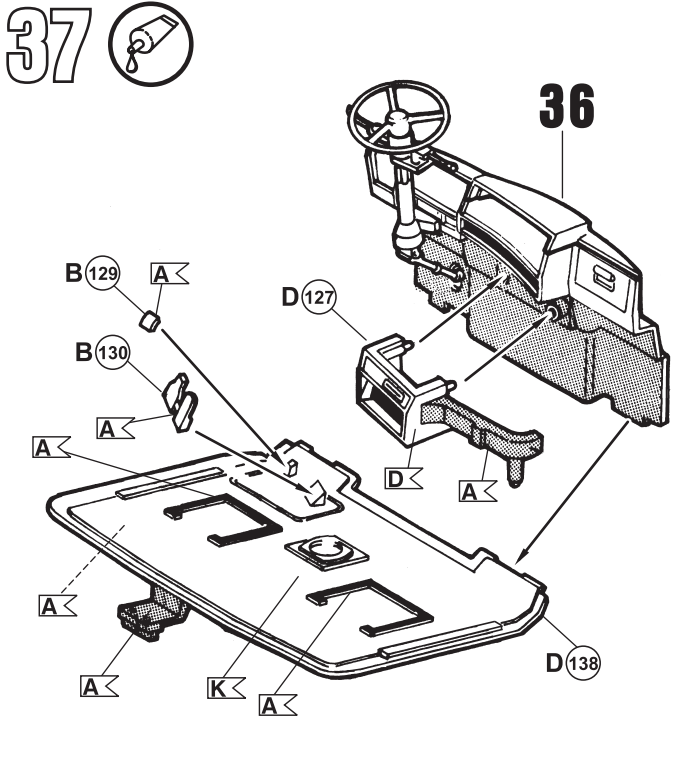
35



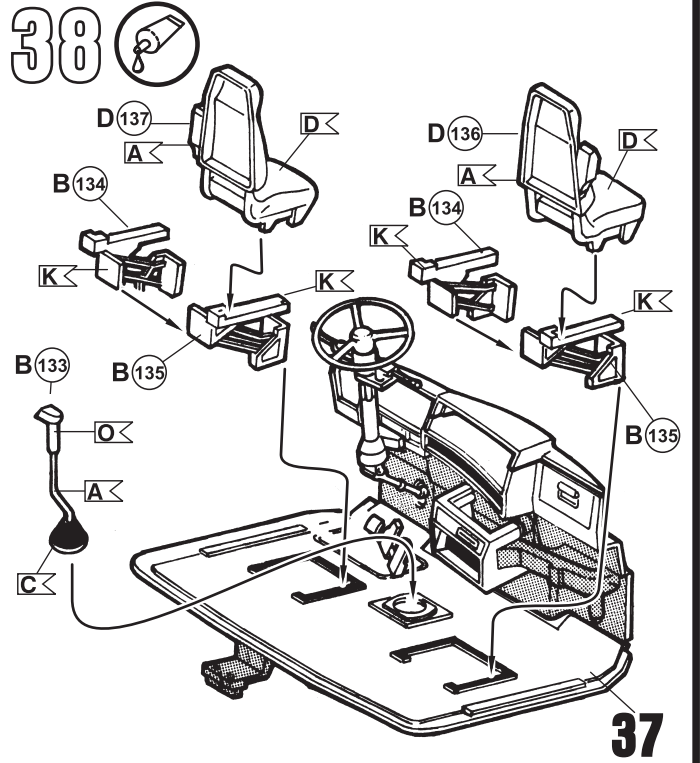
36



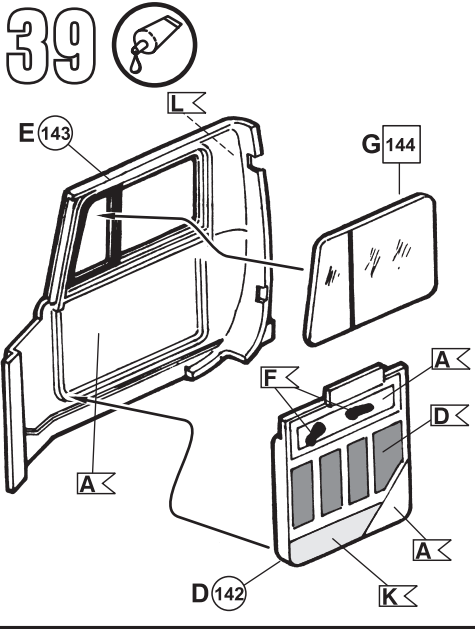
37



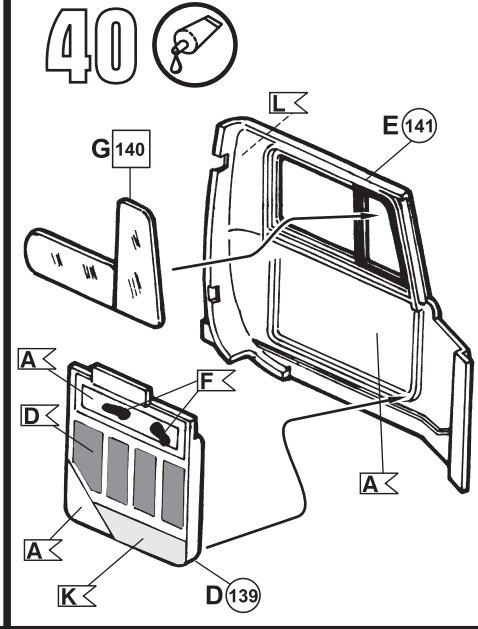
38



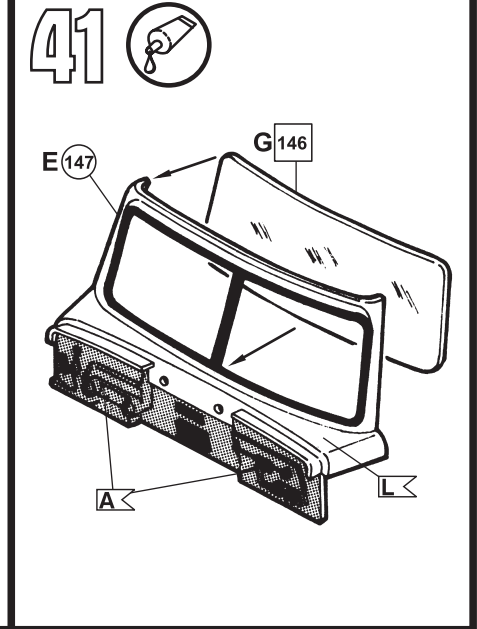
39



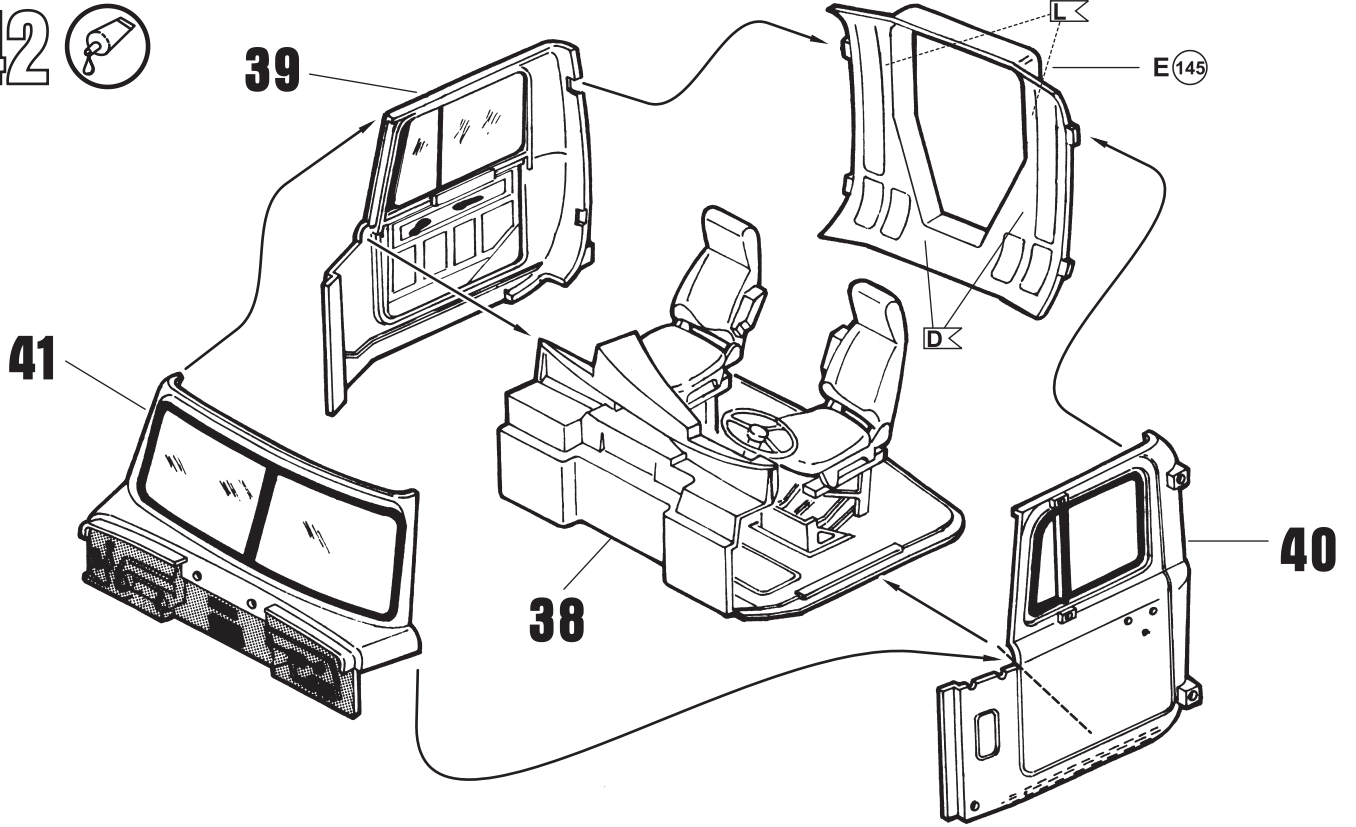
40



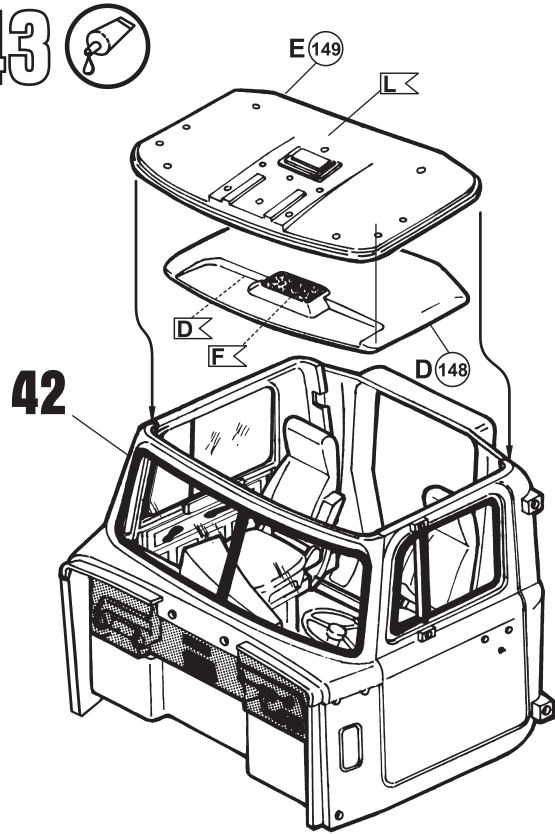
41



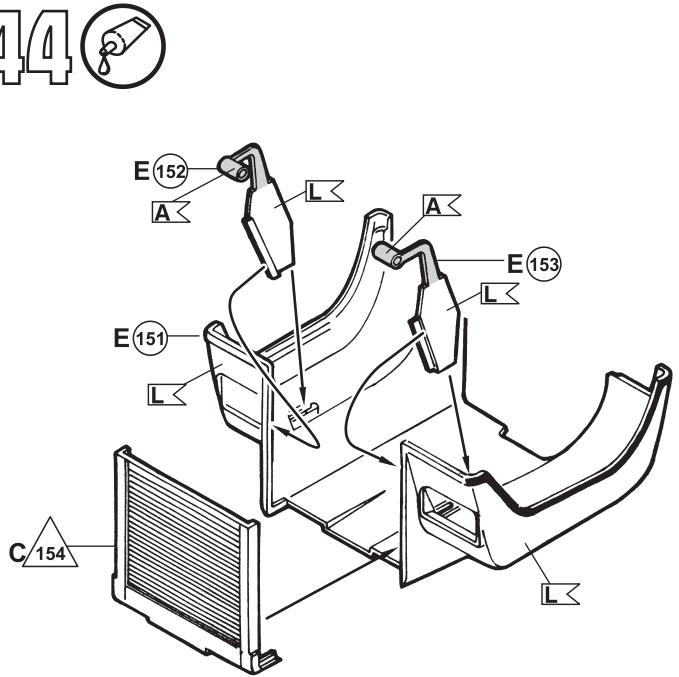
42 



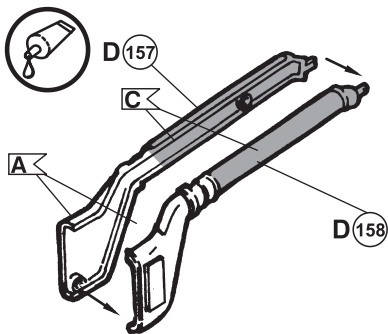
43 



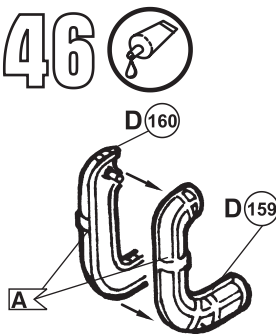
44 



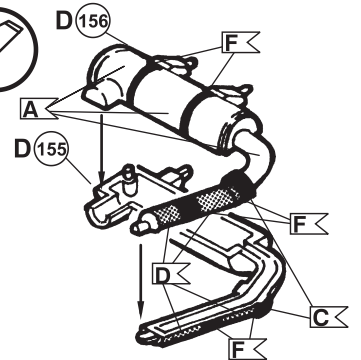
45 



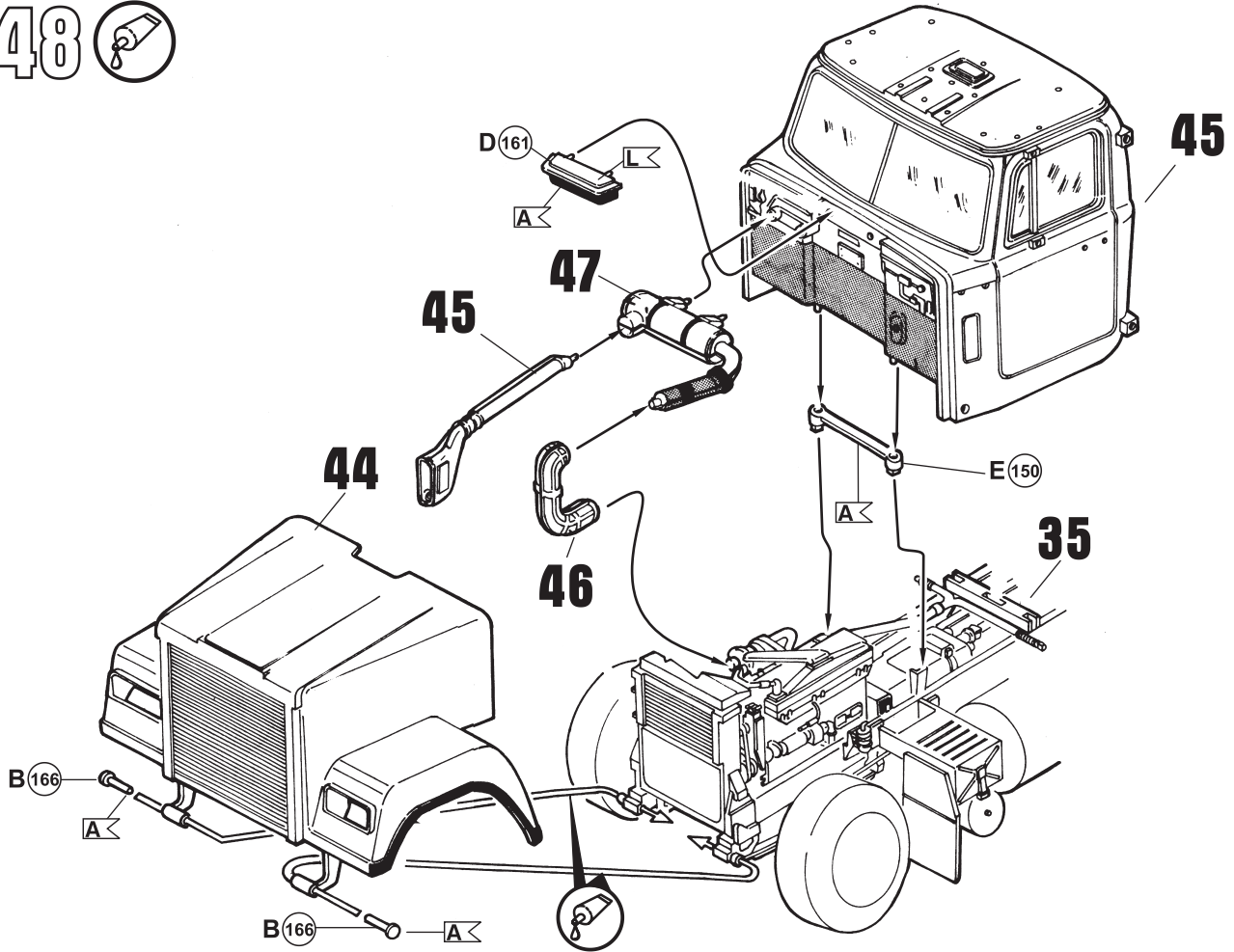
46 



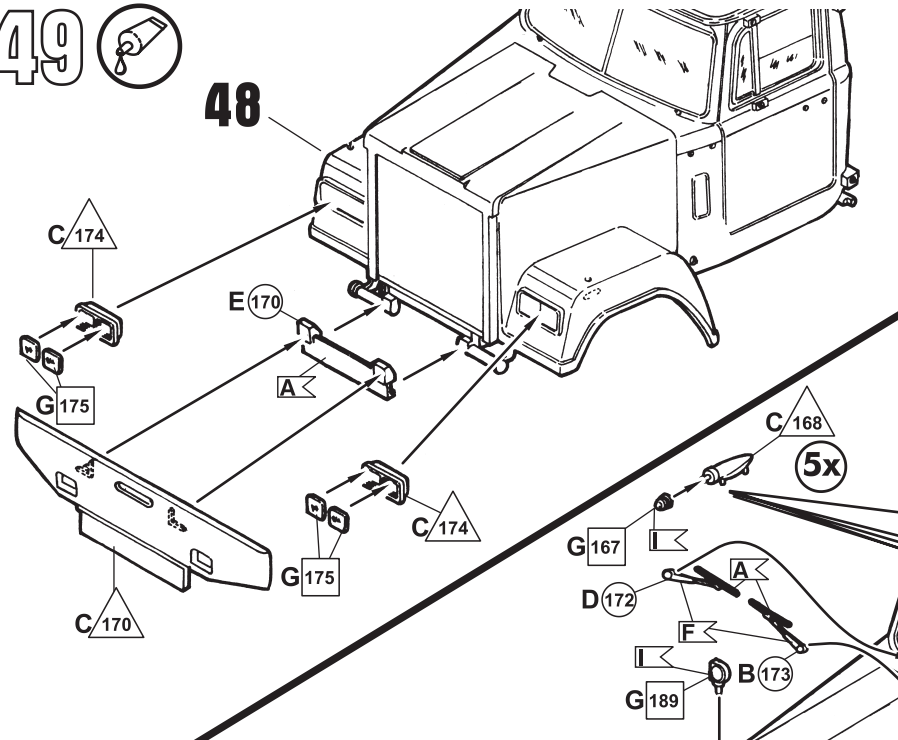
47 



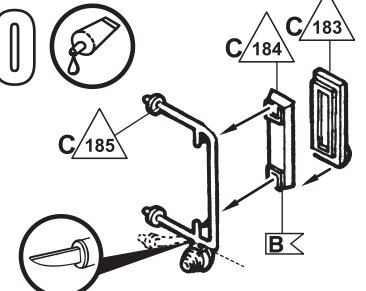
# 48



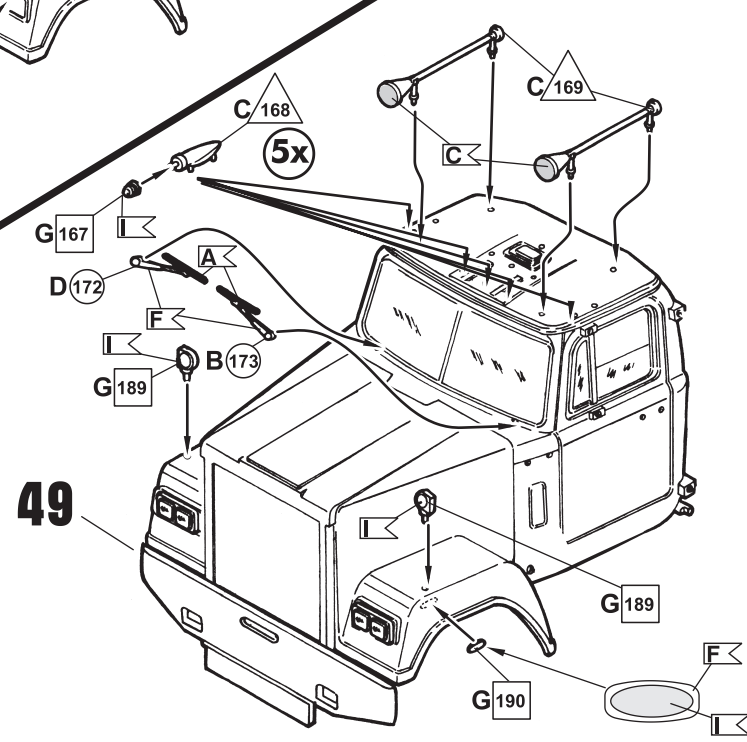
# 49



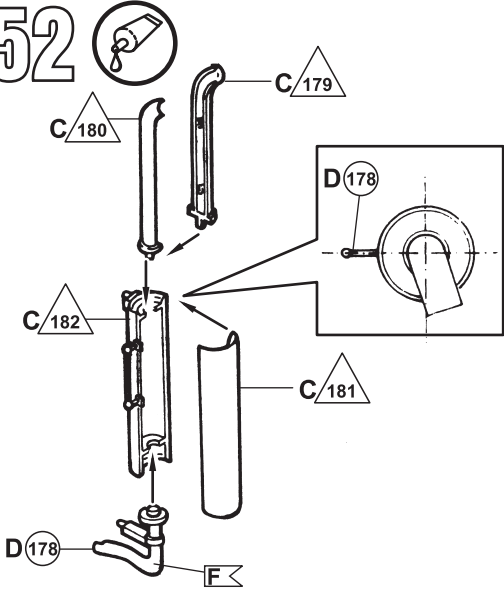
# 50



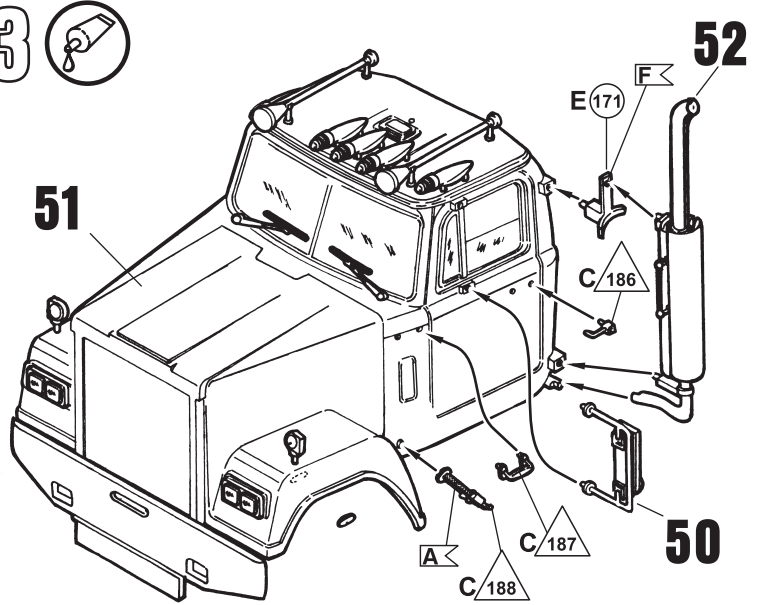
# 51



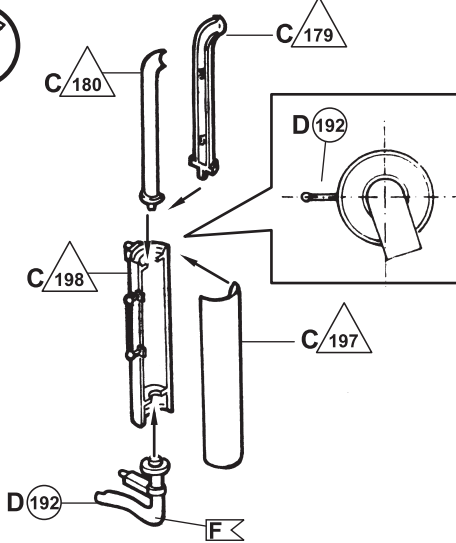
52



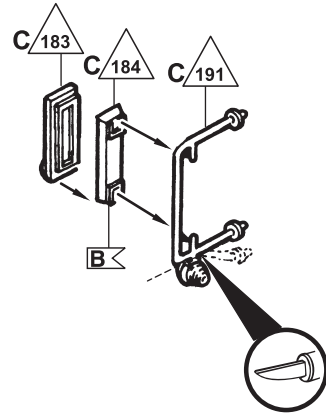
53



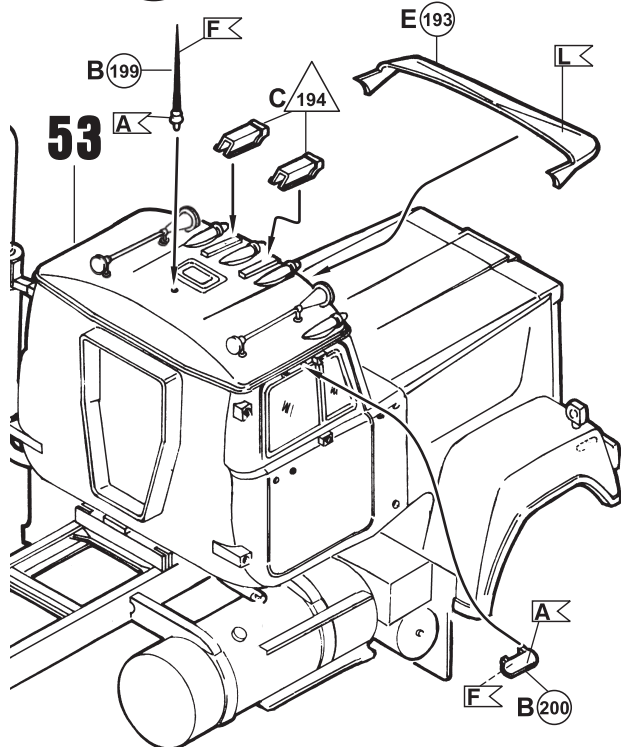
54



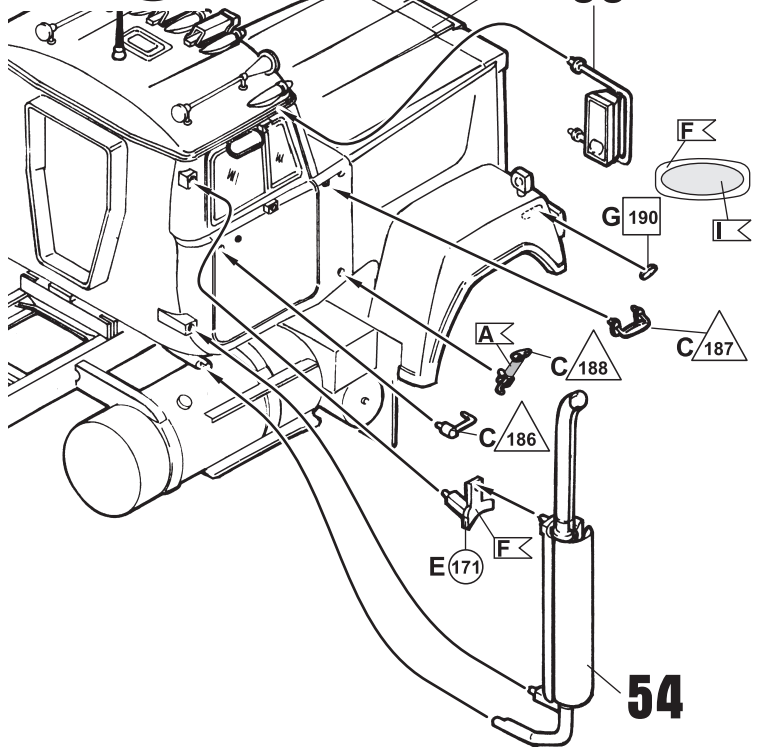
55



56

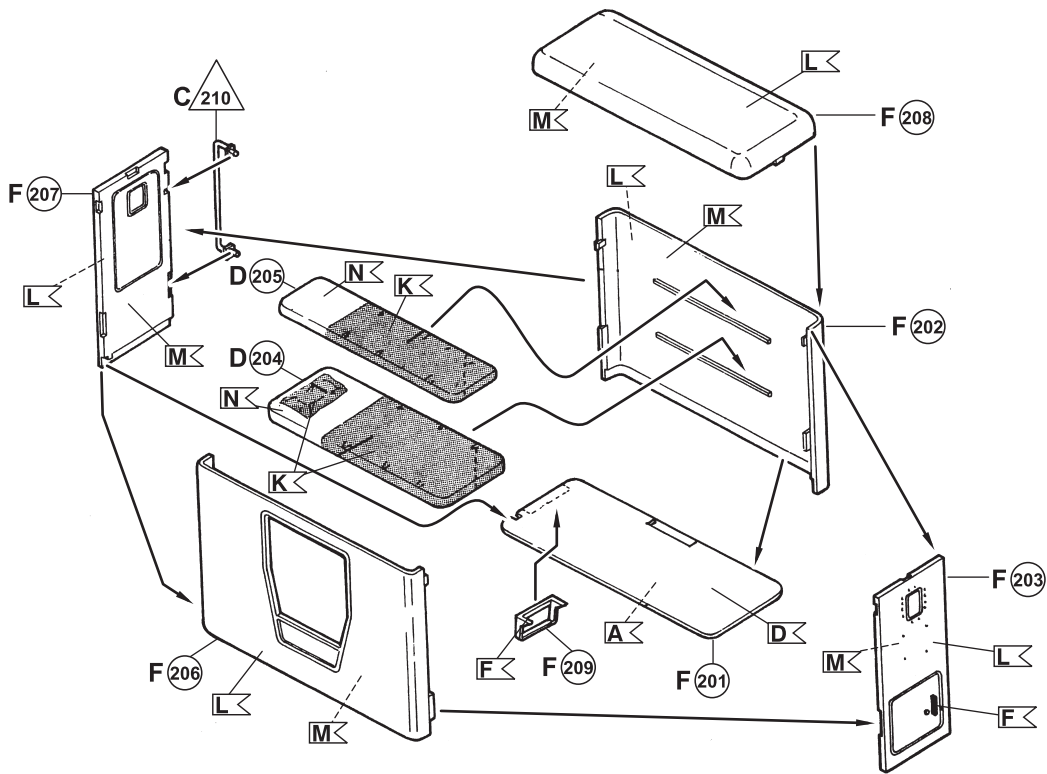


57

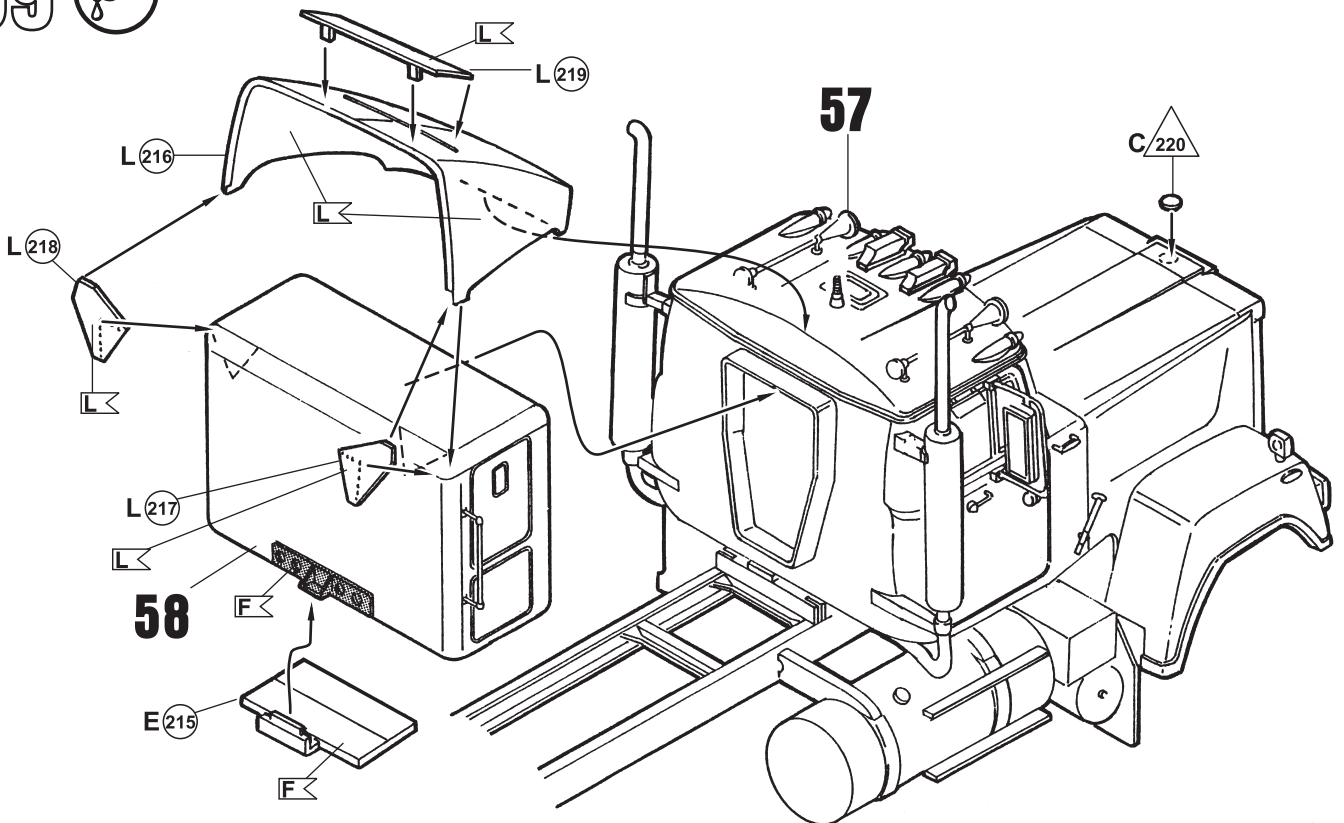




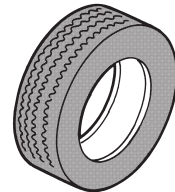
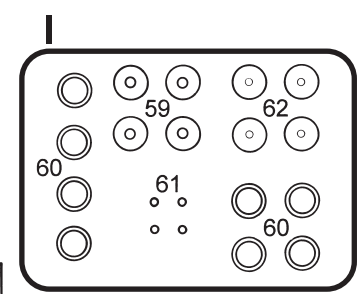
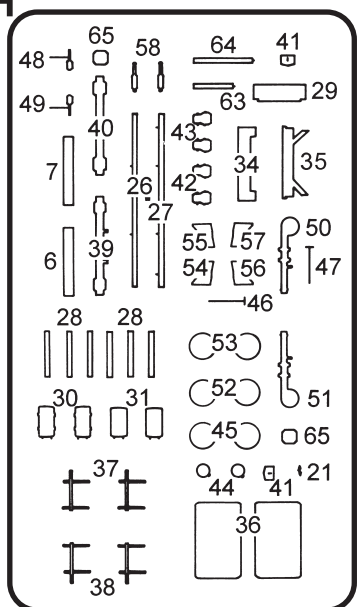
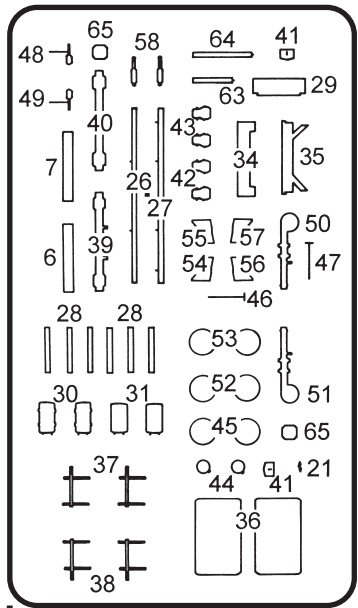
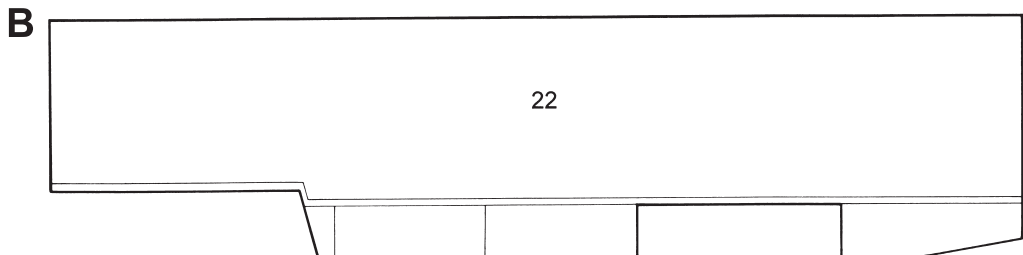
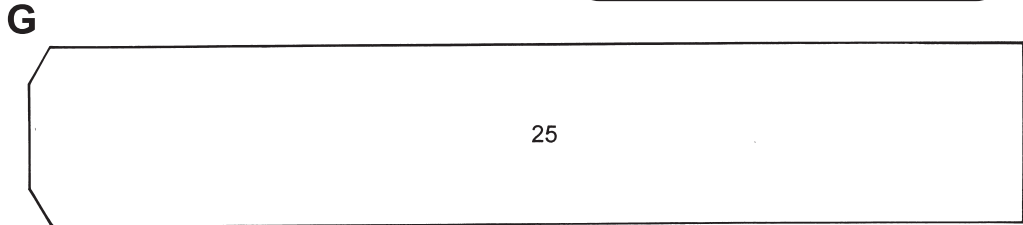
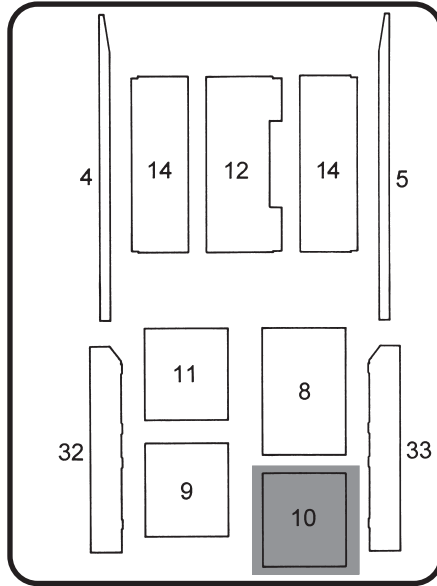
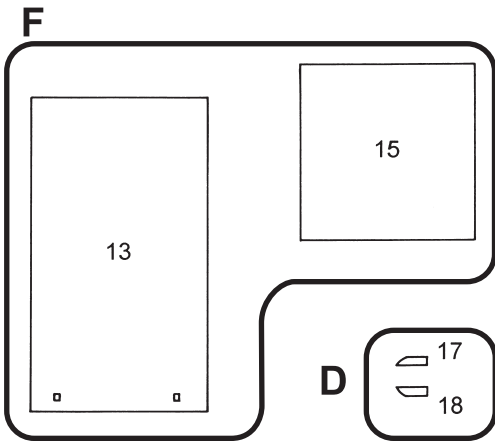
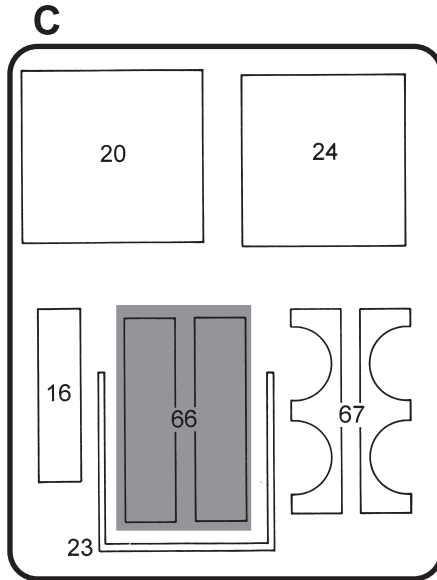
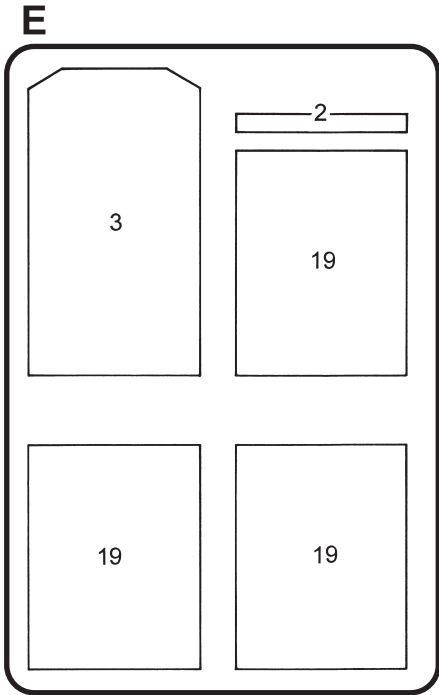
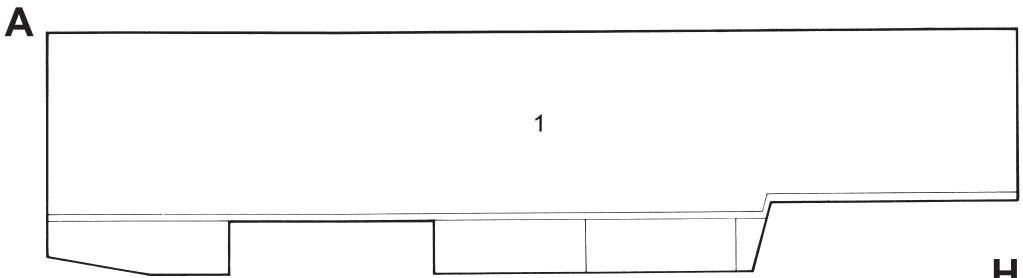
# 58



# 59



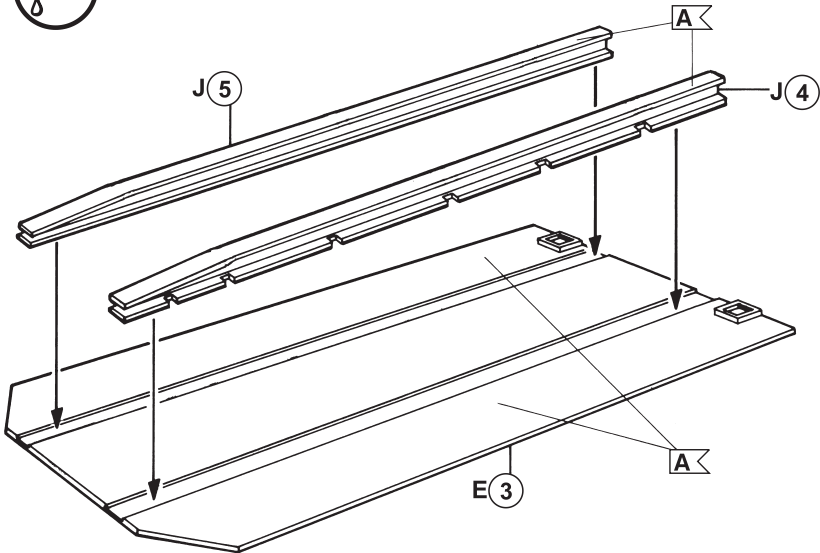
# 2. Trailer



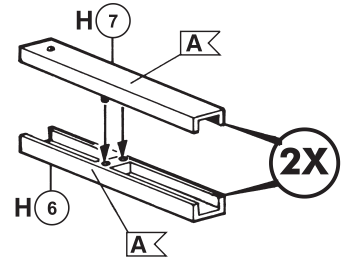
**8x**

Nicht benötigte Teile  
 Parts not used  
 Pièces non utilisées  
 Niet benodigde onderdelen  
 Peças no necessarias  
 Peças não utilizadas  
 Parti non usate  
 Inte använda delar  
 Tarpeetomat osat  
 Ikke nødvendige dele  
 Deler som ikke er nødvendige  
 Неиспользуемые детали  
 Elementy niepotrzebne  
 μη χρειαζόμενα εξαρτήματα  
 Gereksiz parçalar  
 Nepotřebné díly  
 feli nem használt alkatrészek  
 Nepotrebni deli

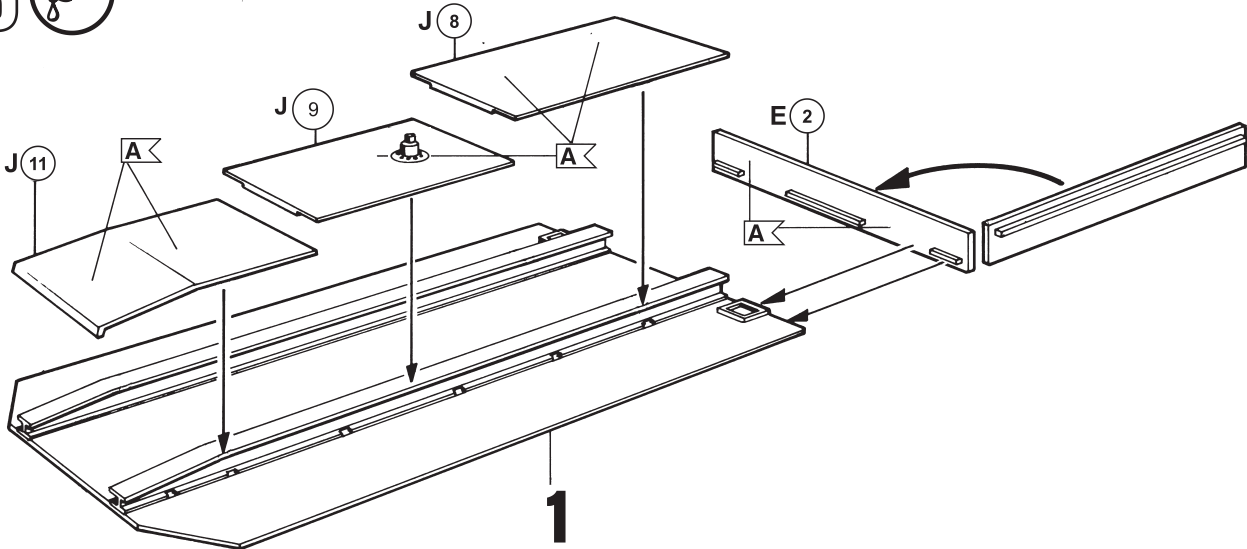
1 



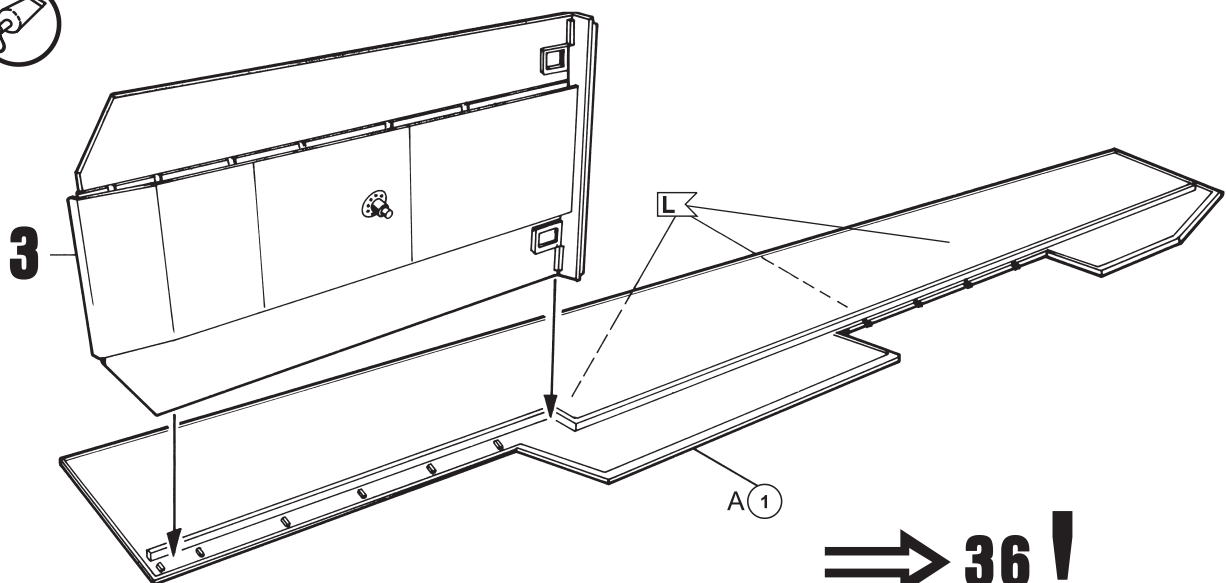
2 



3 

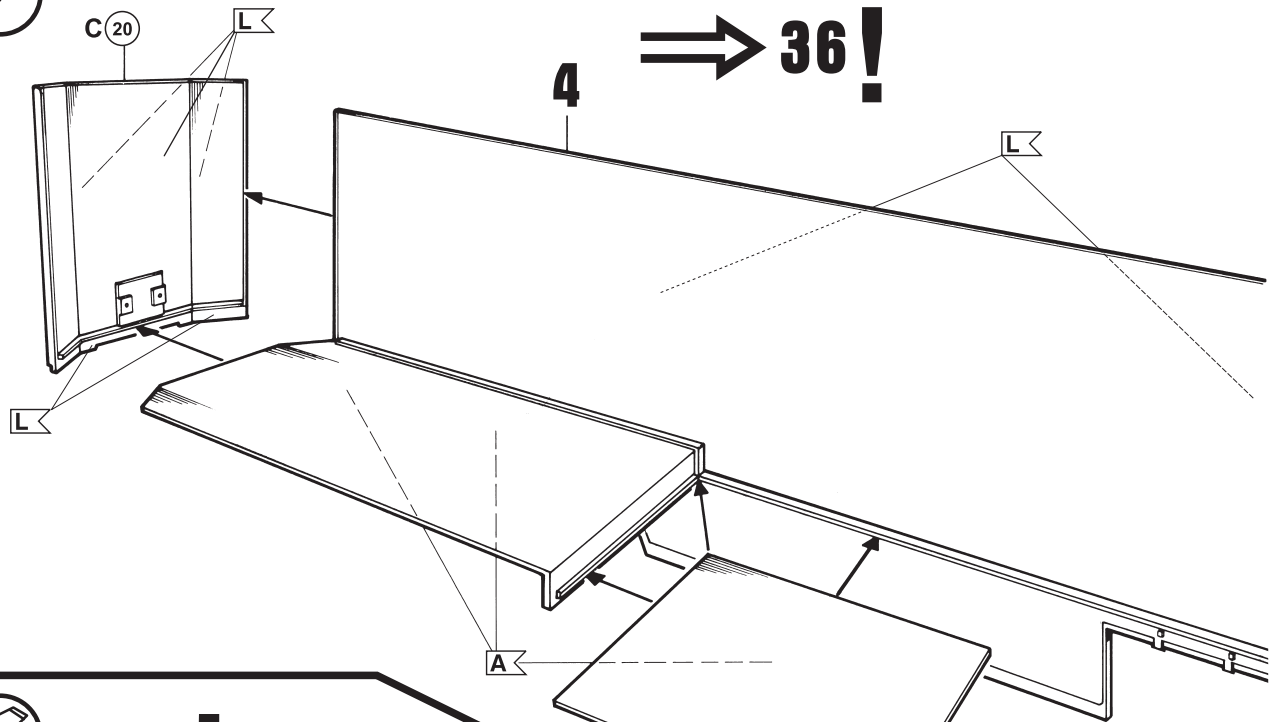


4 

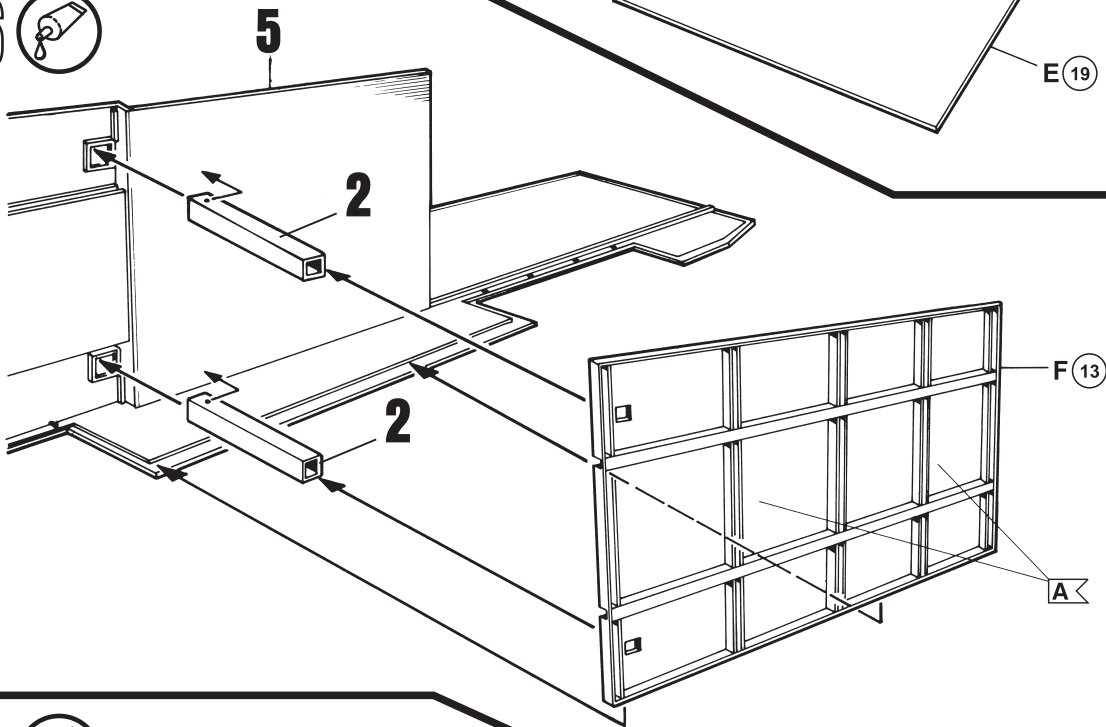


⇒ 36 !

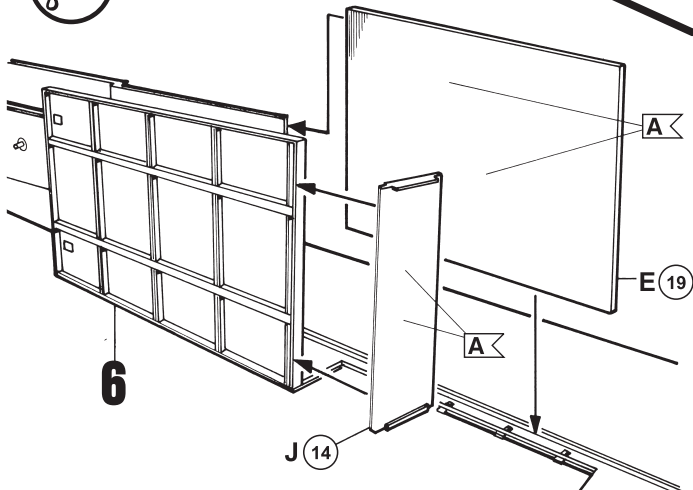
5 




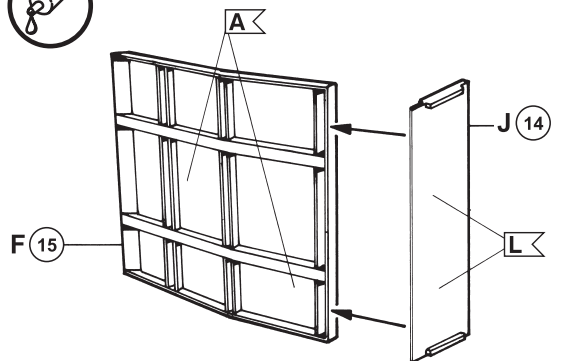
6 



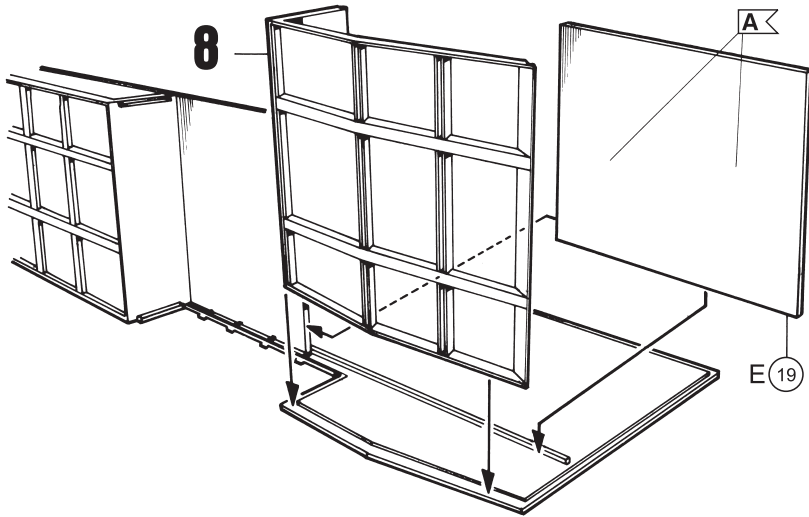
7 



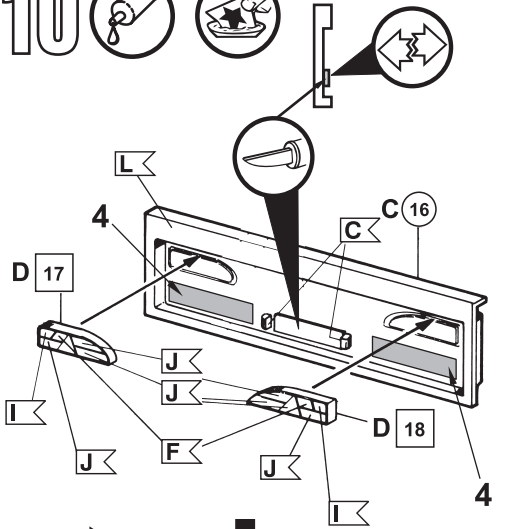
8 



9 

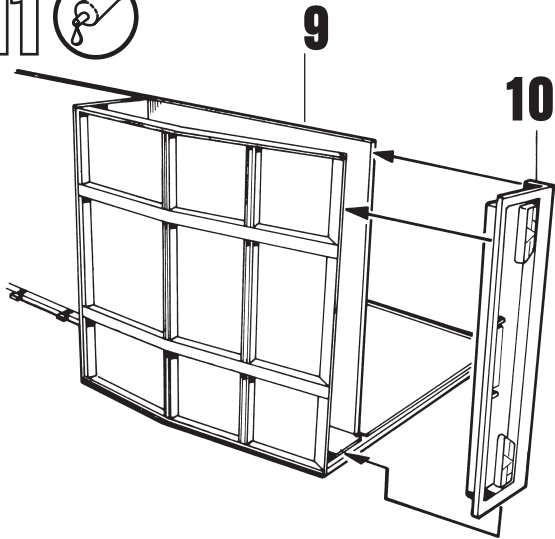


10  



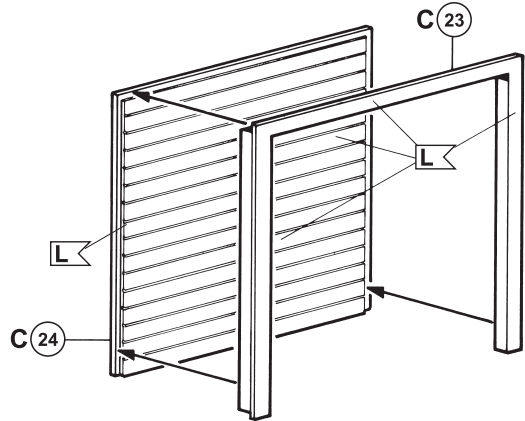
⇒ 36!

11 



12 

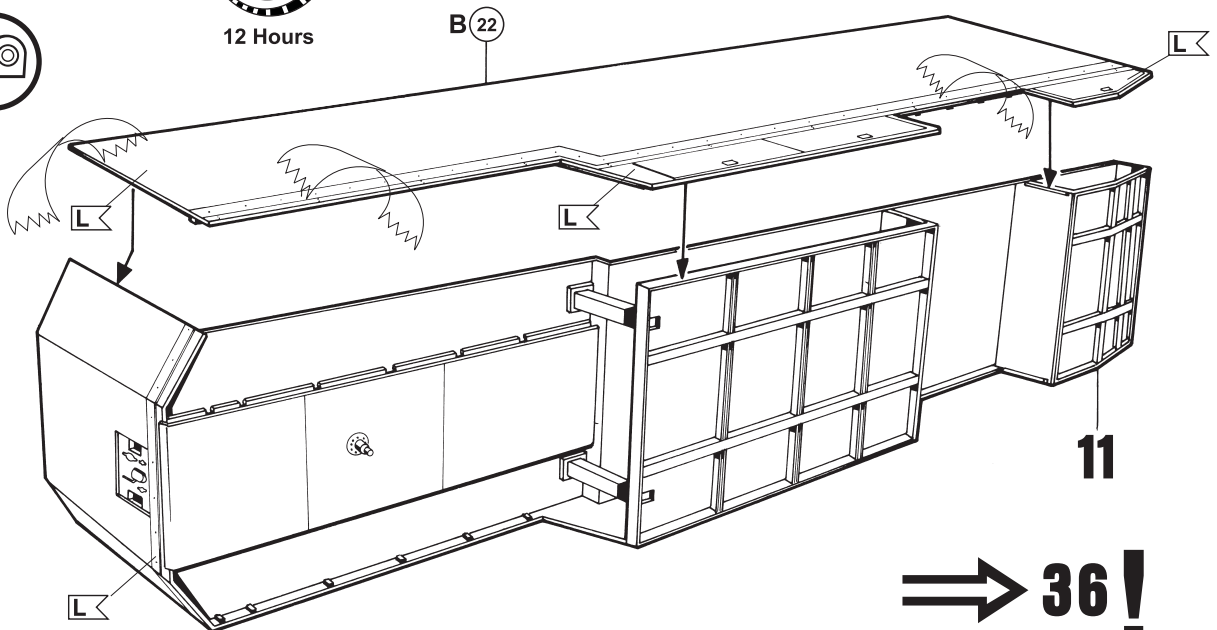
⇒ 36!



13 



12 Hours

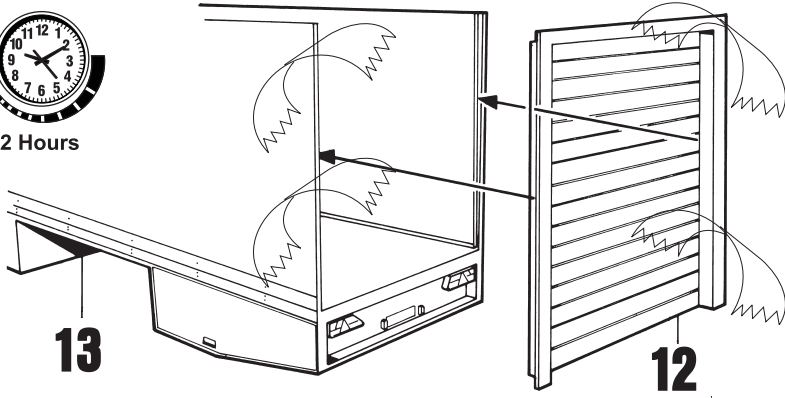


⇒ 36!

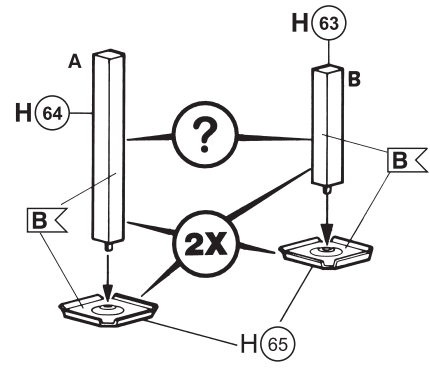
14 



12 Hours



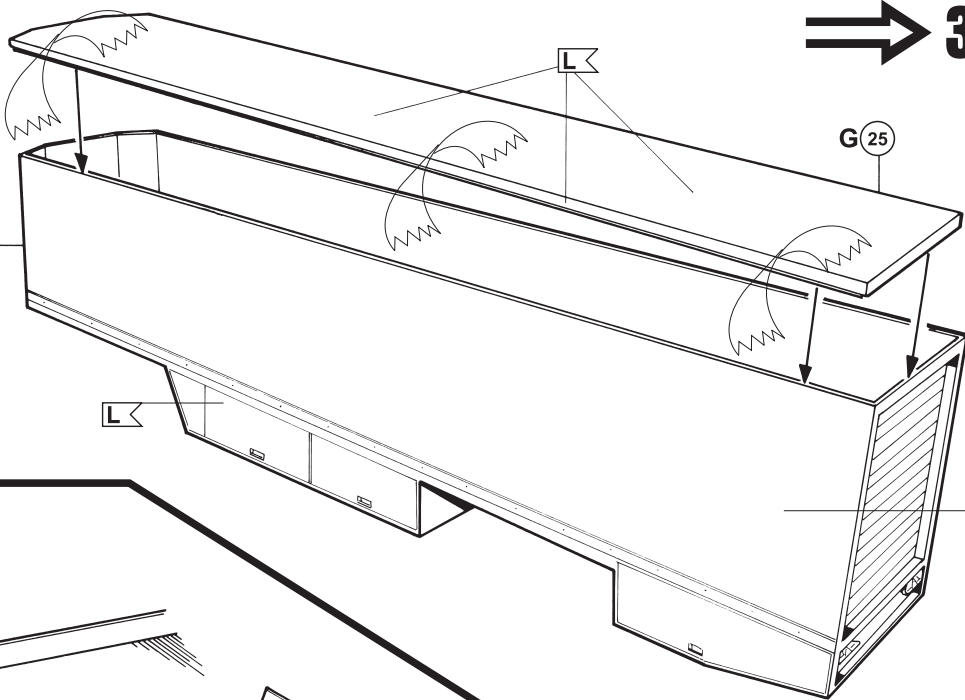
15 



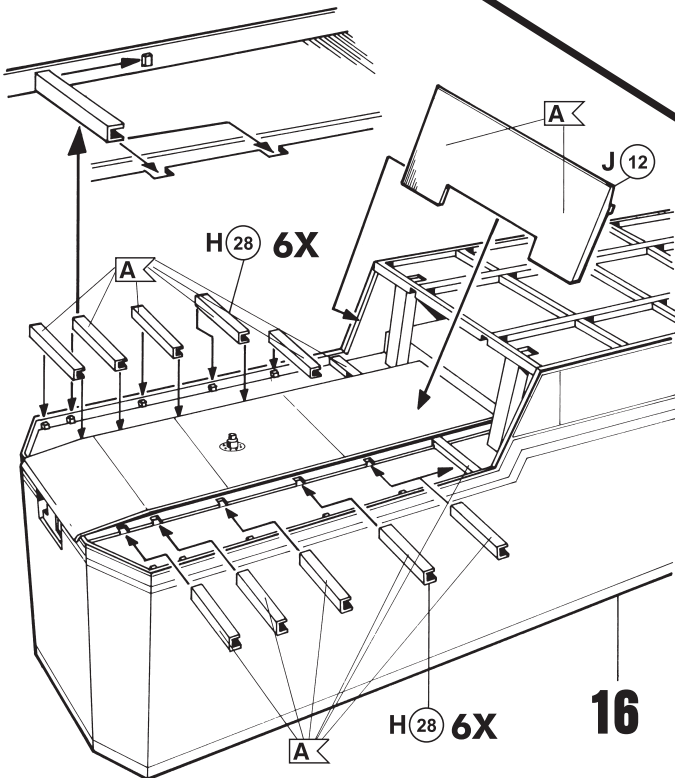
16 



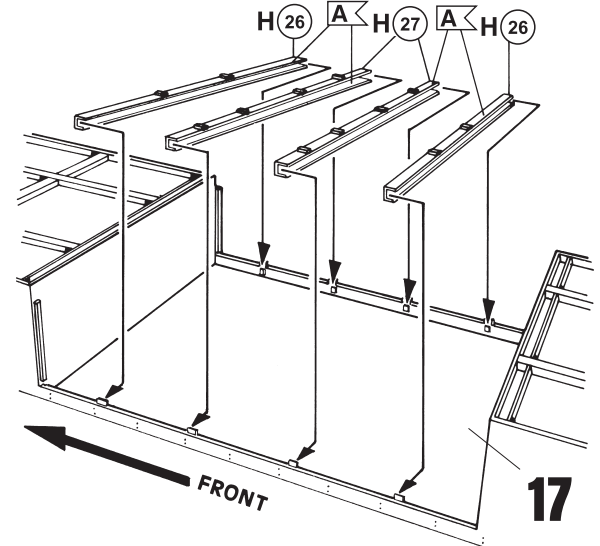
12 Hours



17 



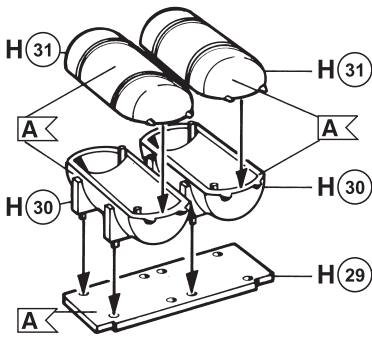
18 



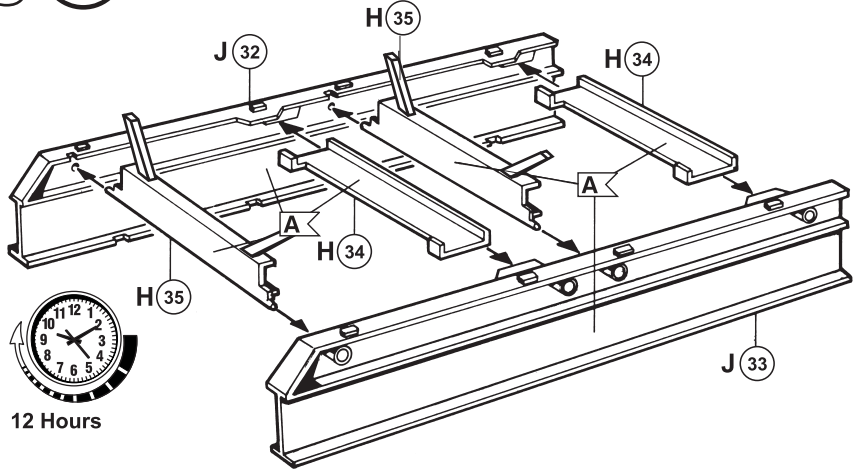
19



2X



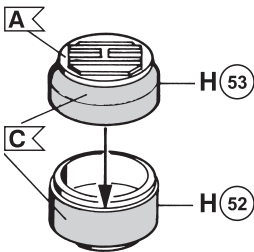
20



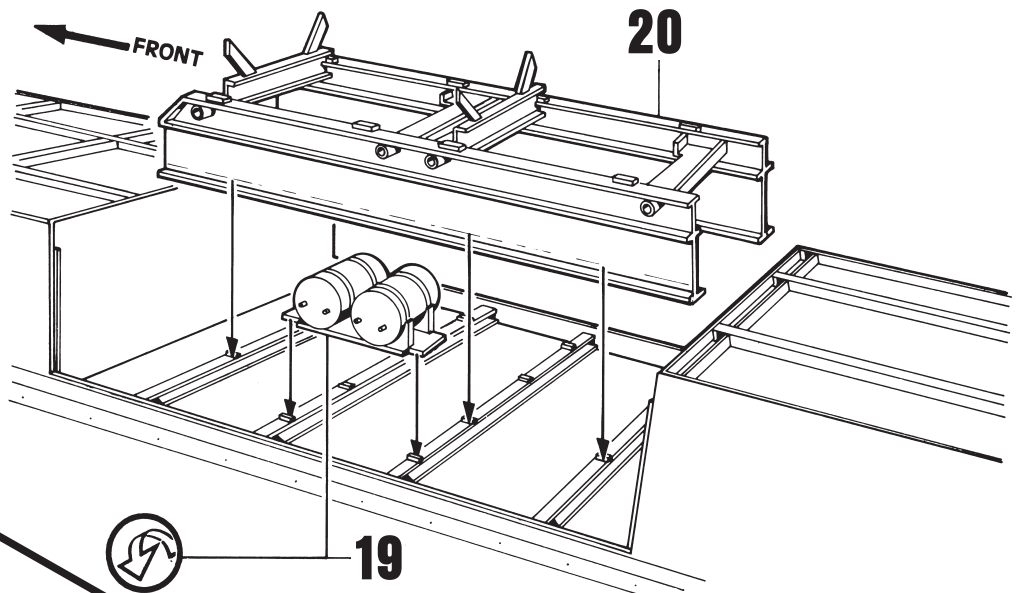
21



4X



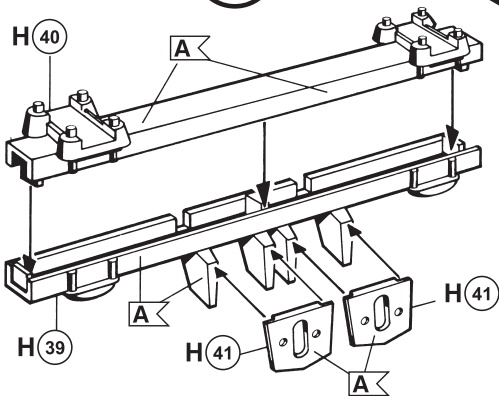
22



23



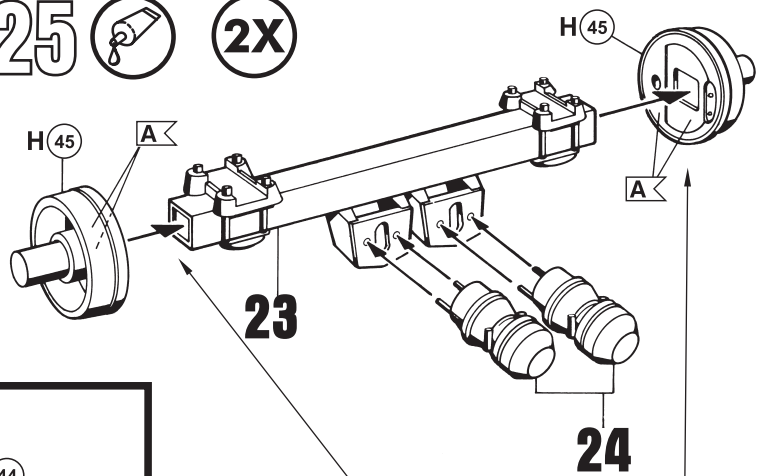
2X



25



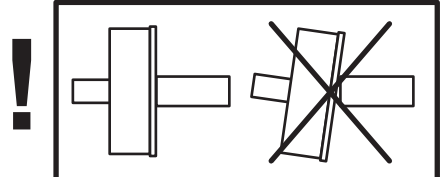
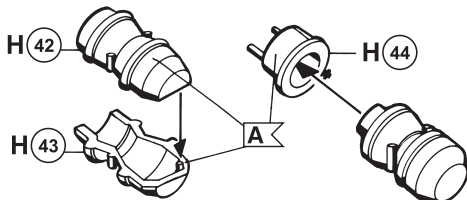
2X



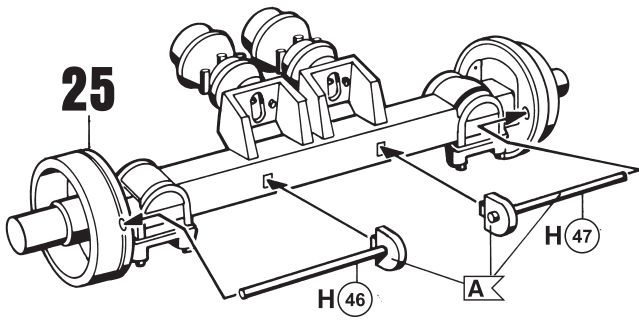
24



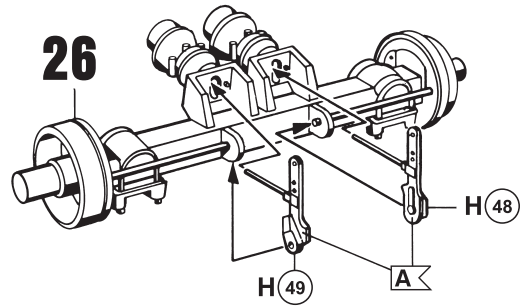
4X



26  (2X)

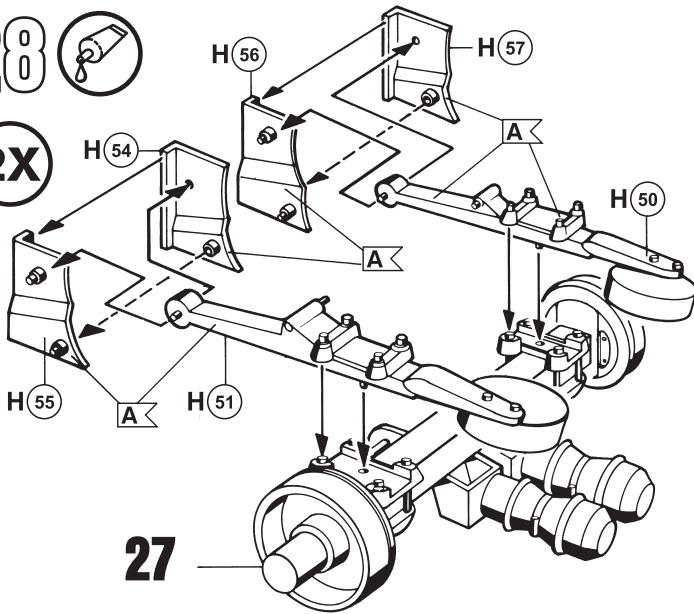


27  (2X)



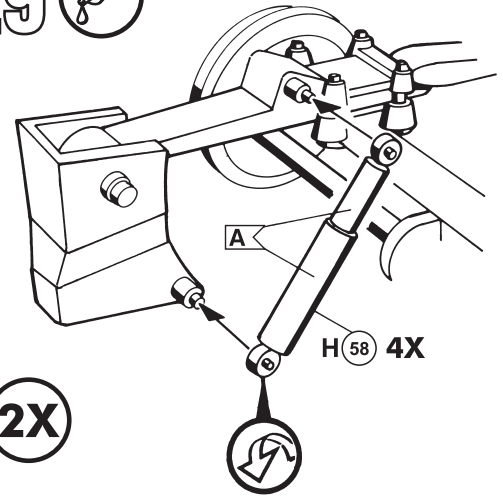
28 

(2X)



29 

(2X)

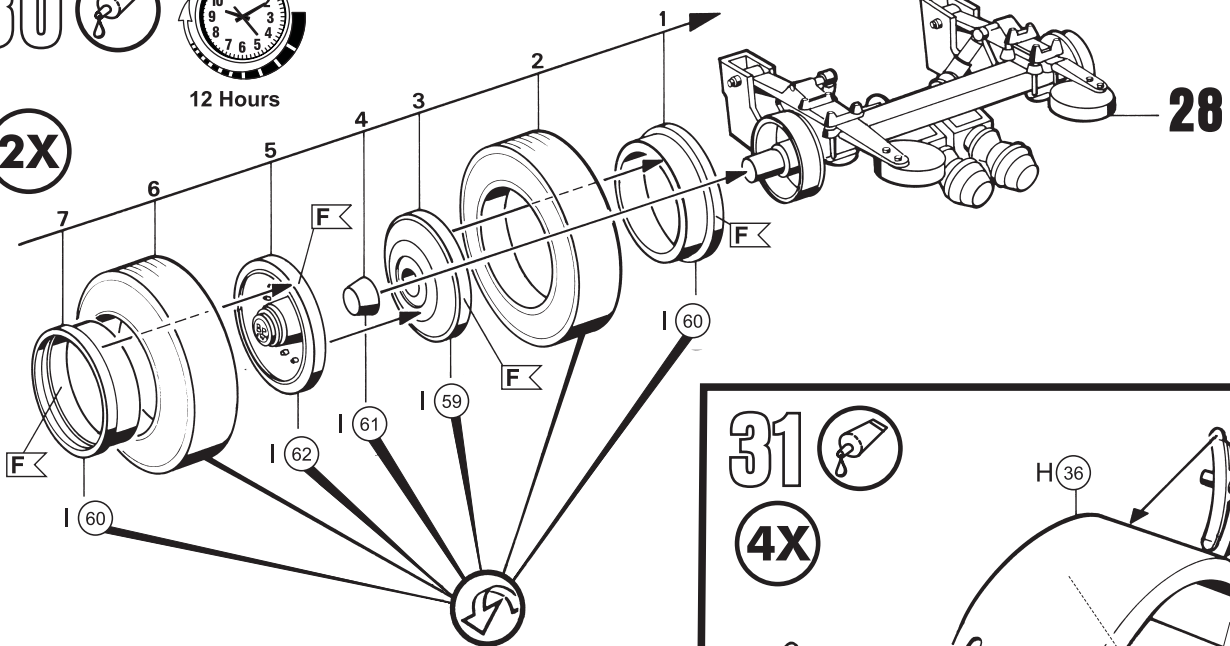


30 



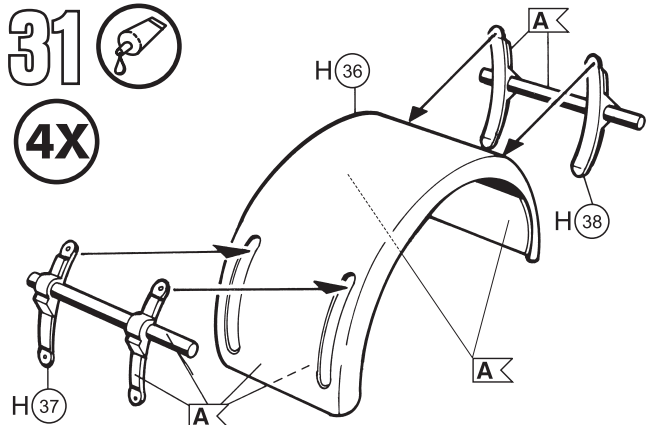
12 Hours

(2X)



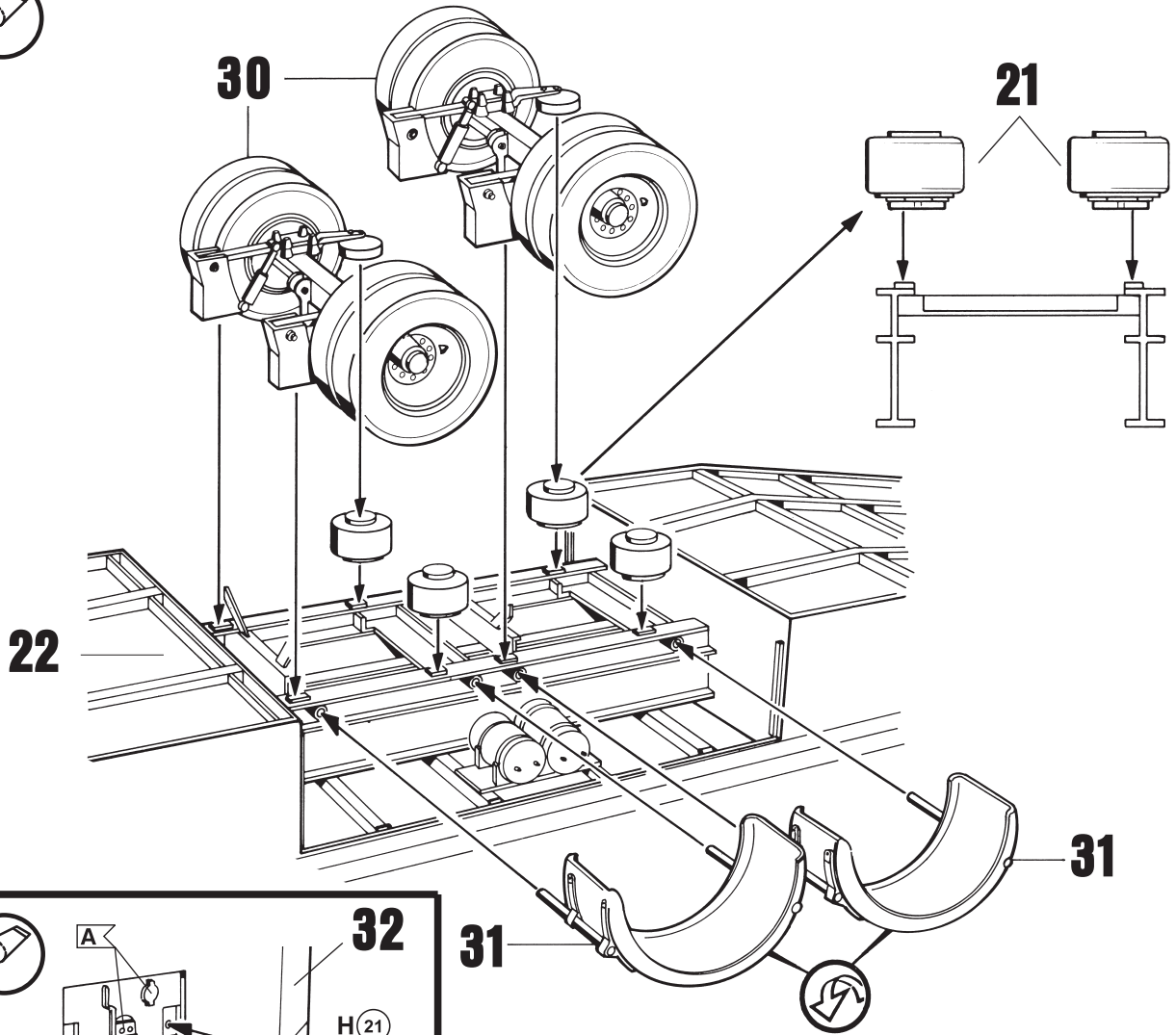
31 

(4X)

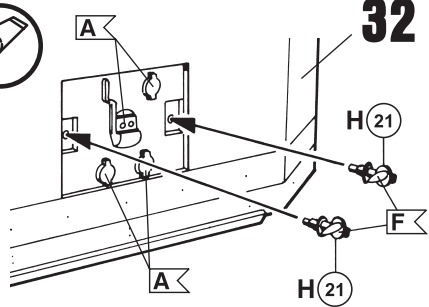




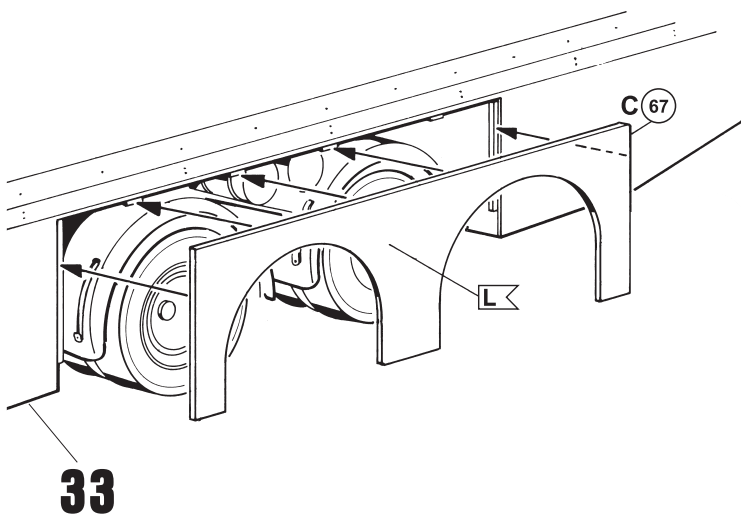
32 



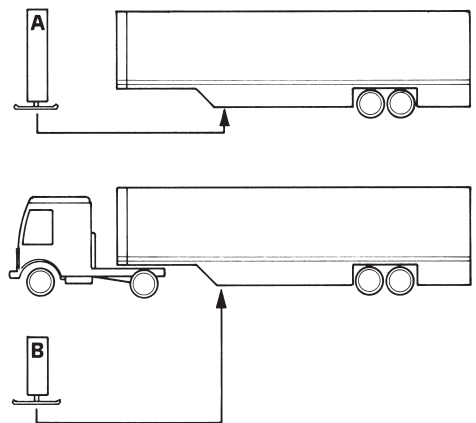
33 



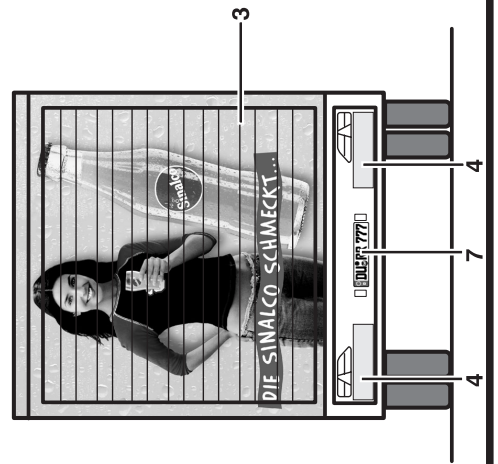
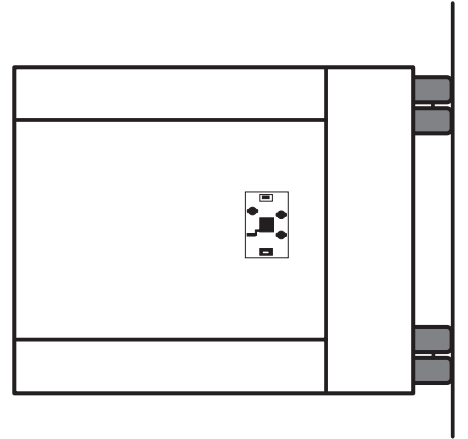
34 



35  



36



37

