

PRESS PILOT INTO SEAT.
PUSH SEAT AND PILOT BETWEEN PINS IN FUSELAGE.
PRESS TAIL WHEEL INTO FUSELAGE.

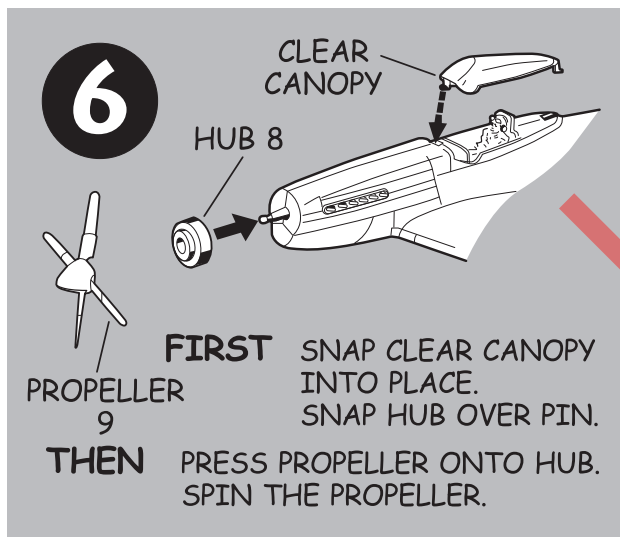
THE P-51 MUSTANG WAS THE MOST POPULAR AND WIDELY PRODUCED FIGHTER OF WORLD WAR II. TOTAL PRODUCTION OF ALL MODELS REACHED 15,576 PLANES. POWERED BY A MERLIN 1650-7 ENGINE BUILT BY PACKARD, THE P-51 HAD A TOP SPEED OF 437 MPH. THIS "D" MODEL HAD A STREAMLINED "BUBBLE" CANOPY WHICH GAVE THE PILOT BETTER VISION. TWO 75 GALLON DROP TANKS PROVIDED AN EXTRA 175 MILES OF CRUISING RANGE. ARMAMENT CONSISTED OF SIX .50 CAL. MACHINE GUNS MOUNTED IN THE WINGS. IT COULD ALSO CARRY TWO 1000 LB. BOMBS IN PLACE OF THE DROP TANKS.

WHILE THIS IS A SNAP TOGETHER KIT AND NEEDS NO CEMENTING, THERE'S NO REASON WHY YOU CAN'T USE CEMENT TO JOIN THE PARTS FOR A STRONGER MODEL.

THE P-51 MUSTANG IS REGARDED TODAY AS A CLASSIC IN PISTON POWERED FIGHTER DESIGN.

SnapTite

JUST FOLLOW THE EASY STEPS, YOU DON'T NEED CEMENT ON THIS SNAP-TITE MODEL.



APPLY SELF-STICK DECALS TO MODEL AS SHOWN ON THE BOX TOP.

PAINTING

YOU CAN PAINT THE DETAILS LISTED. USE ONLY ENAMEL OR PAINT FOR PLASTICS. A SMALL POINTED BRUSH IS BEST FOR DETAILS.

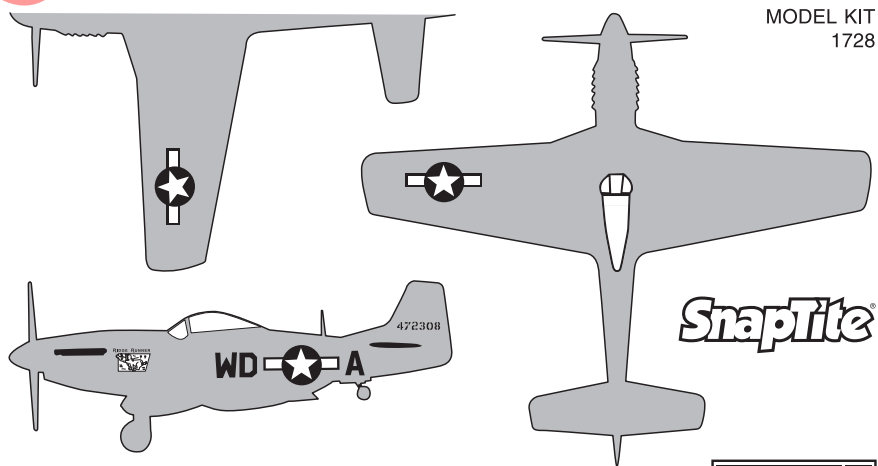
FLAT BLACK - TIRES, EXHAUST PIPES, MACHINE GUNS, PROPELLER BLADES, TAIL WHEEL.

SILVER - WINDSHIELD FRAMEWORK ON CANOPY.

YELLOW - TIPS ON PROPELLER BLADES.

APPLE GREEN - COCKPIT INTERIOR AND SEAT, INSIDE OF LANDING GEAR DOORS AND WHEELS WELLS.

PILOT - FLESH HANDS AND FACE, BROWN UNIFORM, HELMET AND SHOES, WHITE STRAPS.



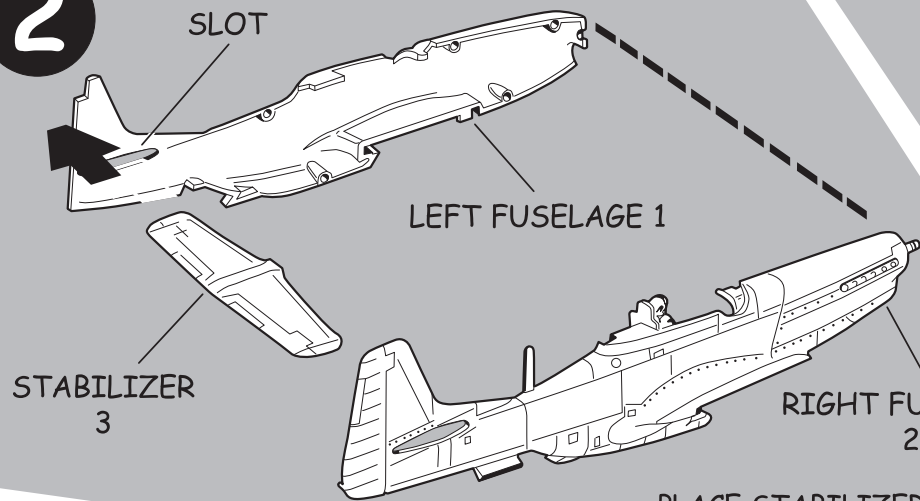
MODEL KIT 1728

MUSTANG P-51D



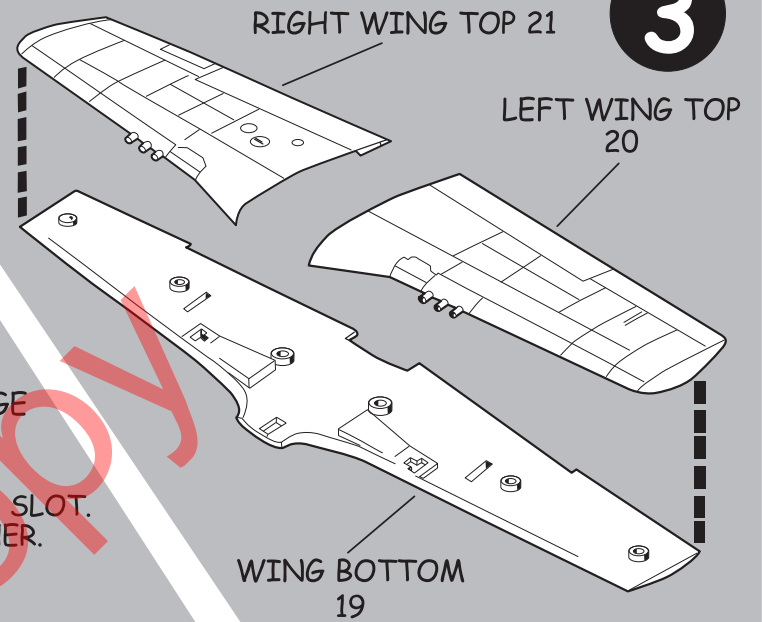
If you have any questions or comments, call our hotline at: (800) 833-3570 or, please write to:
Revell-Monogram Consumer Service Department, 725 Landwehr Road, Northbrook, Illinois 60062
 Be sure to include the plan number (85172800200), part number, description, your return address and phone number.
 Visit our website: www.revellmonogram.com

2



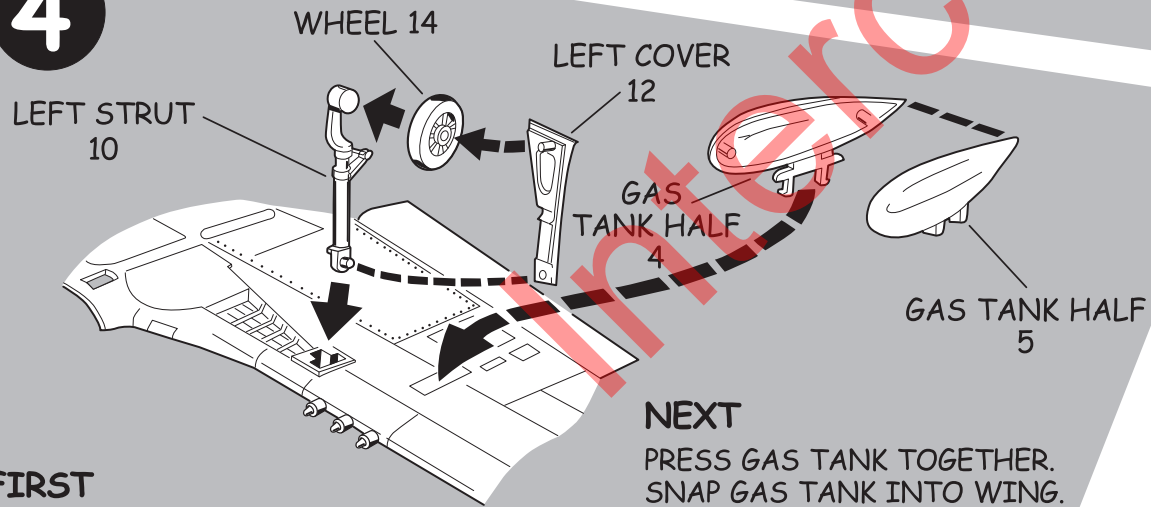
PRESS WING TOPS INTO WING BOTTOM.

3



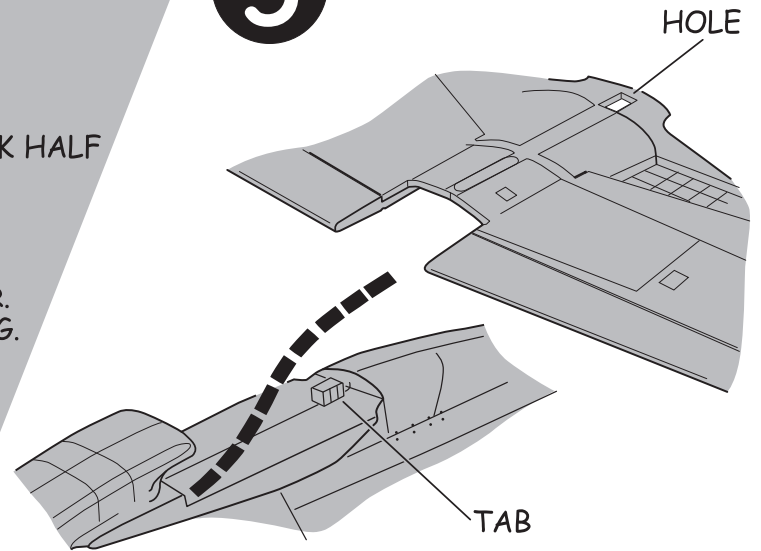
PLACE STABILIZER INTO SLOT.
SNAP FUSELAGE TOGETHER.

4



SNAP WING INTO PLACE.

5



FIRST

PRESS WHEEL ONTO STRUT.
PRESS COVER ONTO WHEEL AND STRUT.
PUSH COVER AND STRUT INTO WING.

THEN

DO THE SAME FOR OTHER WHEEL, STRUT AND COVER.

NEXT

PRESS GAS TANK TOGETHER.
SNAP GAS TANK INTO WING.

LAST

DO THE SAME FOR OTHER
GAS TANK.