

# '51 Anglia Drag Sedan

The drag racing version of the 1951 Ford Anglia was one of the most popular performers on drag strips, particularly in the Sedan-Coupe class.

The "stubby" appearing sedan with the high but light weight body seemed to be "standing on it's toes" as it made each crowd-pleasing entrance, due to the large rear slicks and small front wheels. It was no slouch though as it could race 140 mph in 9 seconds or less! In converting an Anglia from "street" to "drag", most builders leave the bodywork

unaltered except for using lightweight fiberglass to replace steel in the doors, fenders, hood, and trunk with the idea that the less weight, the better the performance.

Your authentic detailed 1/25 Revell model represents a typical "drag" Anglia that competed back in the 60's heyday of drag racing. It is complete with a flip front end, opening doors and trunk, short wheelbase chassis, full interior, and small bore injected Olds engine.



\* REPEAT SEVERAL TIMES  
\* A REPETER PLUSIEURS FOIS



\* OPTIONAL PARTS  
\* PIECES EN OPTION



\* DECAL  
\* DECAL COMANIE



\* ALTERNATIVE ASSEMBLY  
\* ENSEMBLAGE ALTERNATIVE



\* CEMENT TOGETHER  
\* A COLLER



\* REMOVE AND THROW AWAY  
\* A RETIRER ET JETER



\* DO NOT CEMENT  
\* NE PAS COLLER

### READ THIS BEFORE YOU BEGIN

- \* Study the assembly drawings.
- \* Each plastic part is identified by a number.
- \* In the assembly drawings, some parts will be marked by a star (★) to indicate chrome plated plastic.
- \* For better paint and decal adhesion, wash the plastic parts in a mild detergent solution. Rinse and let air dry.
- \* Check the fit of each piece before cementing in place.
- \* Use only cement for polystyrene plastic.
- \* Scrape plating and paint from areas to be cemented.
- \* Allow paint to dry thoroughly before handling parts.
- \* Any unused parts may be discarded.

### DECAL APPLICATION INSTRUCTIONS

1. Cut desired decal from sheet.
2. Dip decal in water for a few seconds.
3. Place wet decal on paper towel.
4. Wait until decal is movable on paper backing.
5. Place decal in position on model, face up and slide backing away.
6. Press out air bubbles with a soft damp cloth.
7. Milkiness that may appear is for better decal adhesion and will dry clear. Wipe away any excess adhesive.
8. Do not touch decal until fully dry.
9. Allow the decals 48 hours to dry before applying clear coat.

**NOTE:** Decals are compatible with setting solutions or solvents.

### LIRE CE QUI SUIT AVANT DE COMMENCER

- \* Etudier les schémas de montage.
- \* Chaque pièce en plastique est identifiée par un numéro.
- \* Sur les schémas de montage, certaines pièces sont marquées d'une étoile (★) pour indiquer qu'elles sont en plastique chromé.
- \* Pour une meilleure prise de la peinture et des autocollants, laver les pièces en plastique avec une solution détergente peu concentrée. Les rincer et les laisser sécher à l'air.
- \* Vérifier que chaque pièce s'ajuste bien avant de la coller en place.
- \* N'utiliser que de la colle pour polystyrène.
- \* Gratter les parties à coller pour enlever le chrome et la peinture.
- \* Laisser la peinture bien sécher avant de manipuler les pièces.
- \* Toute pièce inutilisée peut être jetée.

### DIRECTIVES D'APPLICATION DES AUTOCOLLANTS

1. Découper l'autocollant désiré de la feuille.
2. Tremper l'autocollant dans de l'eau pendant quelques secondes.
3. Placer l'autocollant mouillé sur une serviette en papier.
4. Attendez que l'autocollant puisse être déplacé sur son support en papier.
5. Mettre l'autocollant en position sur le modèle face sur le dessus et faire glisser le support pour l'enlever.
6. Appuyer avec un chiffon doux humide pour éliminer les bulles d'air.
7. La substance laiteuse qui peut apparaître est destinée à améliorer l'adhésion de l'autocollant et devient incolore au séchage. Essuyer pour enlever tout excédent d'adhésif.
8. Ne pas toucher l'autocollant tant qu'il n'est pas bien sec.
9. Laisser l'autocollant sécher pendant 48 heures avant d'appliquer une couche transparente.

**REMARQUE:** Les autocollants sont compatibles avec les solutions de fixage ou les solvants.

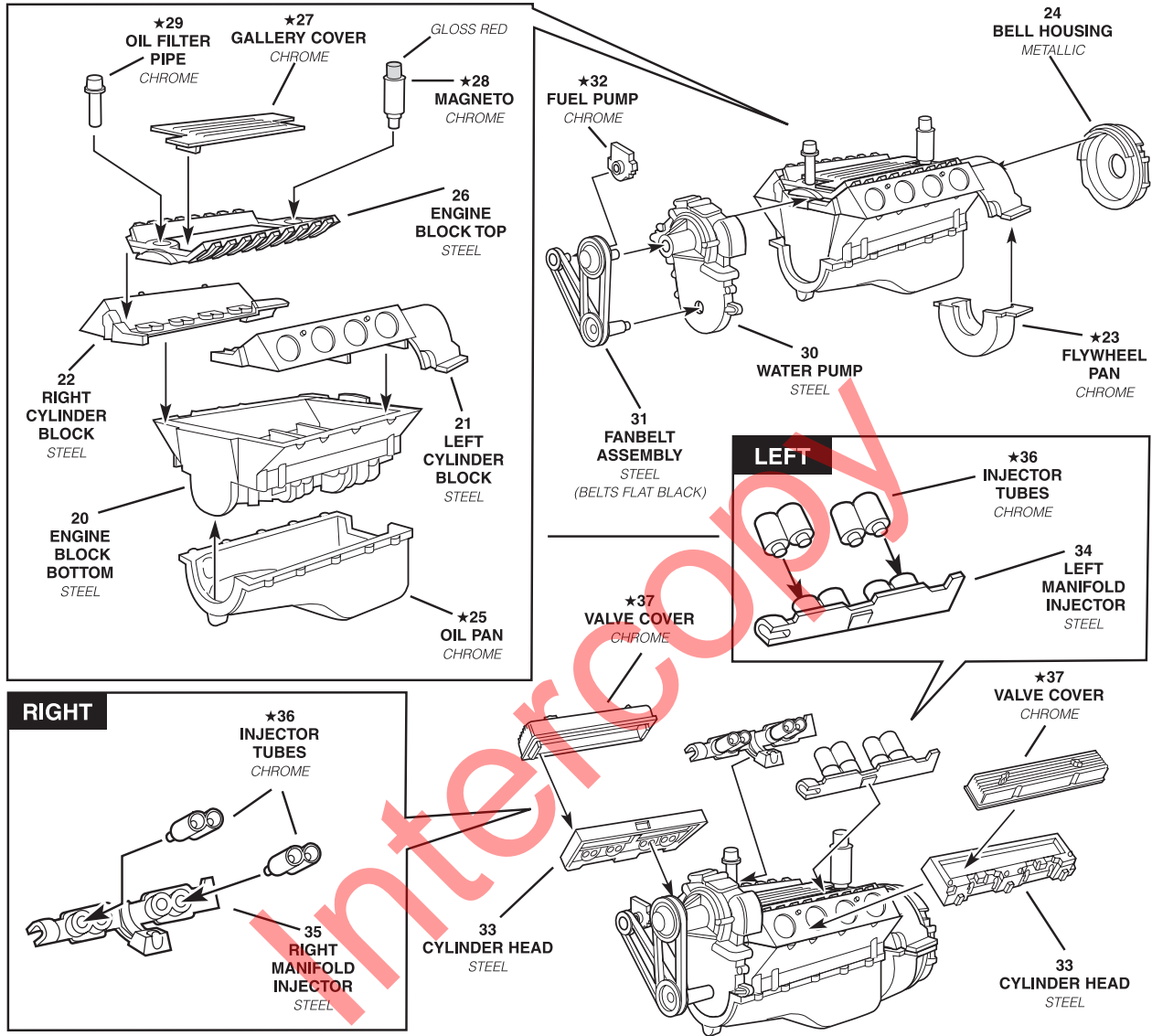
**This paint guide is provided to complete this kit as shown on the box.**

*Ce guide de peinture est fourni pour reproduire le modèle réduit qui apparaît sur la boîte.*

FLAT BLACK	NOIR MAT
METALLIC	METALLIC
GLOSS BLUE	BLEU LUSTRE*
GLOSS RED	ROUGE LUSTRE*

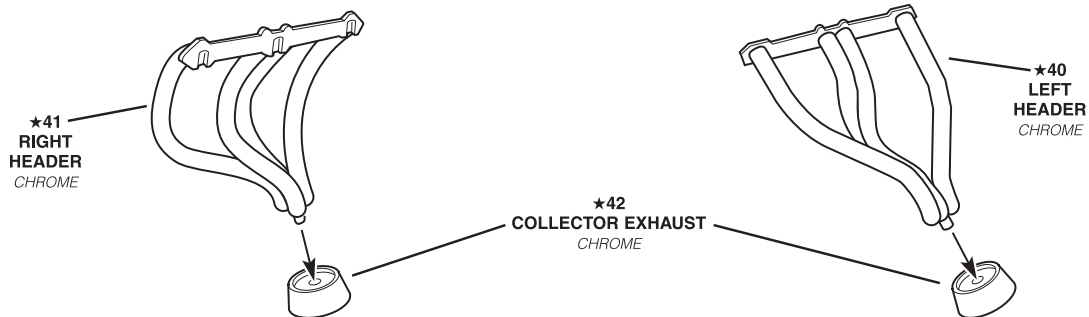
# 1

# ENGINE ASSEMBLY



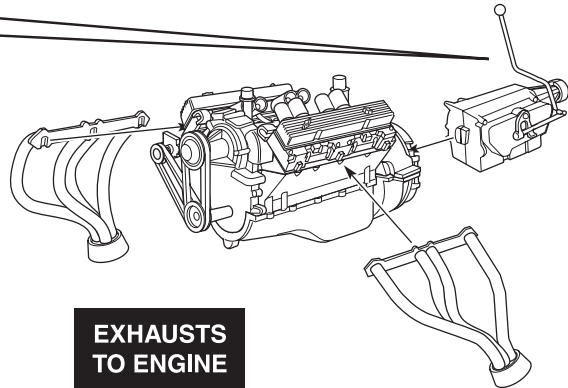
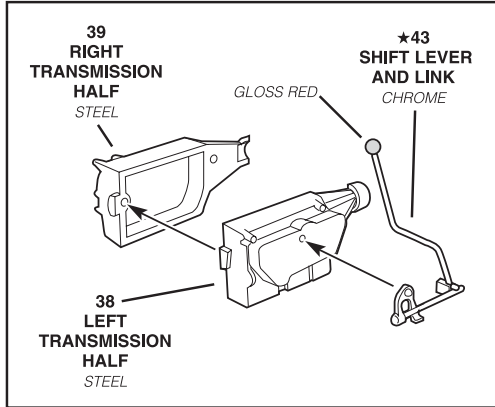
# 2

# EXHAUSTS ASSEMBLY



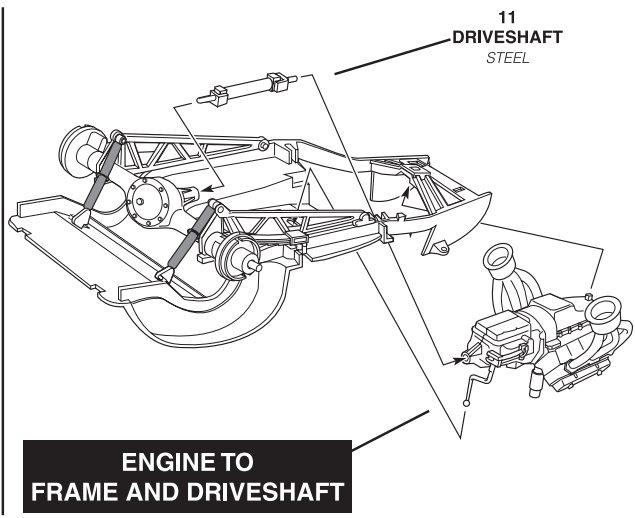
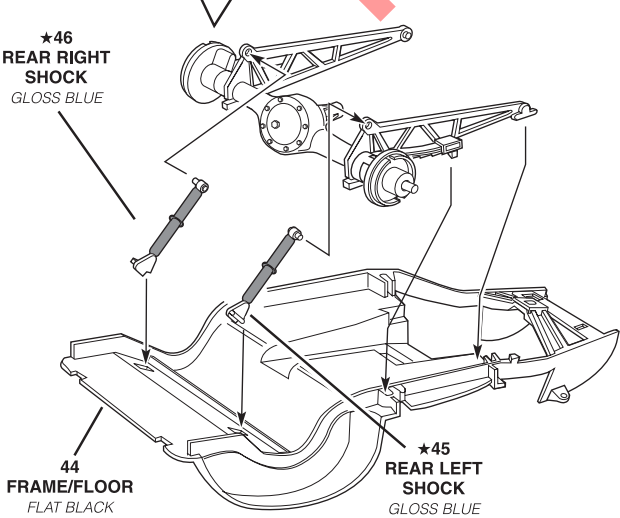
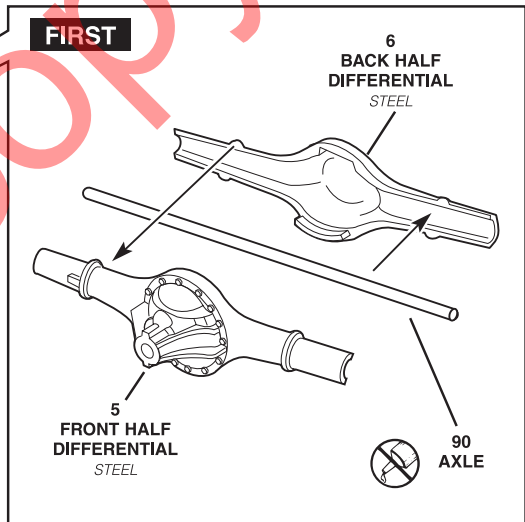
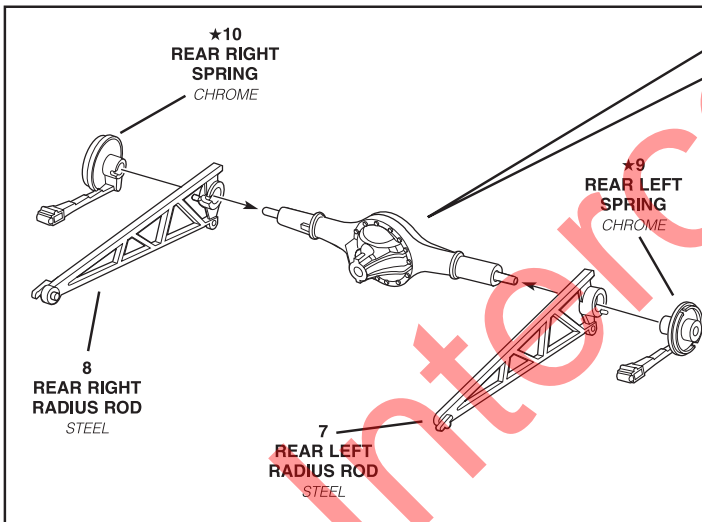
# 3

# TRANSMISSION ASSEMBLY



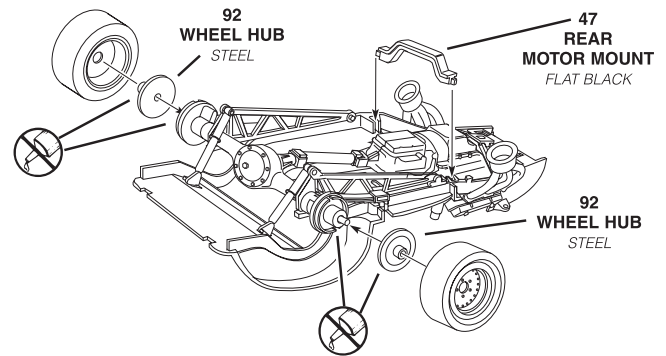
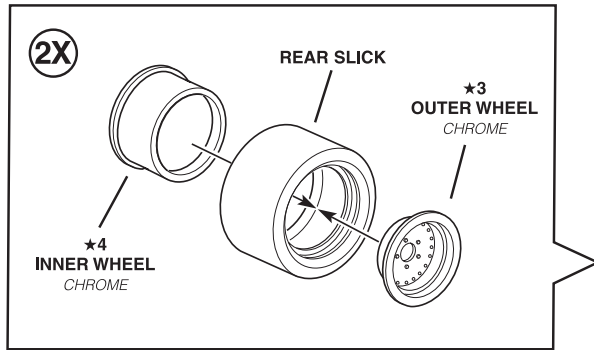
# 4

# REAR SUSPENSION ASSEMBLY



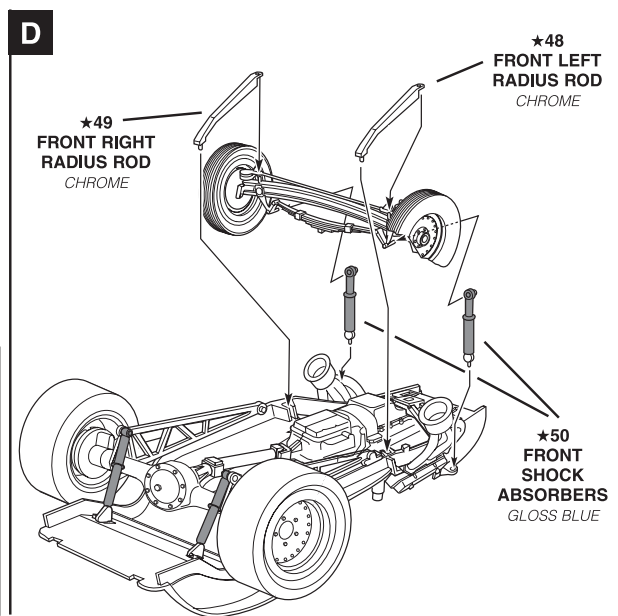
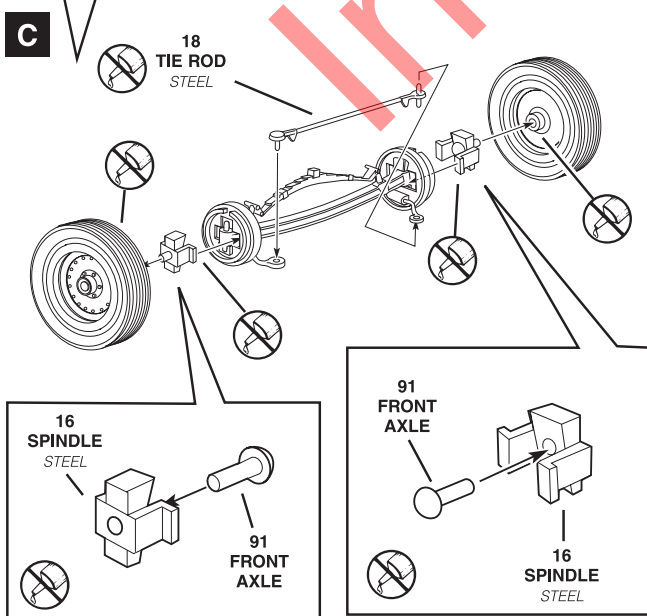
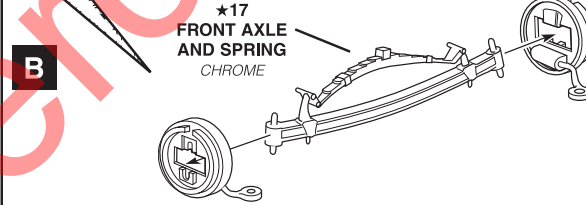
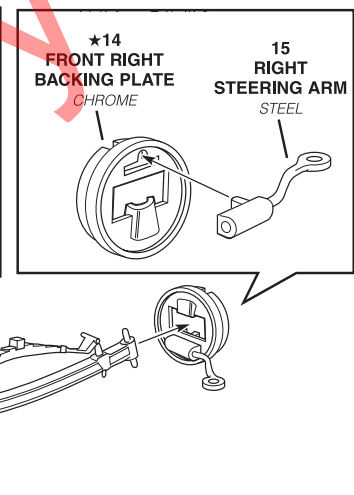
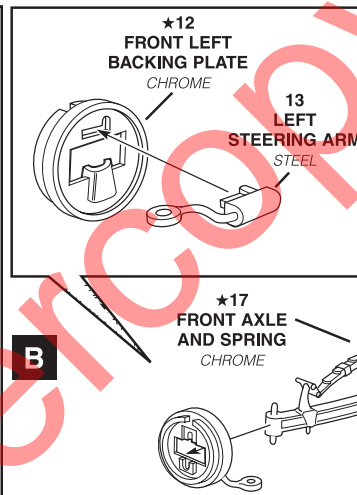
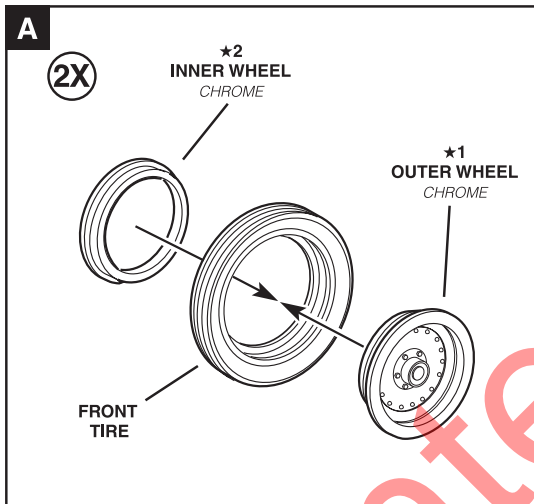
# 5

# REAR WHEEL ASSEMBLY



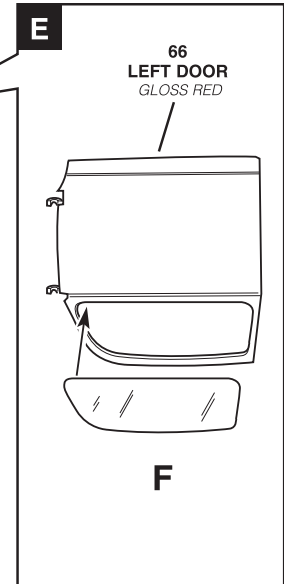
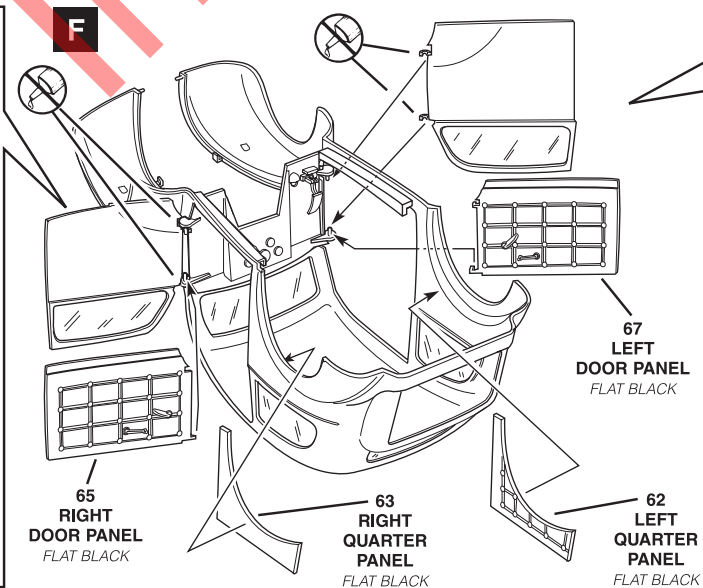
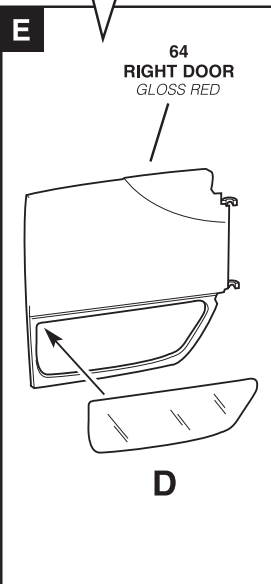
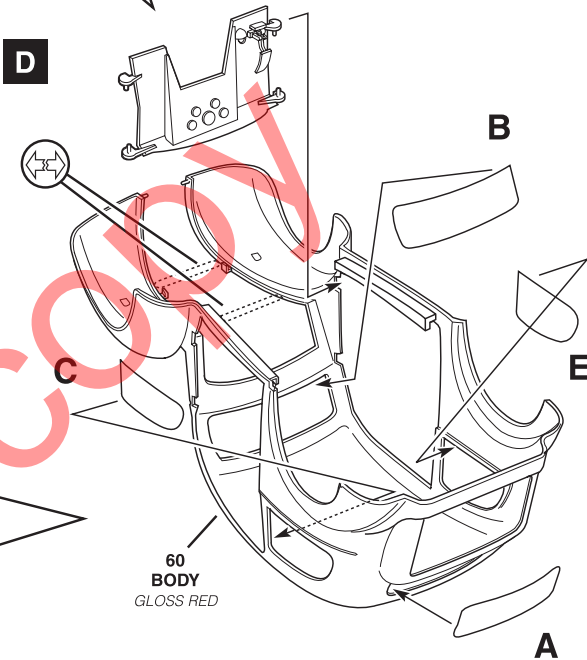
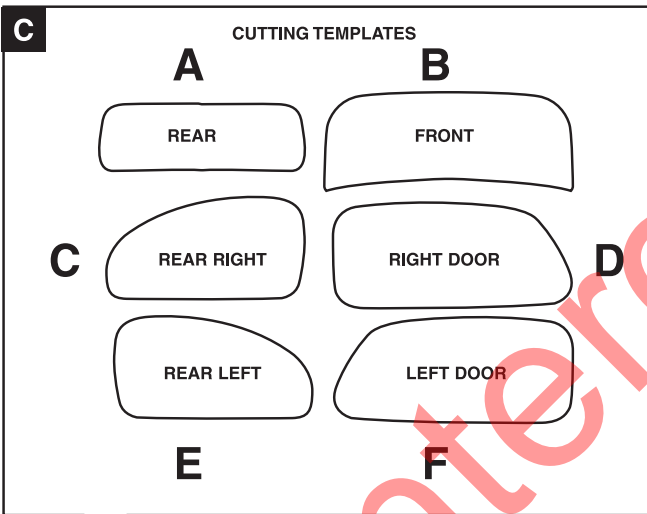
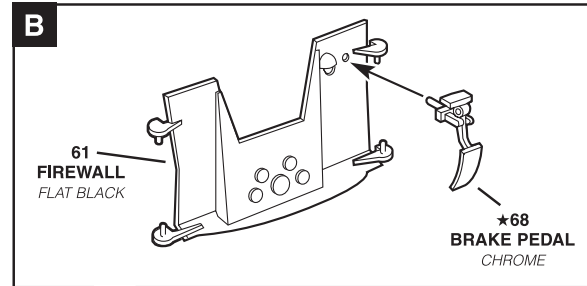
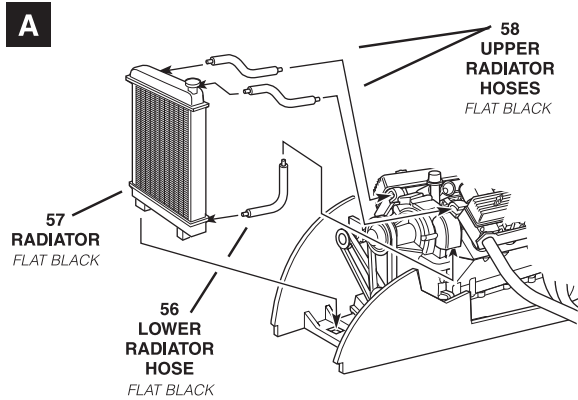
# 6

# FRONT SUSPENSION ASSEMBLY



# 7

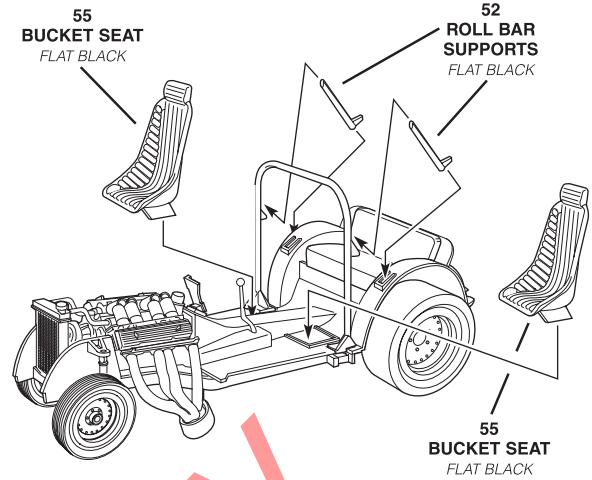
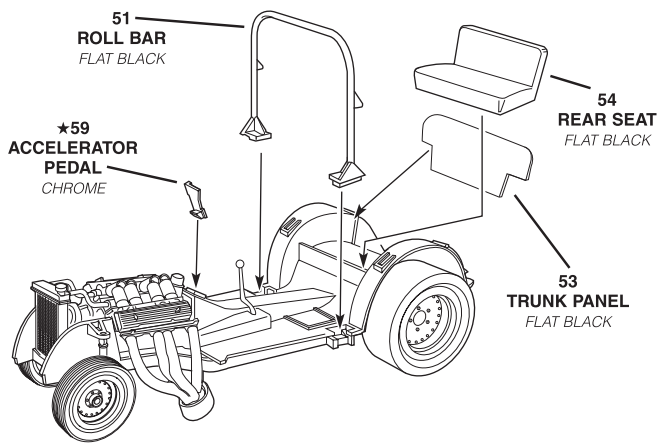
# RADIATOR/FIREWALL/WINDOW ASSEMBLY





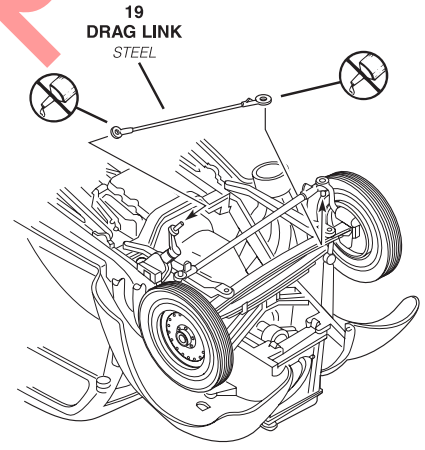
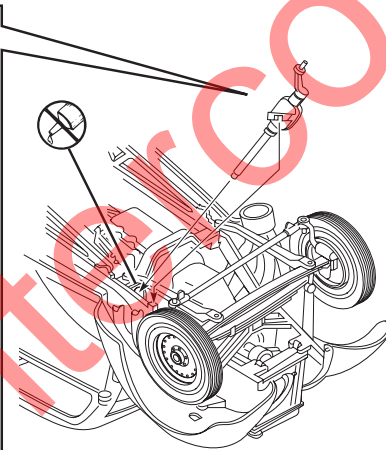
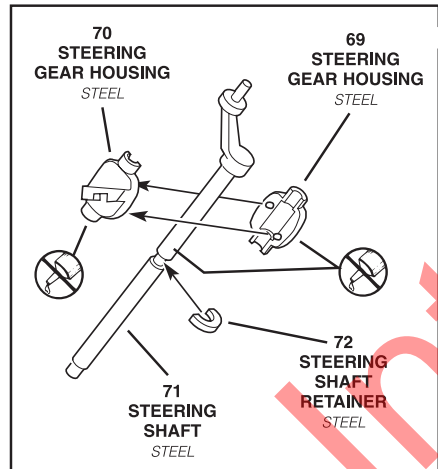
# 8

# INTERIOR ASSEMBLY



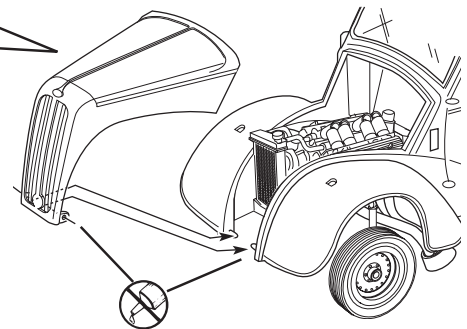
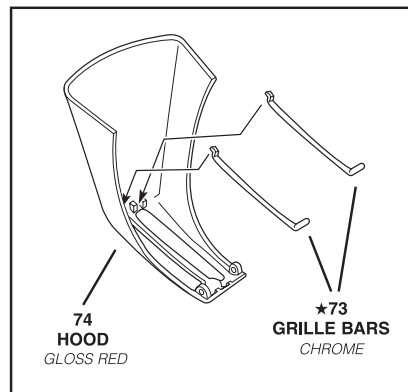
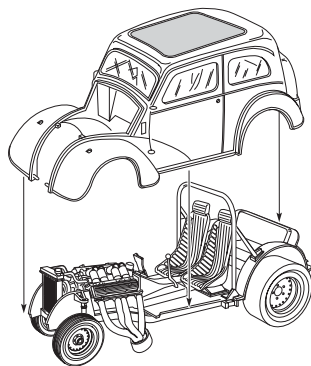
# 9

# STEERING ASSEMBLY



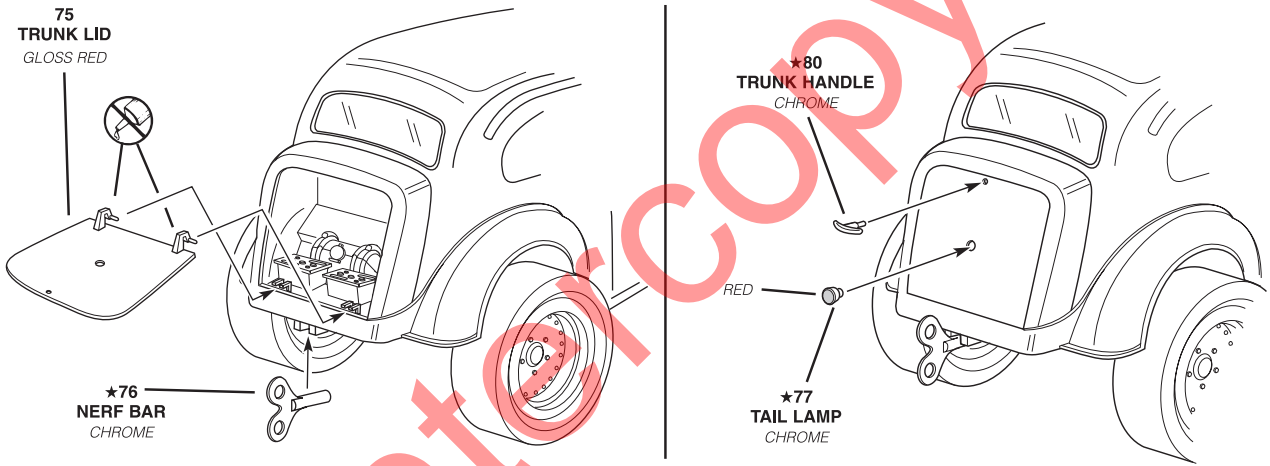
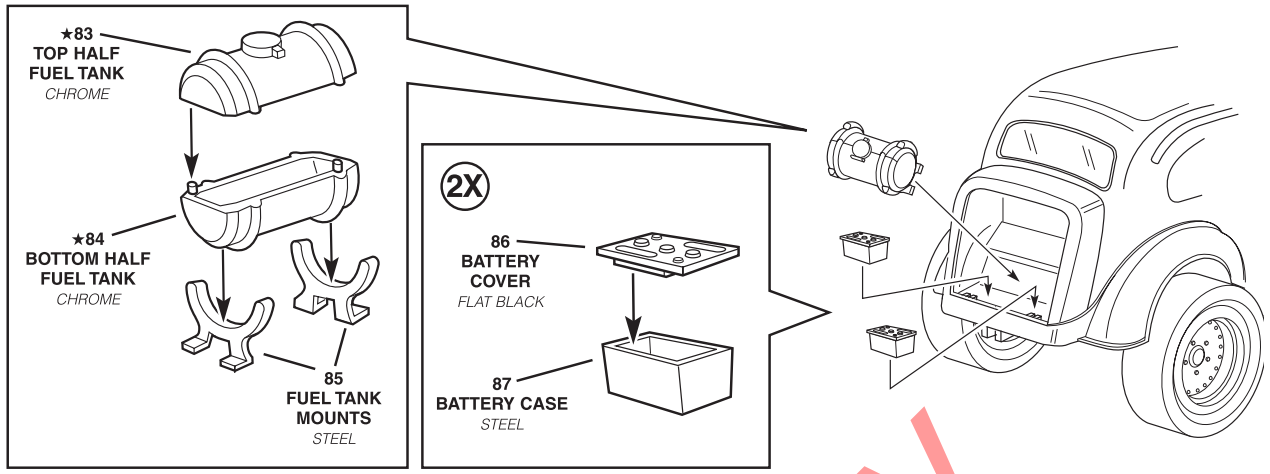
# 10

# BODY / HOOD ASSEMBLY



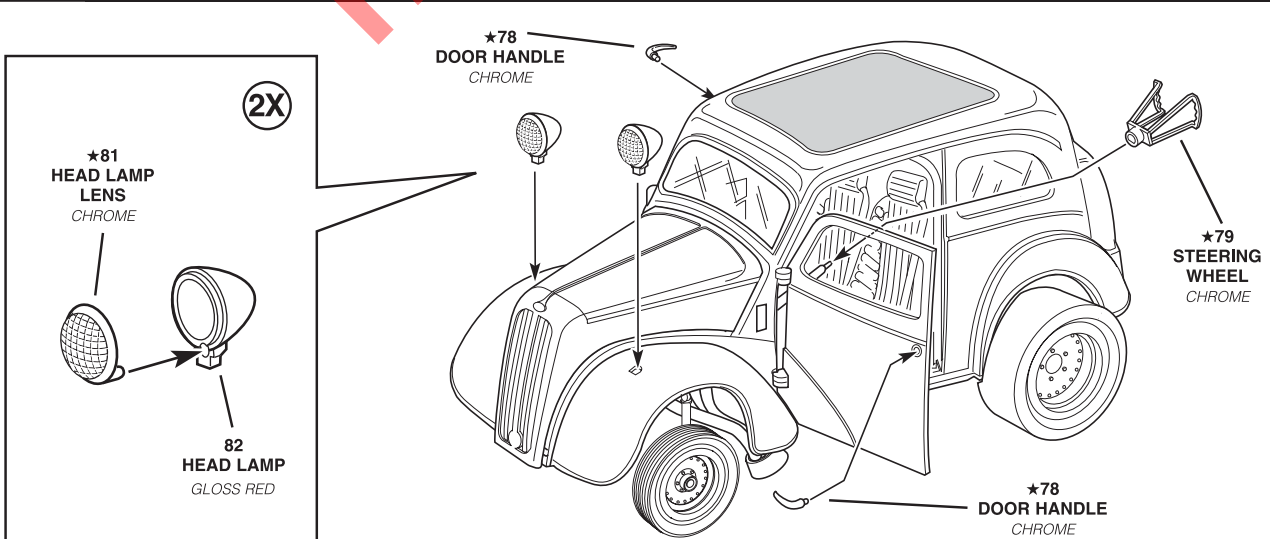
# 11

# REAR ASSEMBLY



# 12

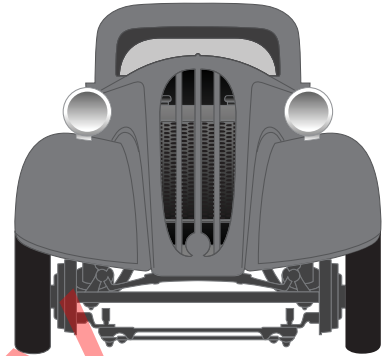
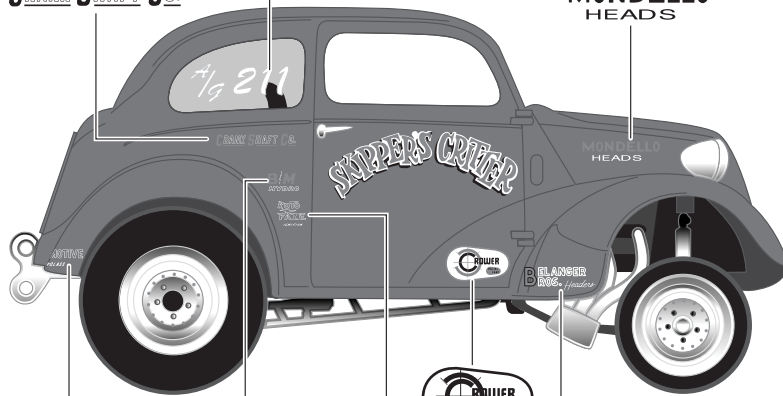
# FINAL ASSEMBLY



A/g 211

CRANK SHAFT CO.

MONDELLO HEADS

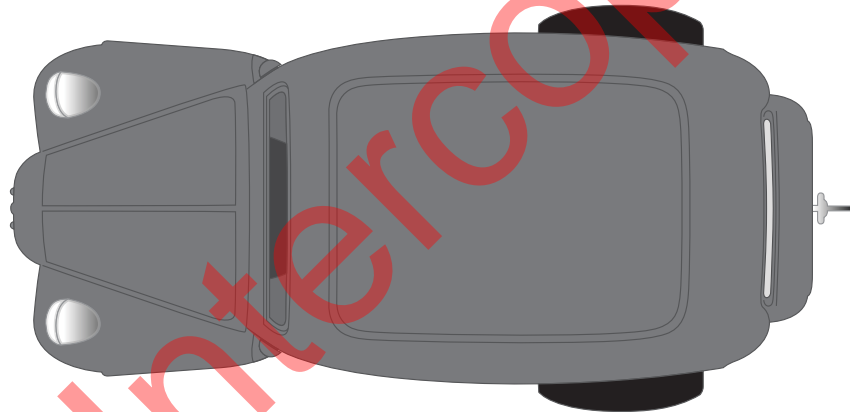


AL AUTOMOTIVE FIBERGLASS

B/M HYDRO

ROTO FAZE IGNITION

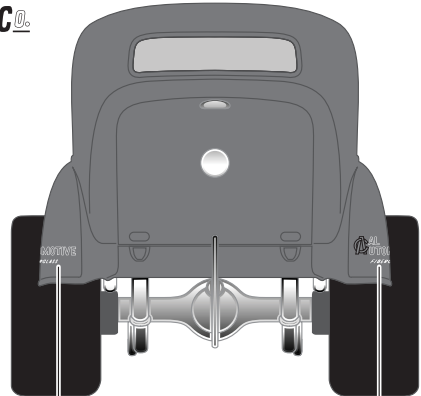
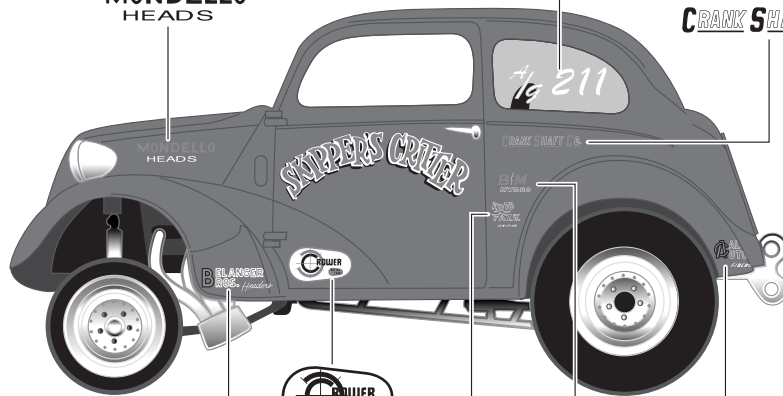
BELANGER BROS. Headers



A/g 211

MONDELLO HEADS

CRANK SHAFT CO.



BELANGER BROS. Headers

ROTO FAZE IGNITION

B/M HYDRO

AL AUTOMOTIVE FIBERGLASS

