



KIT2180

85218010200

'77 Jeep® CJ-7 Renegade 2'N 1

The vehicle we all know as the Jeep® originally started out as an idea, a sketch and an open challenge to America's auto manufacturers. Aware of rising tensions in Europe, the US Army was in the process of modernizing the armaments and equipment used by our armed forces.

One of the concepts the Army desired was an all-purpose small vehicle capable of carrying from 1 to 4 occupants as well as the ability to have smaller weapons mounted. Because the potential areas that this vehicle was to be used might have poor or non-existent roadways, it had to have a four wheel drive or similar system.

The Army's call for respondents among the auto makers as to whom would submit designs and running prototypes for the new "general purpose" vehicle resulted in three companies in the running for this potentially lucrative contract. In the end, the design from Willys, a small American manufacturer, was the Army's choice. Because of Willys' limited production capability, the Army contracted Ford to produce the Jeep® based on the Willys design for the government. Over 640,000 were built during World War II. They were tough, dependable and got more than a few American servicemen out of tight situations.

News of the Jeep's® strong performance in the war effort traveled far and wide. In fact, at the end of WWII many servicemen wanted to bring their beloved Jeep® back home with them. There were also large numbers of people back home that wanted their own. So as soon as was possible, Willys started production on the first CJ, which stood for Civilian Jeep®. Those first CJs were not far removed from the military version, but that was what the first post-war buyers wanted. These were basic, almost spartan vehicles, but also great fun and unlike anything available to the American motoring public at the time.

Over the years, Jeeps® have undergone many changes but the basic concept remains the same. Your Revell kit builds up to an authentic replica of the CJ-7 model, which was first introduced in 1976. The CJ-7 had a wheelbase over a foot longer than the original military version which, when combined with more advanced tires and suspension, made for a much more comfortable ride. This was also the first Jeep® to offer automatic transmissions, hardtops and doors as factory options.

You have two versions available of your Jeep® CJ-7 Renegade to build. You can go with the hard-top "suburban" version seen on streets and in parking lots across America. Or add some of the extra off-



top equipped road parts we've included



*** REPEAT SEVERAL TIMES**
* A REPETER PLUSIEURS FOIS



*** OPTIONAL PARTS**
* PIECES EN OPTION



*** DECAL**
* DECAL COMANIE



*** ALTERNATIVE ASSEMBLY**
* ENSEMBLAGE ALTERNATIVE



*** CEMENT TOGETHER**
* A COLLER



*** REMOVE AND THROW AWAY**
* A RETIRER ET JETER



*** DO NOT CEMENT**
* NE PAS COLLER

READ THIS BEFORE YOU BEGIN

- * Study the assembly drawings.
- * Each plastic part is identified by a number.
- * In the assembly drawings, some parts will be marked by a star (★) to indicate chrome plated plastic.
- * For better paint and decal adhesion, wash the plastic parts in a mild detergent solution. Rinse and let air dry.
- * Check the fit of each piece before cementing in place.
- * Use only cement for polystyrene plastic.
- * Scrape plating and paint from areas to be cemented.
- * Allow paint to dry thoroughly before handling parts.
- * Any unused parts may be discarded.

DECAL APPLICATION INSTRUCTIONS

1. Cut desired decal from sheet.
2. Dip decal in water for a few seconds.
3. Place wet decal on paper towel.
4. Wait until decal is movable on paper backing.
5. Place decal in position on model, face up and slide backing away.
6. Press out air bubbles with a soft damp cloth.
7. Milkyness that may appear is for better decal adhesion and will dry clear. Wipe away any excess adhesive.
8. Do not touch decal until fully dry.
9. Allow the decals 48 hours to dry before applying clear coat.

NOTE: Decals are compatible with setting solutions or solvents.

LIRE CE QUI SUIT AVANT DE COMMENCER

- * Etudier les schémas de montage.
- * Chaque pièce en plastique est identifiée par un numéro.
- * Sur les schémas de montage, certaines pièces sont marquées d'une étoile (★) pour indiquer qu'elles sont en plastique chromé.
- * Pour une meilleure prise de la peinture et des autocollants, laver les pièces en plastique avec une solution détergente peu concentrée. Les rincer et les laisser sécher à l'air.
- * Vérifier que chaque pièce s'ajuste bien avant de la coller en place.
- * N'utiliser que de la colle pour polystyrène.
- * Gratter les parties à coller pour enlever le chrome et la peinture.
- * Laisser la peinture bien sécher avant de manipuler les pièces.
- * Toute pièce inutilisée peut être jetée.

DIRECTIVES D'APPLICATION DES AUTOCOLLANTS

1. Découper l'autocollant désiré de la feuille.
2. Tremper l'autocollant dans de l'eau pendant quelques secondes.
3. Placer l'autocollant mouillé sur une serviette en papier.
4. Attendez que l'autocollant puisse être déplacé sur son support en papier.
5. Mettre l'autocollant en position sur le modèle face sur le dessus et faire glisser le support pour l'enlever.
6. Appuyer avec un chiffon doux humide pour éliminer les bulles d'air.
7. La substance laiteuse qui peut apparaître est destinée à améliorer l'adhésion de l'autocollant et devient incolore au séchage. Essuyer pour enlever tout excédent d'adhésif.
8. Ne pas toucher l'autocollant tant qu'il n'est pas bien sec.
9. Laisser l'autocollant sécher pendant 48 heures avant d'appliquer une couche transparente.

REMARQUE: Les autocollants sont compatibles avec les solutions de fixation ou les solvants.

This optional paint guide is provided if you choose to detail paint your model.

Ce guide de peinture vous sera fourni si vous choisissez de peindre votre modèle en détail.

Aluminum	Aluminum
Engine Blue	Bleu moteur
Flat Black	Noir mat
Flat Brown	Brun mat
Flat White	Blanc mat
Gloss Black	Noir lustré
Gloss Red	Rouge lustré
Gloss Yellow	Jaune lustré
Jet Exhaust	Flux d'éjection
Semigloss Black	Noir satiné
Steel	Acier
Tan	Havane
Transparent Red	Rouge transparent
Turn signal Amber	Feu de virage ambre

If you have any questions or comments, call our hotline at: **(800) 833-3570**
or, please write to:

Revell-Monogram Consumer Service Department, 725 Landwehr Road, Northbrook, Illinois 60062

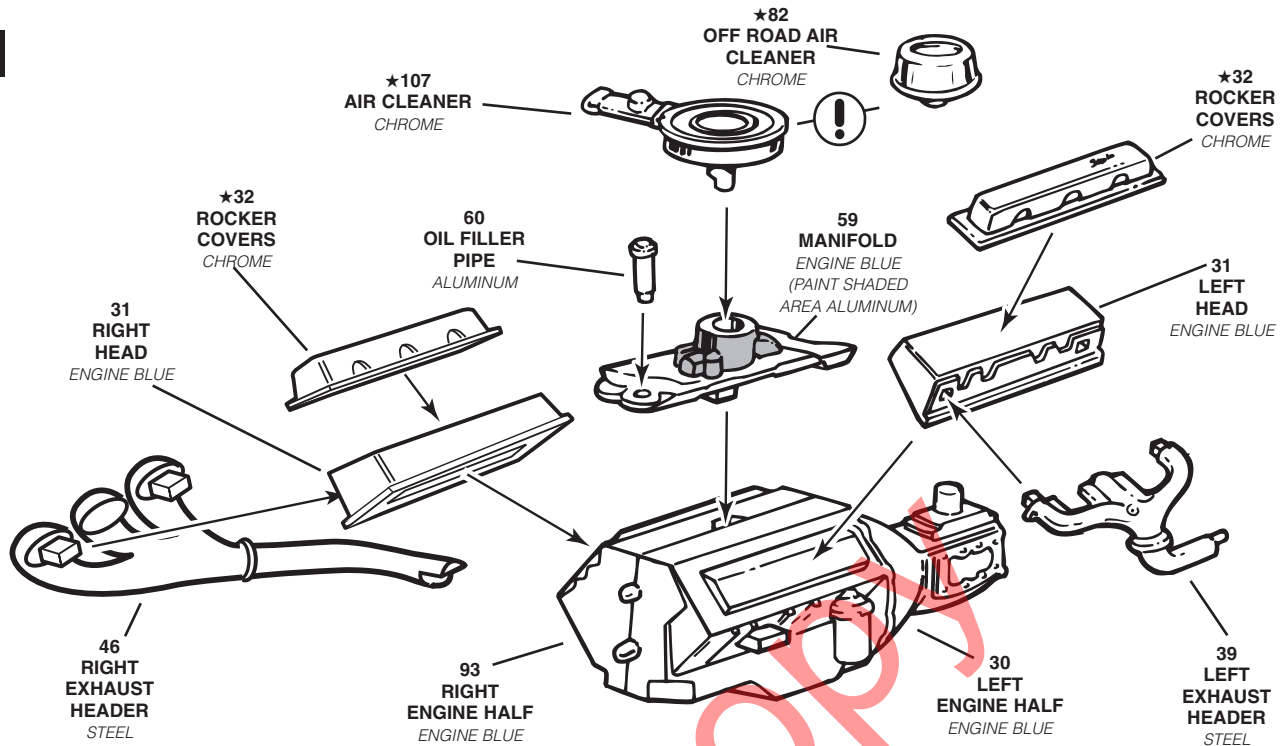
Be sure to include the plan number (85218010200), part number, description, your return address and phone number.

Visit our website: www.revell-monogram.com

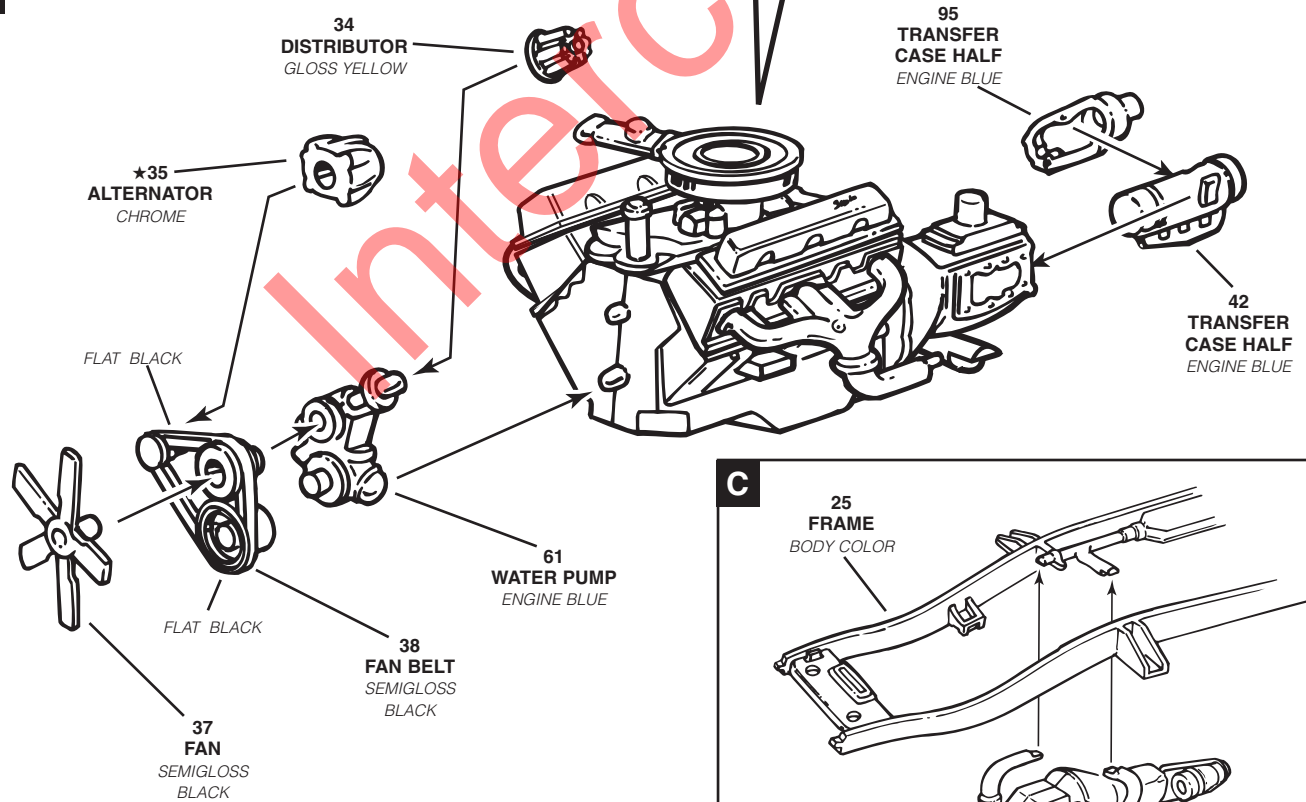
1

ENGINE ASSEMBLY

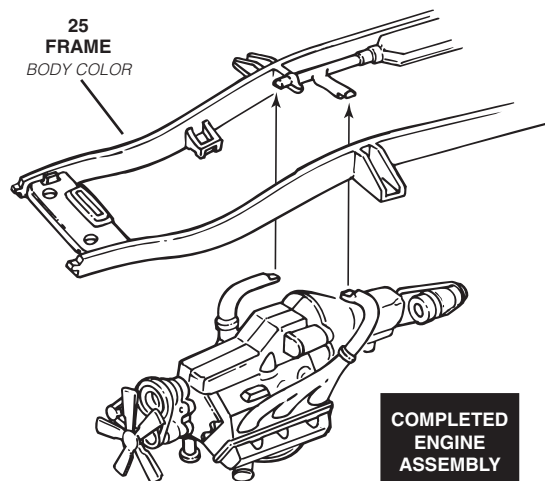
A



B



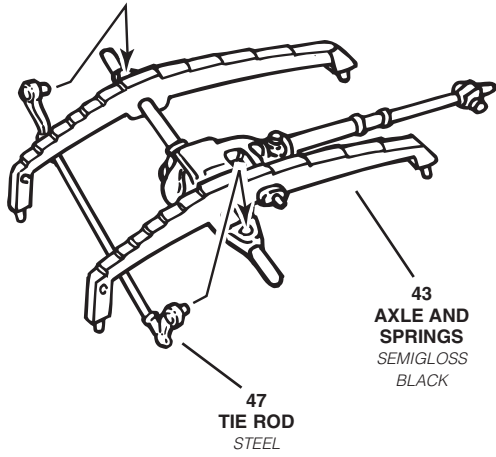
C



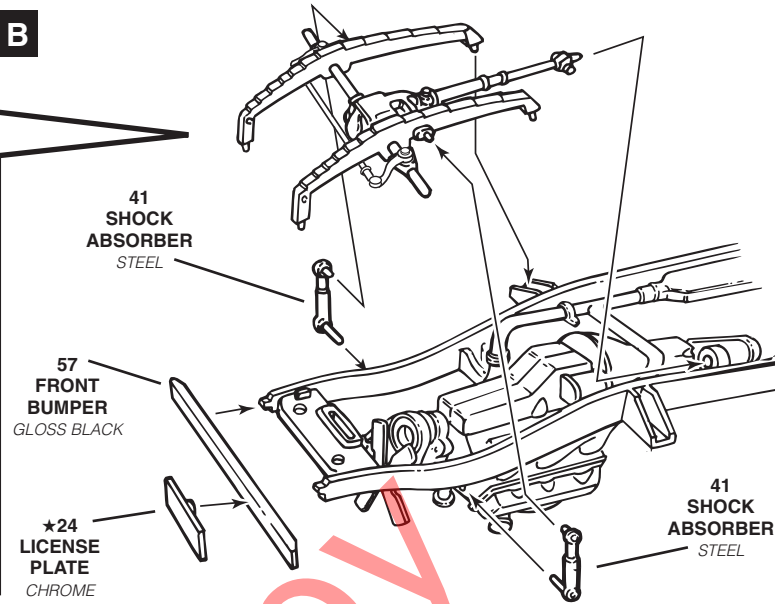
2

SUSPENSION ASSEMBLY

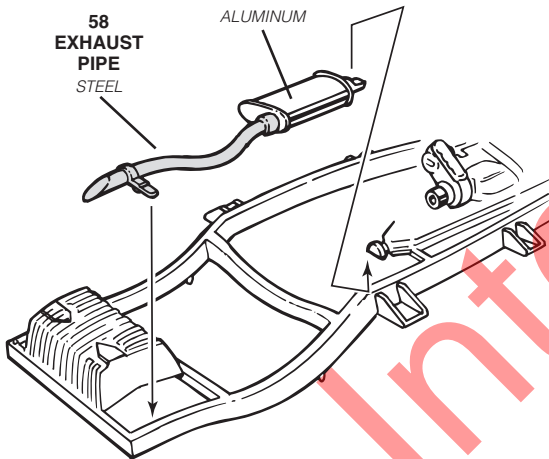
A



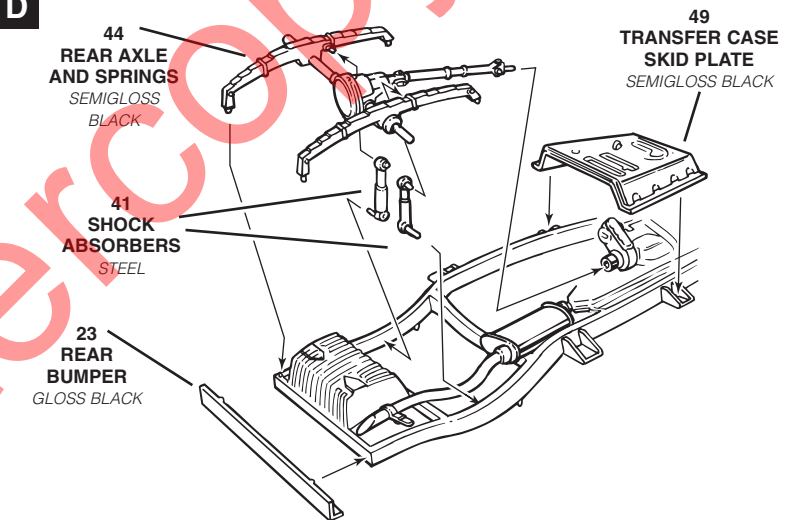
B



C

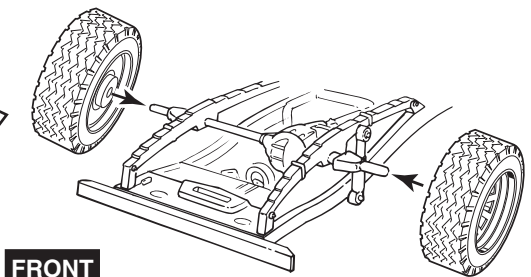
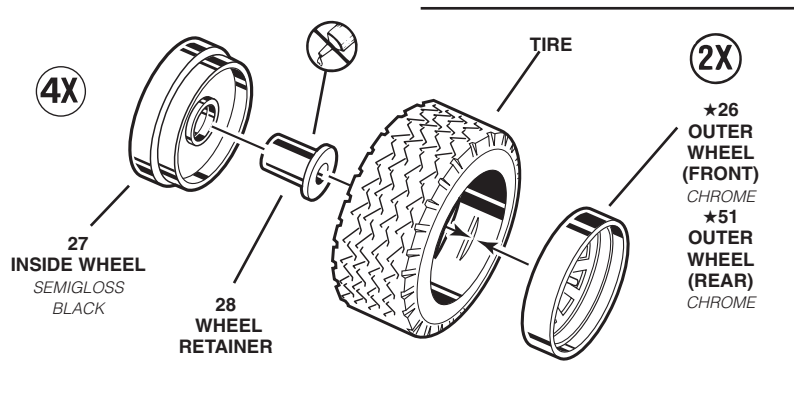


D

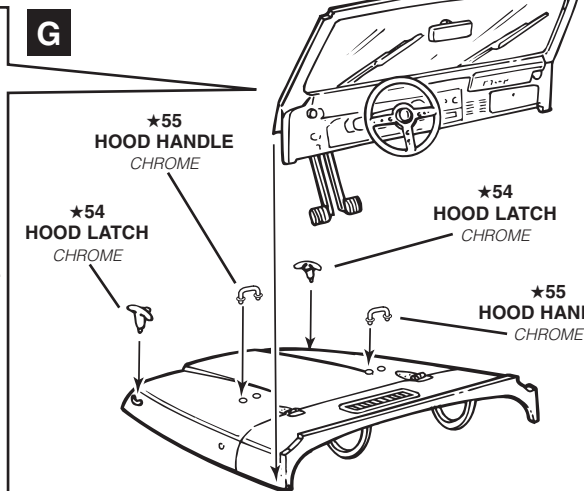
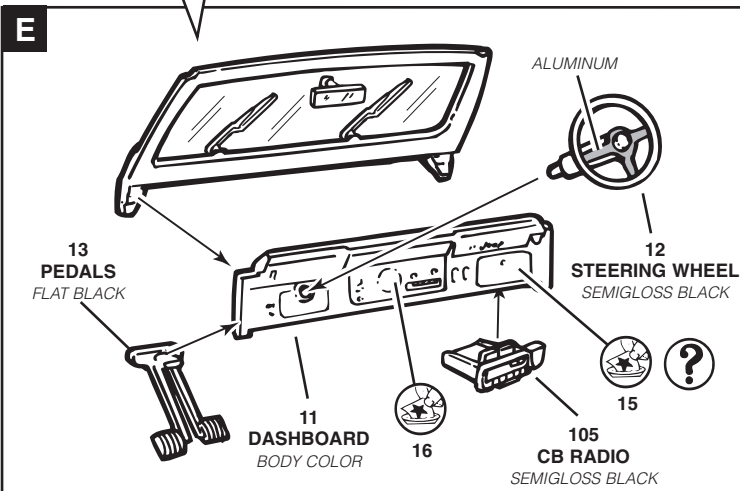
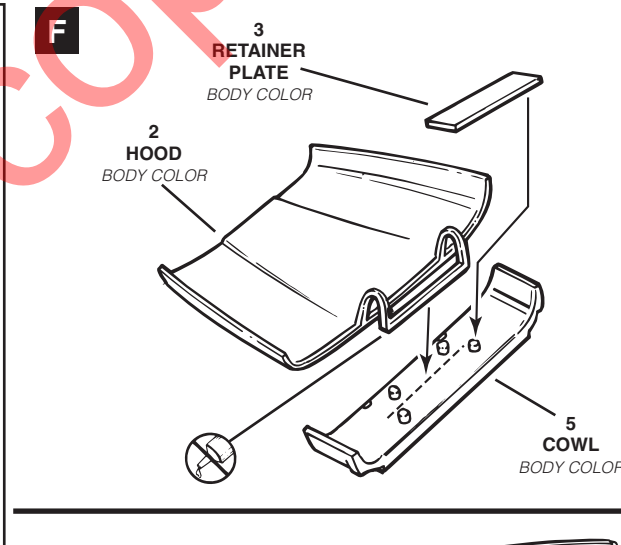
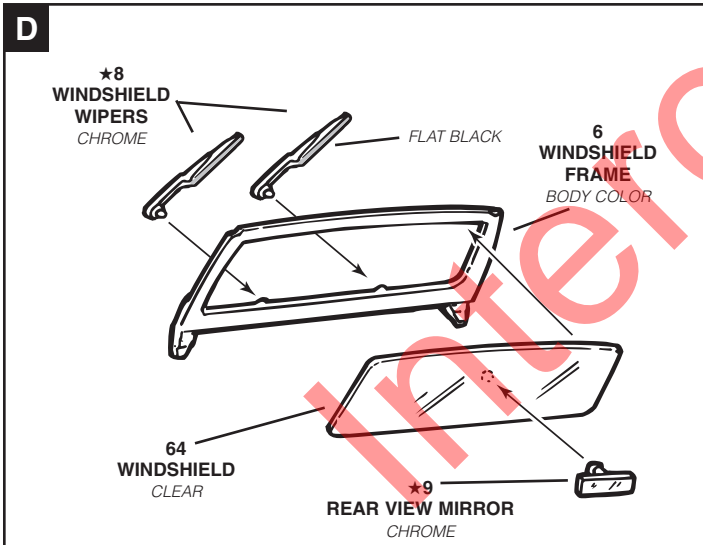
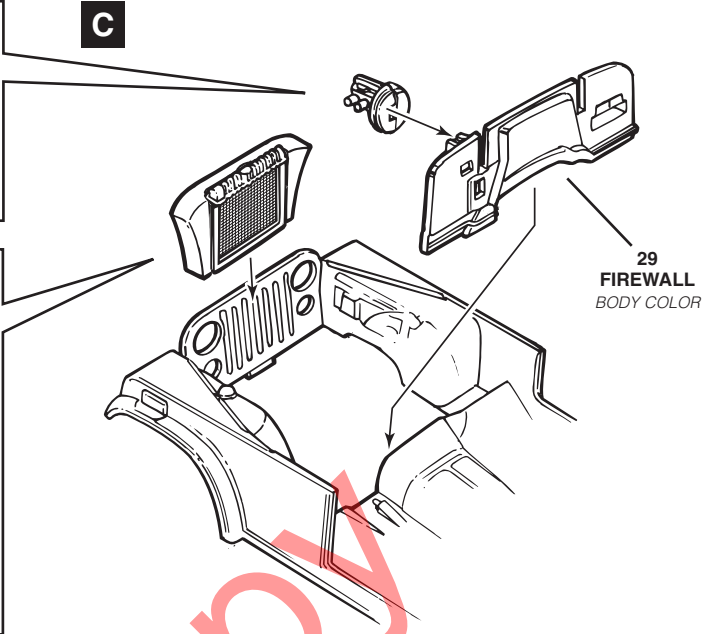
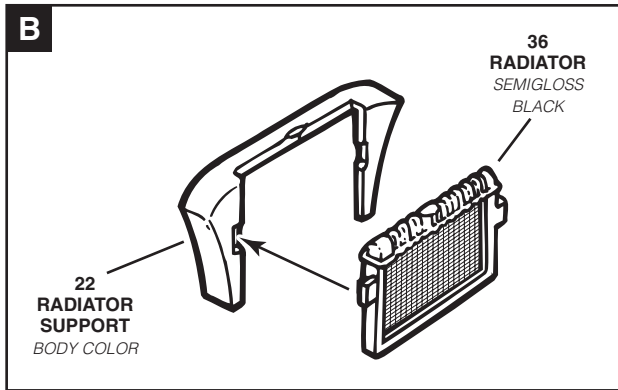
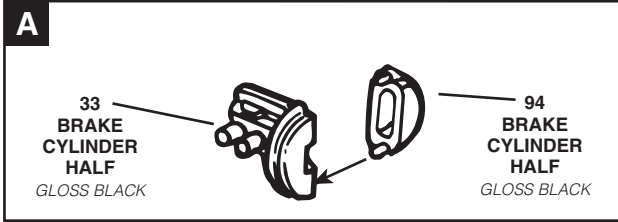


3

WHEEL ASSEMBLY

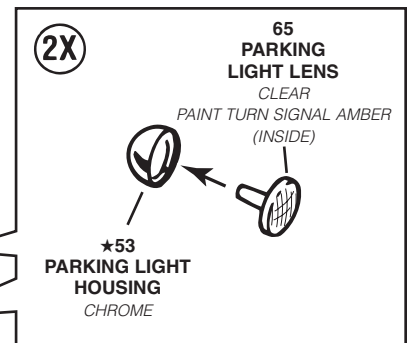
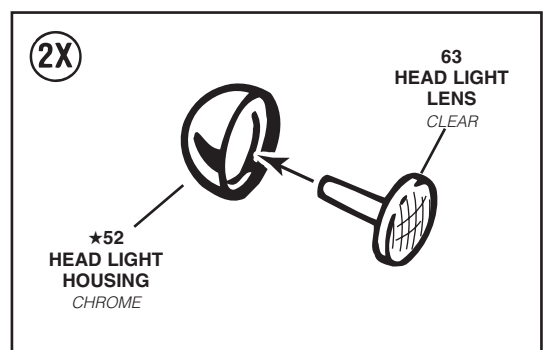
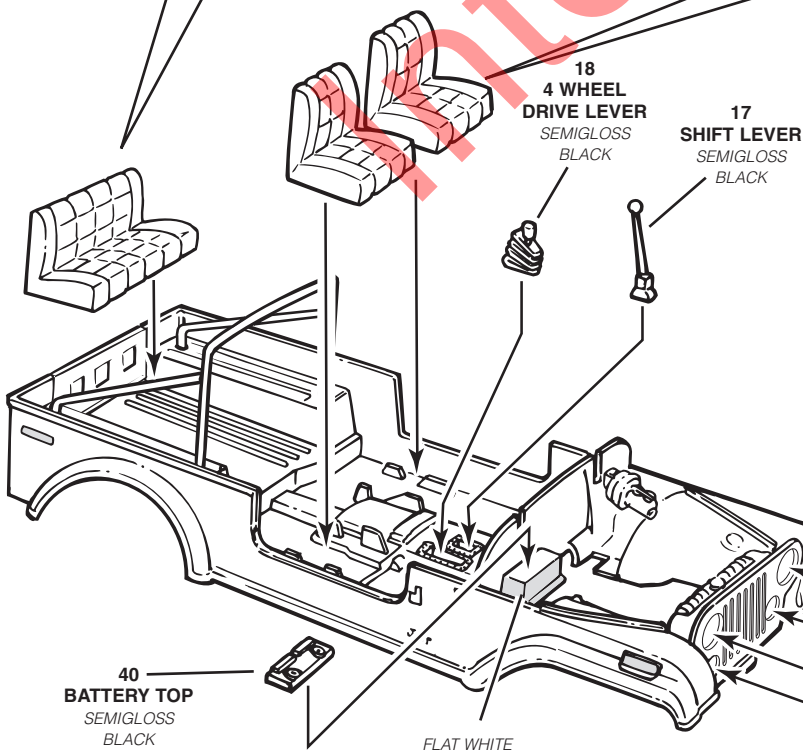
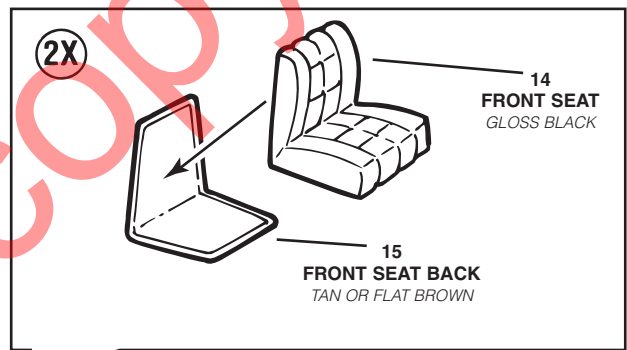
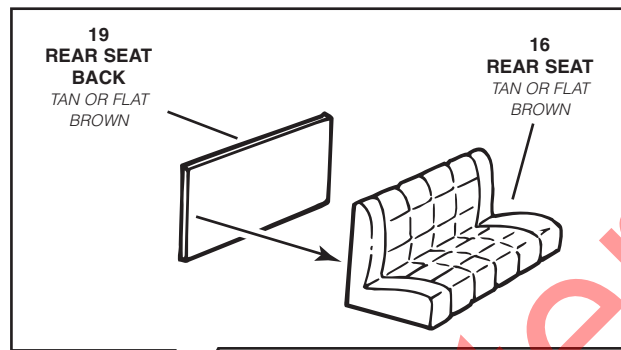
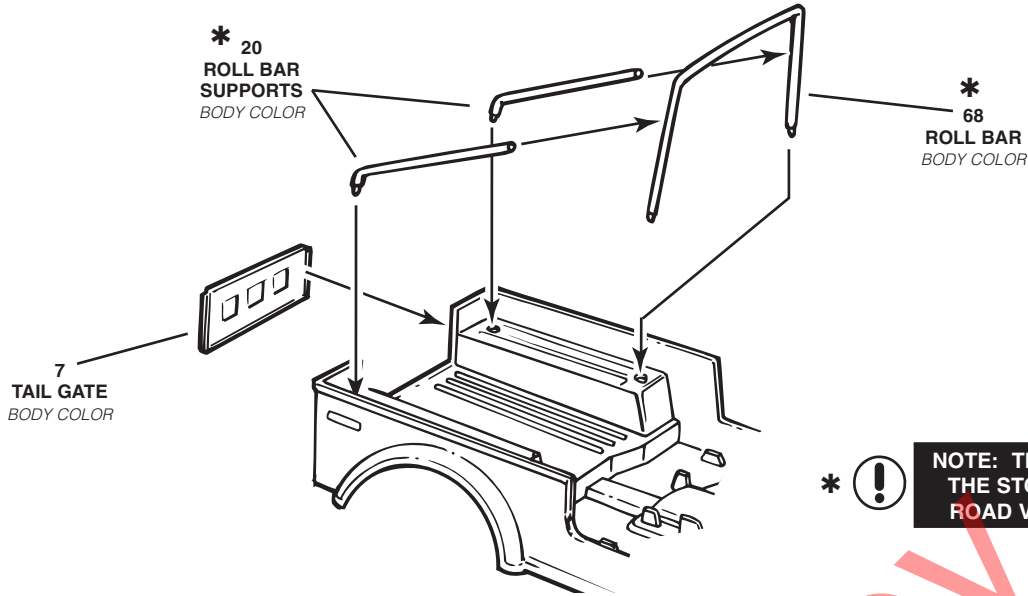


REPEAT FOR REAR WHEELS

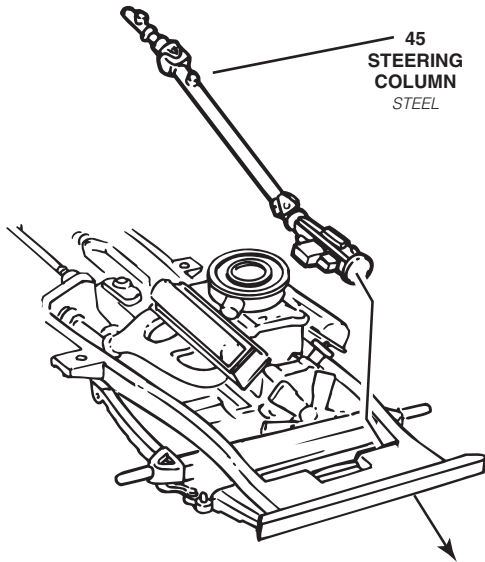


5

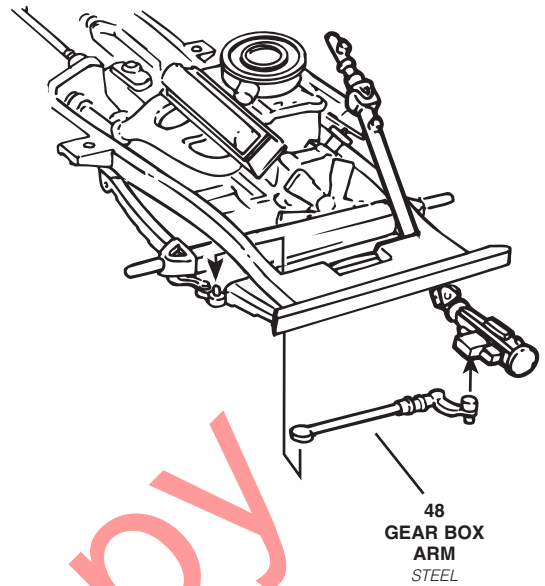
INTERIOR ASSEMBLY



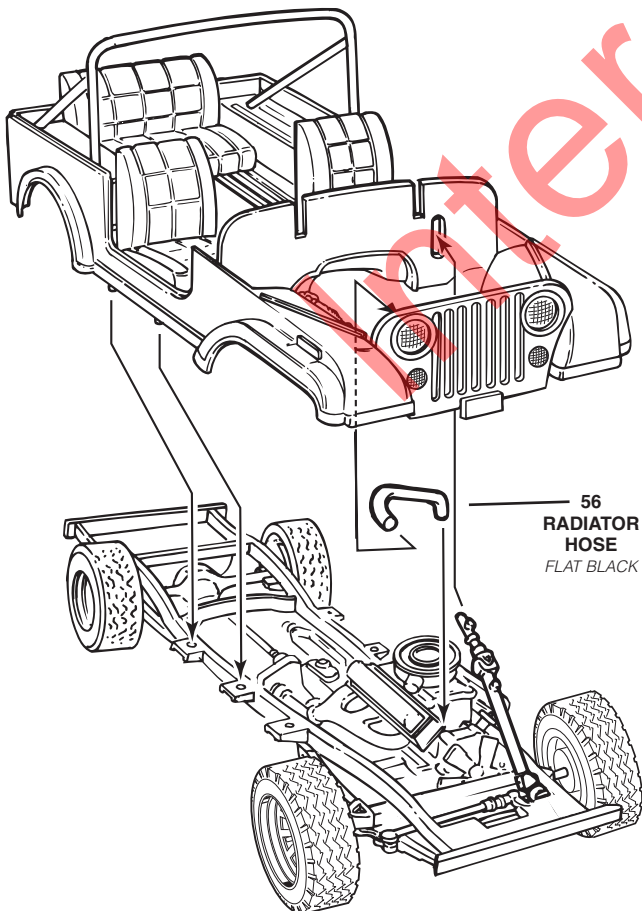
A



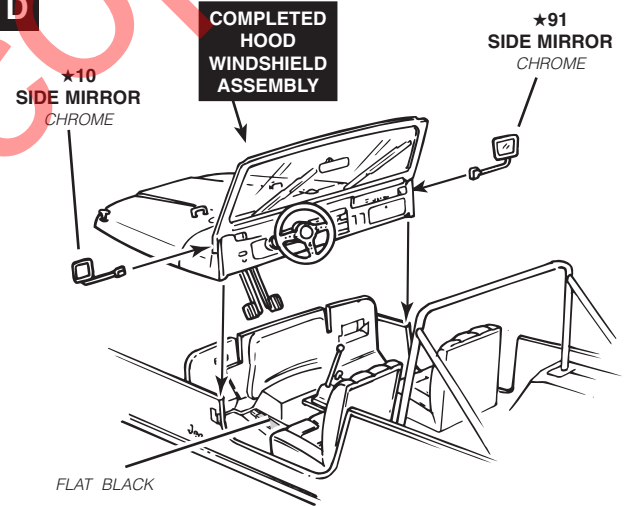
B



C

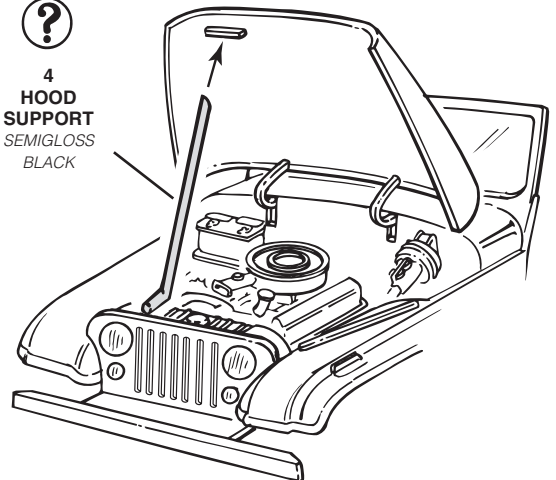


D



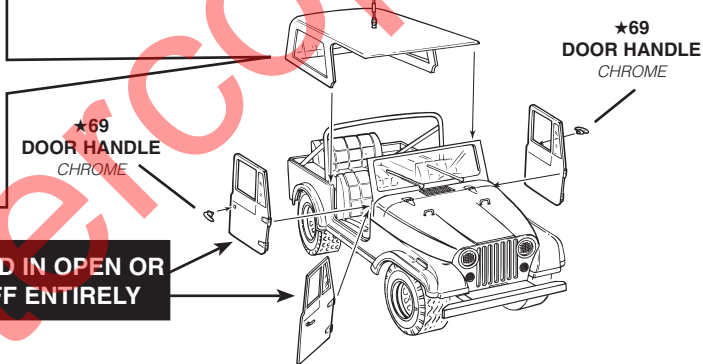
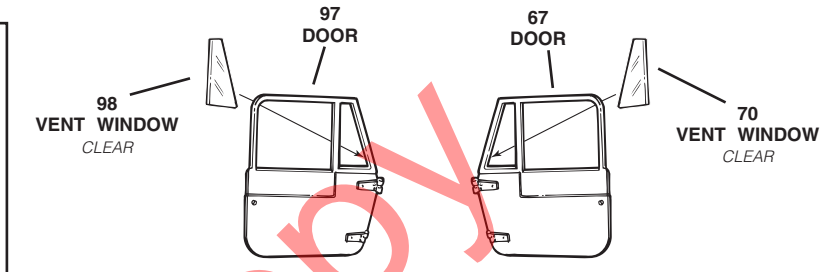
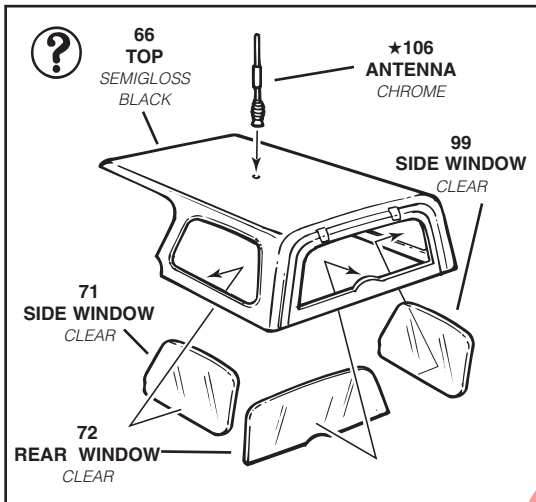
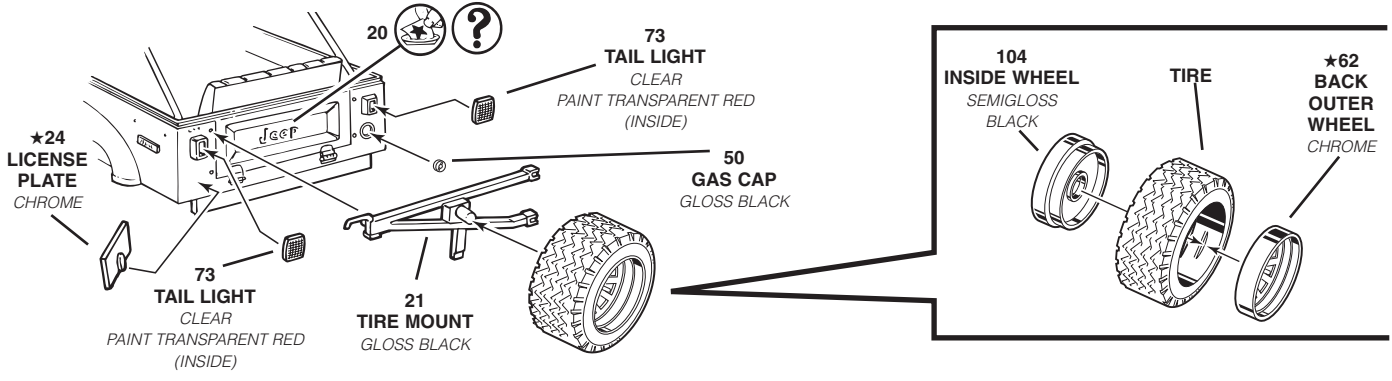
?

4
HOOD
SUPPORT
SEMIGLOSS
BLACK



7

FINAL STOCK ASSEMBLY

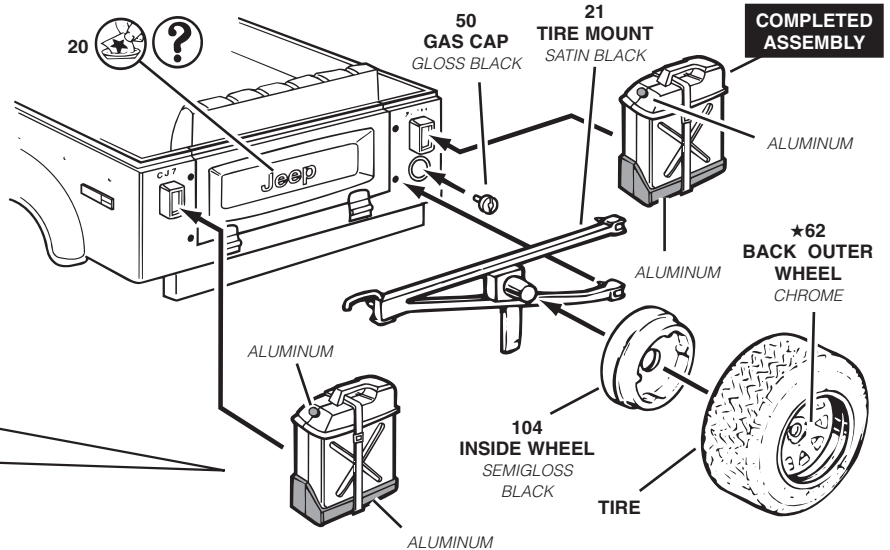
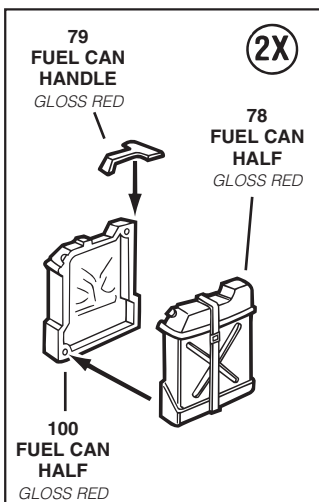


NOTE: DOORS MAY BE CEMENTED IN OPEN OR CLOSED POSITION OR LEFT OFF ENTIRELY

8

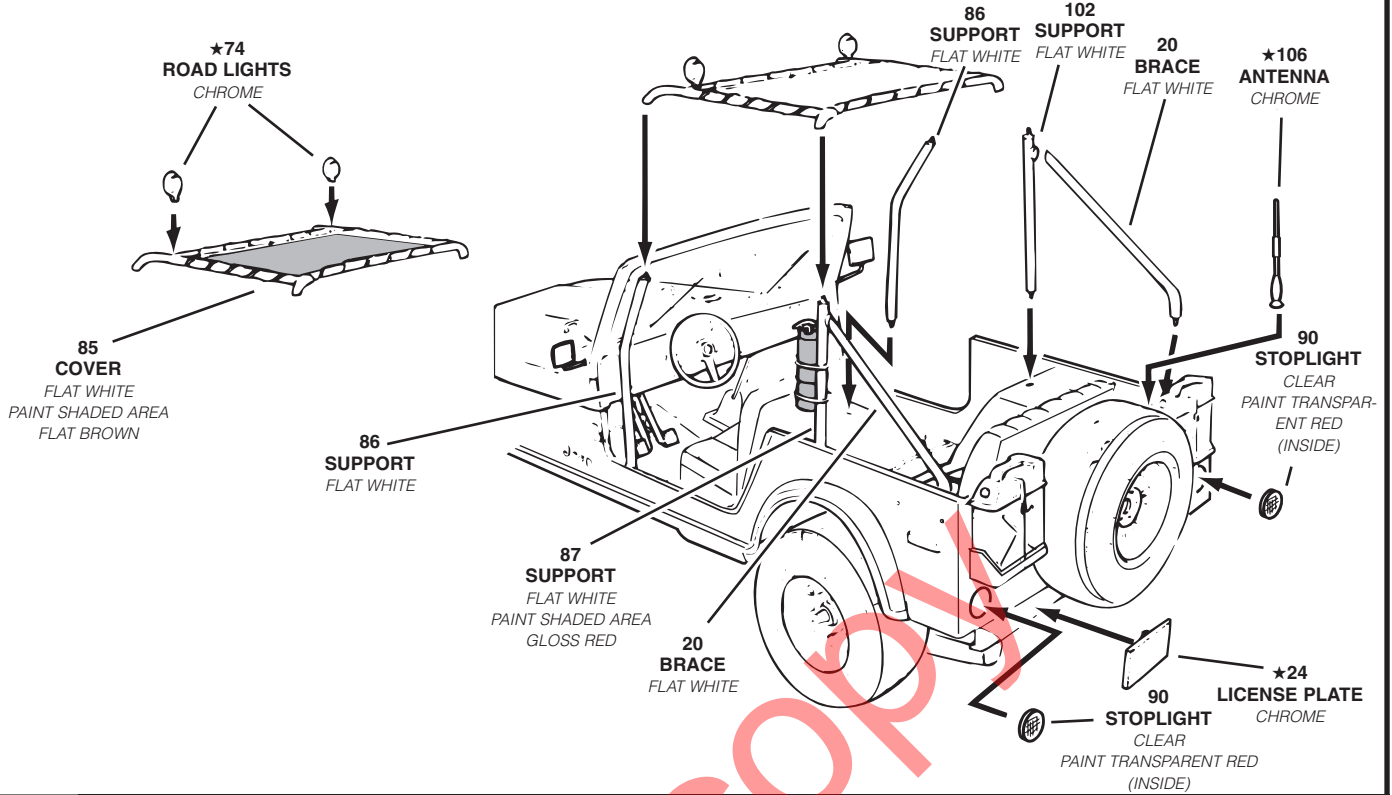


FINAL OFF ROAD ASSEMBLY



8

FINAL OFF ROAD ASSEMBLY CONTINUED



9

DECAL PLACEMENT

