



KIT 2376

85237600200

Corvette® C5-R™ 2001 Daytona 24 hour

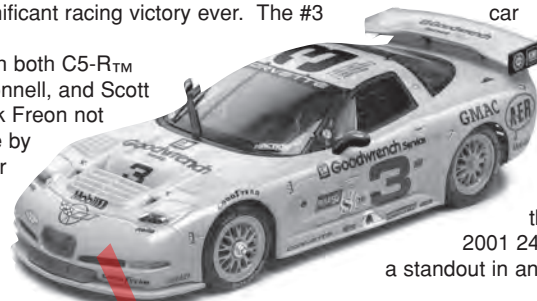
Dale Earnhardt, despite winning Twin 125 qualifying races, IROC races, Grand National Series races and even the Daytona 500 in 1998, still had some unfinished business at the World Center of Racing. Until the turn of the century, he had never entered the Rolex 24 Hours of Daytona.

The plan for Pratt & Miller Racing was to enter a pair of Goodwrench Service Plus® sponsored Chevrolet® Corvette® C5-R™ race cars, with road racing veterans Ron Fellows, Johnny O'Connell, Chris Kneifel and Frank Freon piloting the #2 car, along with Andy Pilgrim, Kelly Collins, Dale Earnhardt Jr, and Dale Earnhardt driving the #3 car.

Both Earnhardts handled themselves extremely well, considering they had never driven in an endurance race, nor raced in the rain. The Corvette® C5-R™ cars maintained a steady pace through the night, intermittent rain and poor visibility. The #2 Corvette® inherited the lead and kept it, when the top running sports prototype blew an engine on Sunday morning. Under gloomy skies and drizzle, the two yellow Corvette® race cars led a parade of GT and sports racers to the checkered flag: First overall and first in class, giving Corvette® the most significant racing victory ever. The #3 car finished fourth, after stopping for repairs during the night.

Later in the year, during "The 24 hours of LeMans", another battle of attrition was joined, with both C5-R™ machines out running or out lasting their competition. This day, it was Ron Fellows, Johnny O'Connell, and Scott Pruett driving the #63 car to 8th overall and first in GTS, with Andy Pilgrim, Kelly Collins and Frank Freon not far behind in the #64 car, second in GTS. As both Corvette® racers took the checkered flag, side by side on that damp dreary afternoon in France, it was most appropriate that they wore black fender flash with the famous number 3 to commemorate the team's fallen comrade, Dale Earnhardt.

Your Revell Corvette® C5-R™ depicts the GM Goodwrench Service Plus® entries in historic 39th running of the Rolex 24 Hours of Daytona, as well as their victory markings from the Hours of LeMans. The kit features accurate decals and easy glue assembly to make this replica collection.



the
2001 24
a standout in any



*** REPEAT SEVERAL TIMES**
* A REPETER PLUSIEURS FOIS



*** OPTIONAL PARTS**
* PIECES EN OPTION



*** DECAL**
* DECAL COMANIE



*** ALTERNATIVE ASSEMBLY**
* ENSEMBLAGE ALTERNATIVE



*** CEMENT TOGETHER**
* A COLLER



*** REMOVE AND THROW AWAY**
* A RETIRER ET JETER



*** DO NOT CEMENT**
* NE PAS COLLER

READ THIS BEFORE YOU BEGIN

- * Study the assembly drawings.
- * Each plastic part is identified by a number.
- * In the assembly drawings, some parts will be marked by a star (★) to indicate chrome plated plastic.
- * For better paint and decal adhesion, wash the plastic parts in a mild detergent solution. Rinse and let air dry.
- * Check the fit of each piece before cementing in place.
- * Use only cement for polystyrene plastic.
- * Scrape plating and paint from areas to be cemented.
- * Allow paint to dry thoroughly before handling parts.
- * Any unused parts may be discarded.

DECAL APPLICATION INSTRUCTIONS

1. Cut desired decal from sheet.
2. Dip decal in water for a few seconds.
3. Place wet decal on paper towel.
4. Wait until decal is movable on paper backing.
5. Place decal in position on model, face up and slide backing away.
6. Press out air bubbles with a soft damp cloth.
7. Milkiness that may appear is for better decal adhesion and will dry clear. Wipe away any excess adhesive.
8. Do not touch decal until fully dry.
9. Allow the decals 48 hours to dry before applying clear coat.

LIRE CE QUI SUIT AVANT DE COMMENCER

- * Etudier les schémas de montage.
- * Chaque pièce en plastique est identifiée par un numéro.
- * Sur les schémas de montage, certaines pièces sont marquées d'une étoile (★) pour indiquer qu'elles sont en plastique chromé.
- * Pour une meilleure prise de la peinture et des autocollants, laver les pièces en plastique avec une solution détergente peu concentrée. Les rincer et les laisser sécher à l'air.
- * Vérifier que chaque pièce s'ajuste bien avant de la coller en place.
- * N'utiliser que de la colle pour polystyrène.
- * Gratter les parties à coller pour enlever le chrome et la peinture.
- * Laisser la peinture bien sécher avant de manipuler les pièces.
- * Toute pièce inutilisée peut être jetée.

DIRECTIVES D'APPLICATION DES AUTOCOLLANTS

1. Découper l'autocollant désiré de la feuille.
2. Tremper l'autocollant dans de l'eau pendant quelques secondes.
3. Placer l'autocollant mouillé sur une serviette en papier.
4. Attendez que l'autocollant puisse être déplacé sur son support en papier.
5. Mettre l'autocollant en position sur le modèle face sur le dessus et faire glisser le support pour l'enlever.
6. Appuyer avec un chiffon doux humide pour éliminer les bulles d'air.
7. La substance laiteuse qui peut apparaître est destinée à améliorer l'adhésion de l'autocollant et devient incolore au séchage. Essuyer pour enlever tout excédent d'adhésif.
8. Ne pas toucher l'autocollant tant qu'il n'est pas bien sec.
9. Laisser l'autocollant sécher pendant 48 heures avant d'appliquer une couche transparente.

This optional paint guide is provided if you choose to detail paint your model.

Ce guide de peinture vous sera fourni si vous choisissez de peindre votre modèle en détail.

Aluminum	<i>Aluminum</i>
Satin Black	<i>Noir satiné</i>
Flat Black	<i>Noir mat</i>
Gloss Black	<i>Noir lustré</i>
Gloss Red	<i>Rouge lustré</i>
Gloss Yellow	<i>Jaune lustré</i>
Gloss White	<i>Blanc lustré</i>
Silver	<i>Argent</i>
Steel	<i>Acier</i>
Gunmetal	<i>Bronze</i>
Jet Exhaust	<i>Flux d'éjection</i>
Transparent Blue	<i>Bleu transparent</i>
Transparent Red	<i>Rouge transparent</i>
Turn Signal Amber	<i>Feu de virage amber</i>

If you have any questions or comments, call our hotline at: (800) 833-3570 or, please write to:

Revell-Monogram Consumer Service Department, 725 Landwehr, Northbrook, Illinois 60062

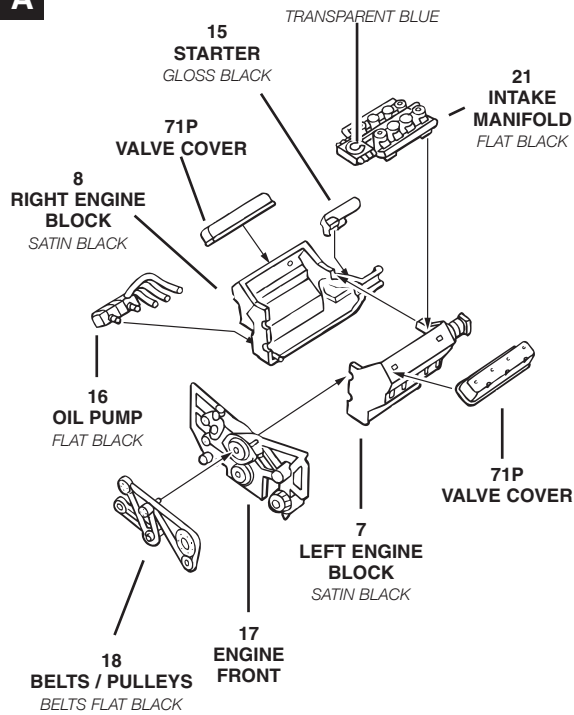
Be sure to include the plan number (85237600200), part number, description, your return address and phone number.

Visit our website: www.revell-monogram.com

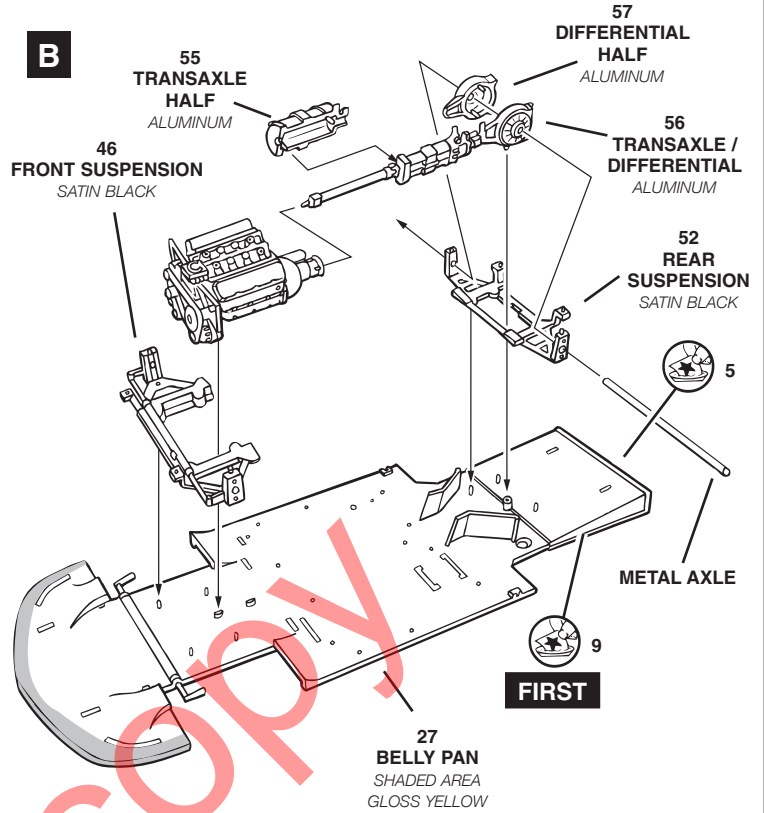
1

ENGINE ASSEMBLY

A



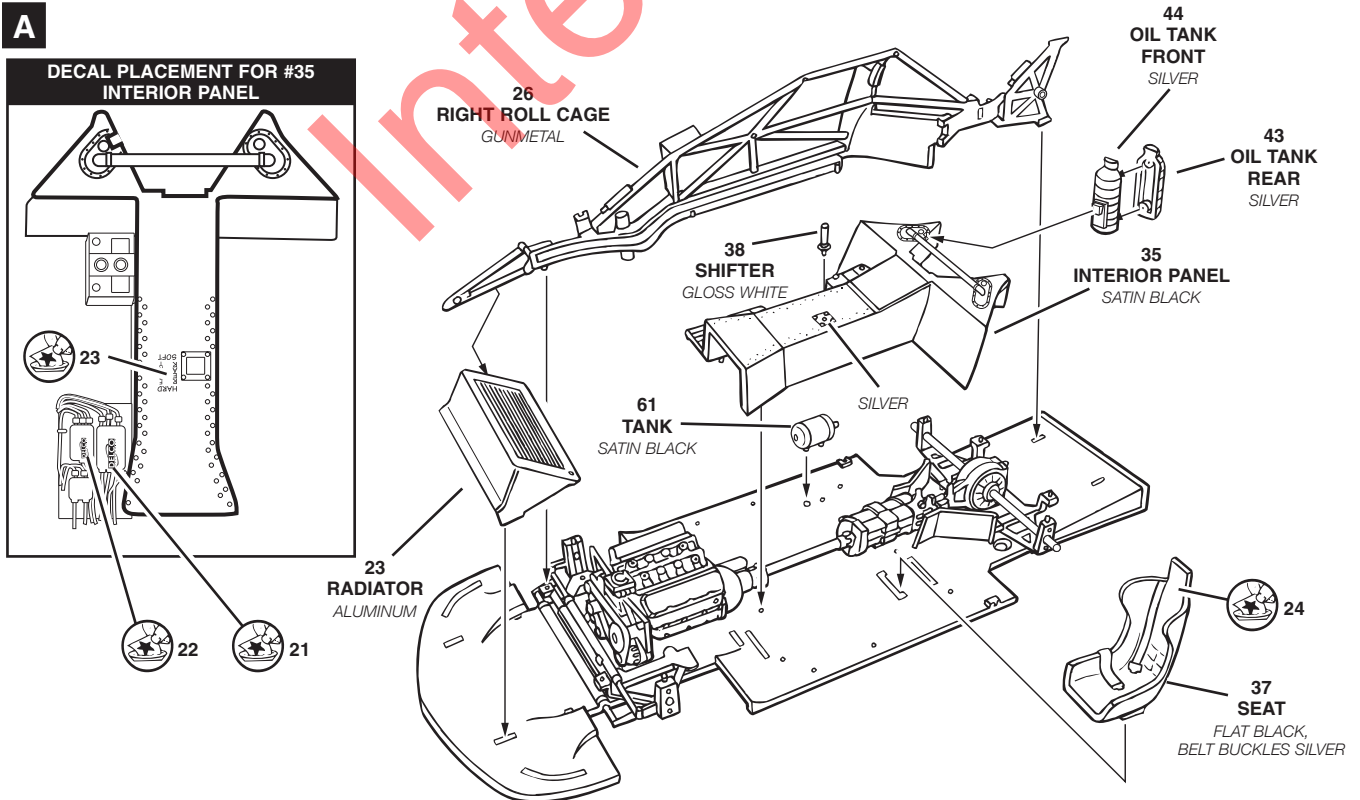
B



2

ROLL CAGE ASSEMBLY

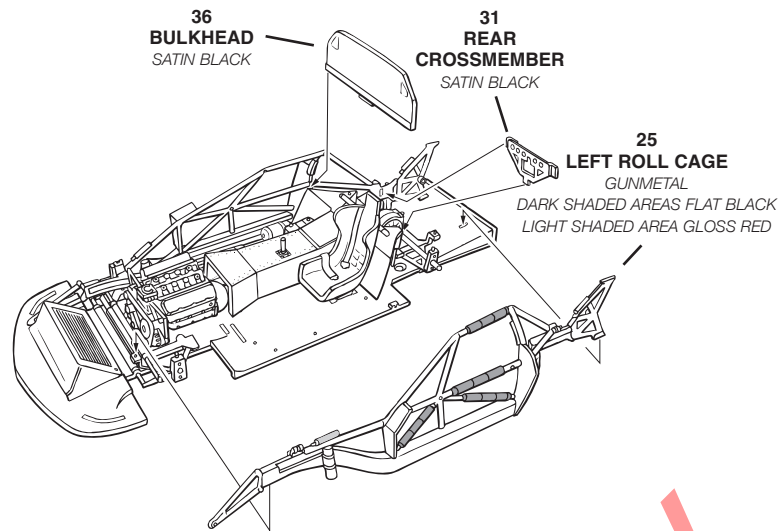
A



2

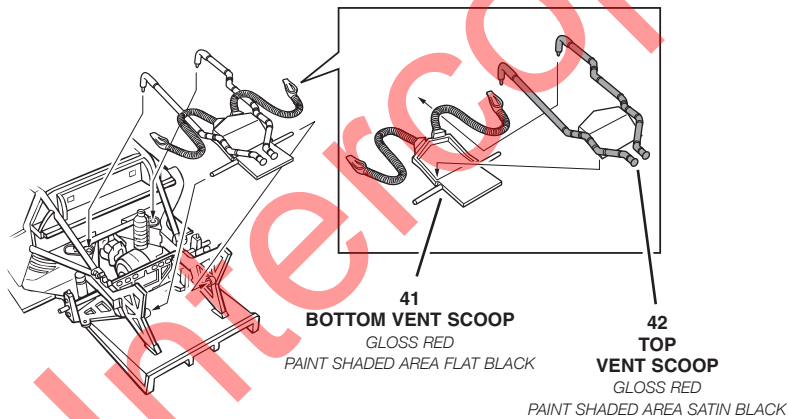
ROLL CAGE ASSEMBLY CONTINUED

B



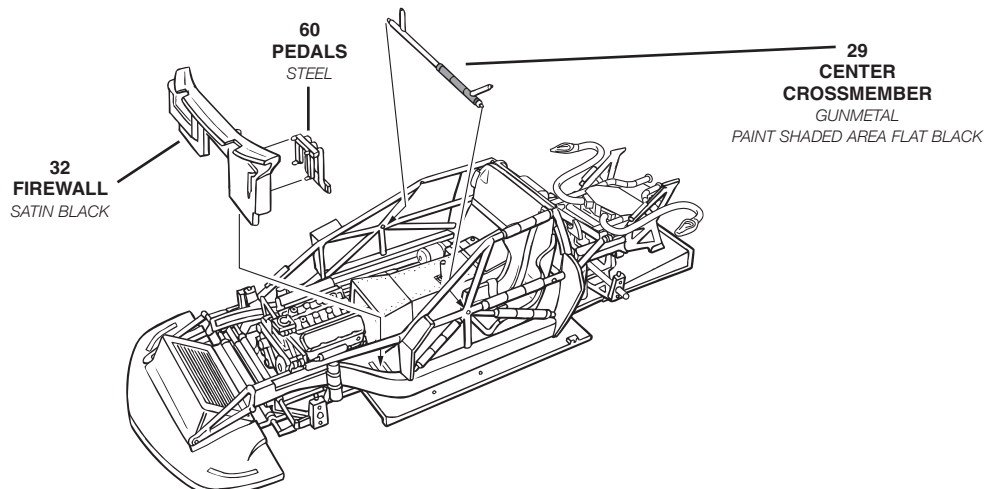
3

COOLING DUCT ASSEMBLY



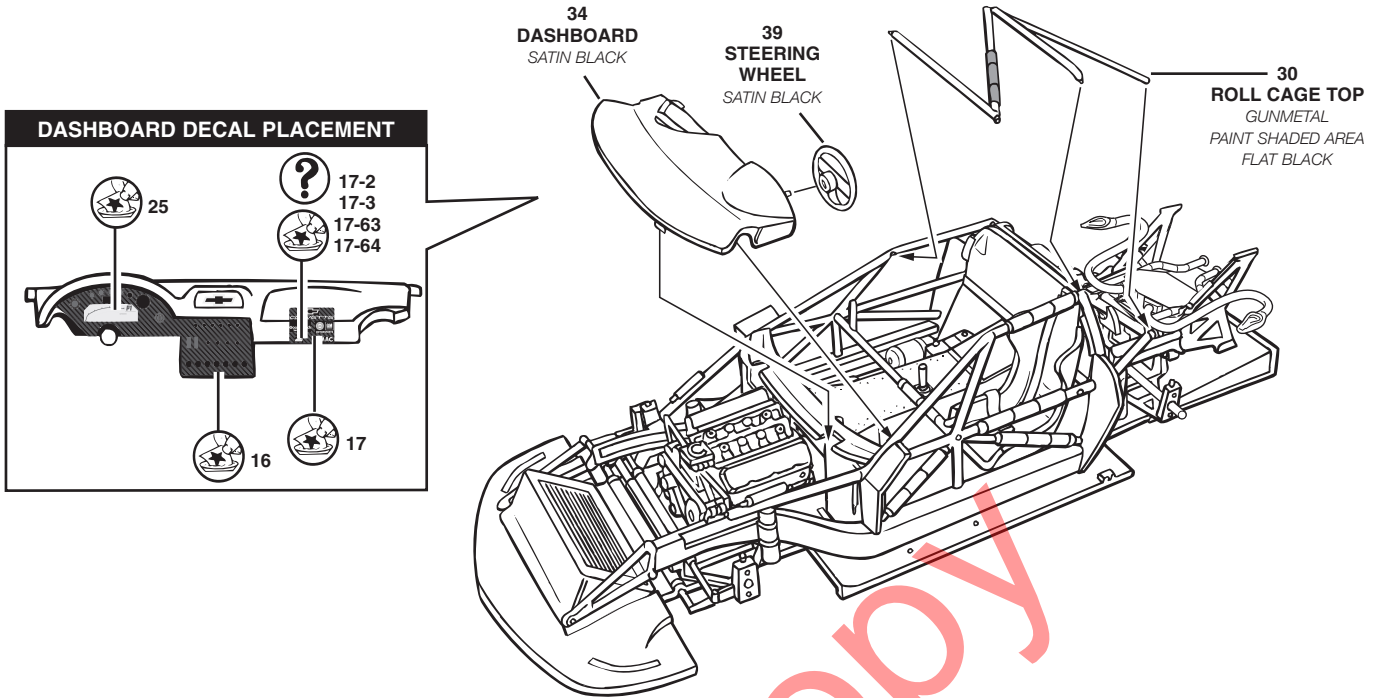
4

BRACE ASSEMBLY



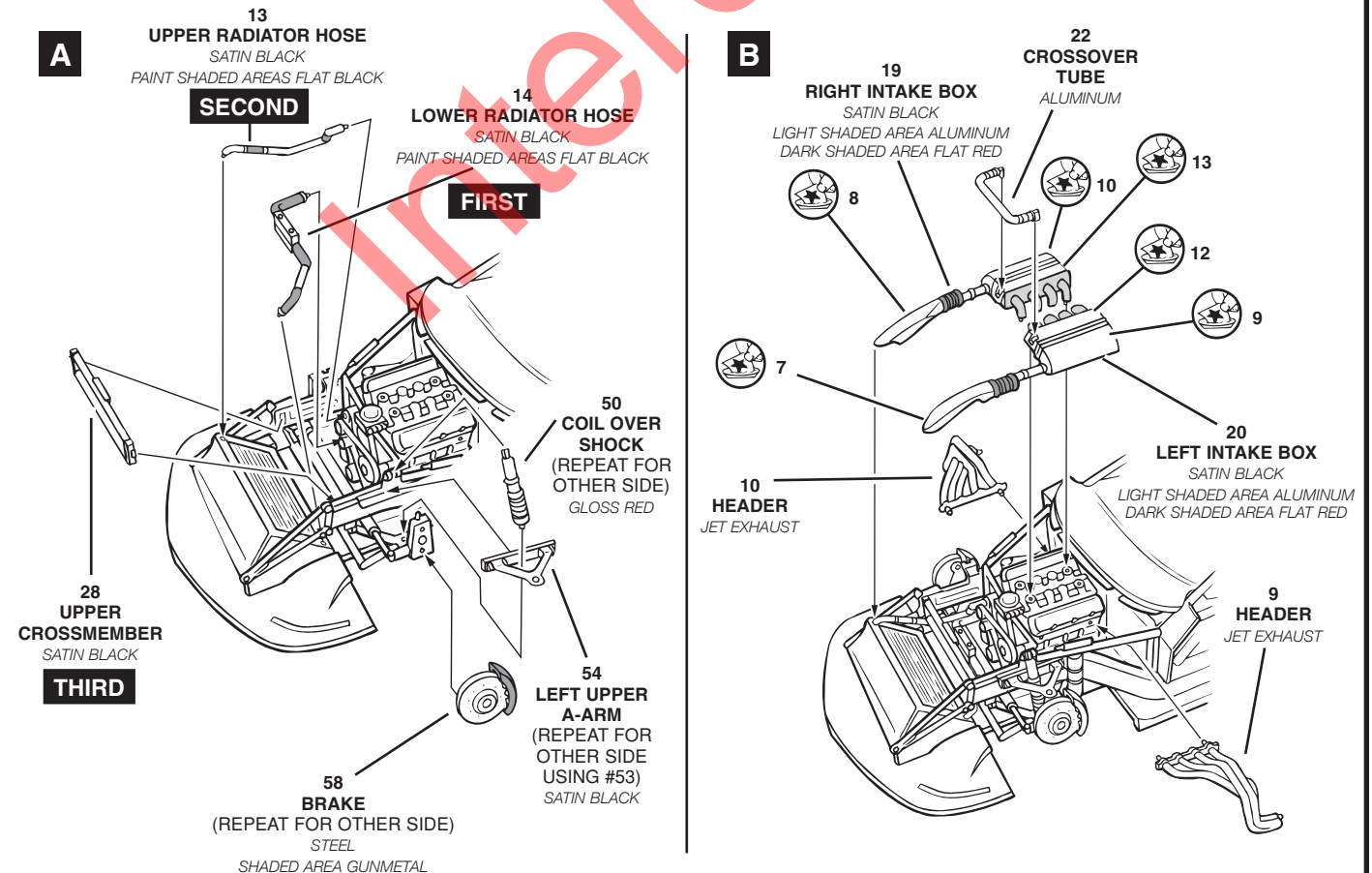
5

INTERIOR ASSEMBLY



6

SUSPENSION AND INTAKE ASSEMBLY



6

SUSPENSION AND INTAKE ASSEMBLY

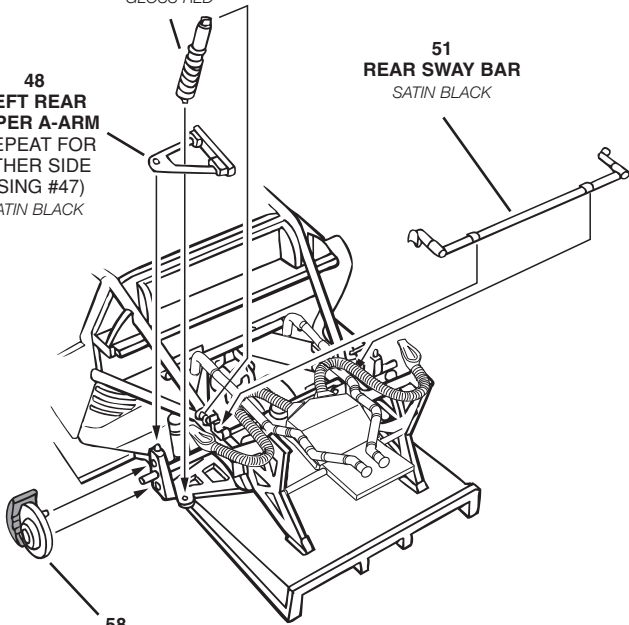
C

50
COIL OVER SHOCK
(REPEAT FOR OTHER SIDE)
GLOSS RED

48
LEFT REAR UPPER A-ARM
(REPEAT FOR OTHER SIDE USING #47)
SATIN BLACK

51
REAR SWAY BAR
SATIN BLACK

58
BRAKE
(REPEAT FOR OTHER SIDE)
STEEL
SHADED AREA GUNMETAL

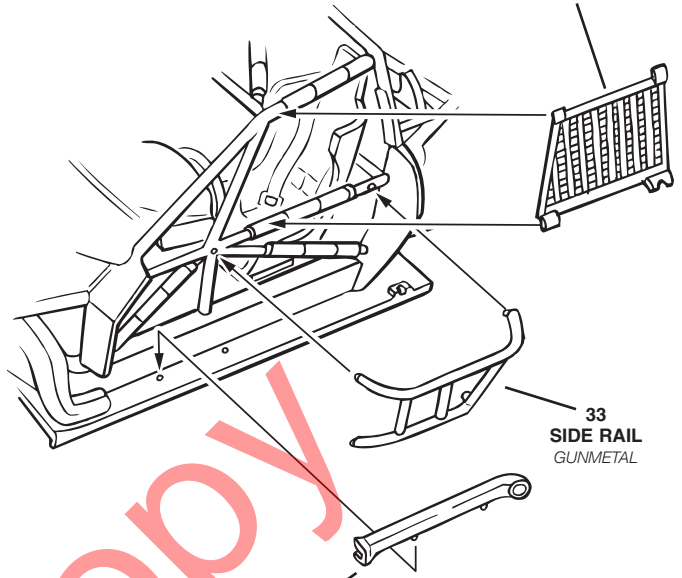


D

6
WINDOW NET
FLAT BLACK

33
SIDE RAIL
GUNMETAL

11
LEFT EXHAUST PIPE
(REPEAT FOR RIGHT SIDE USING PART #12)
JET EXHAUST



7

WHEEL ASSEMBLY

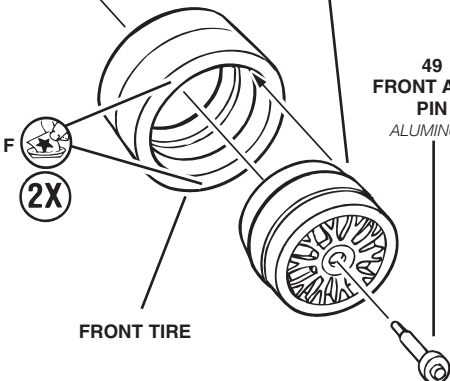
A

(2X)

69
FRONT WHEEL
ALUMINUM

49
FRONT AXLE PIN
ALUMINUM

FRONT TIRE

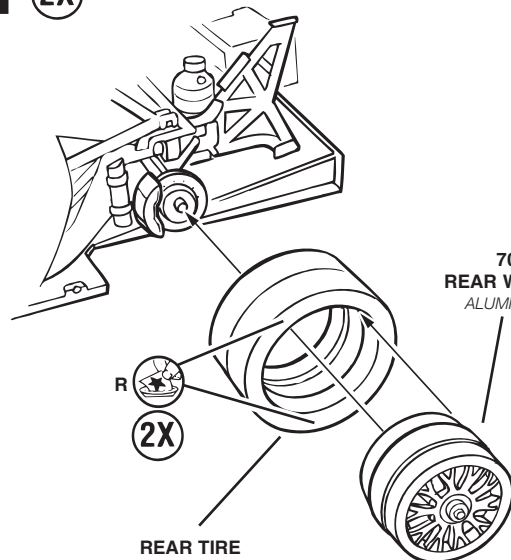


B

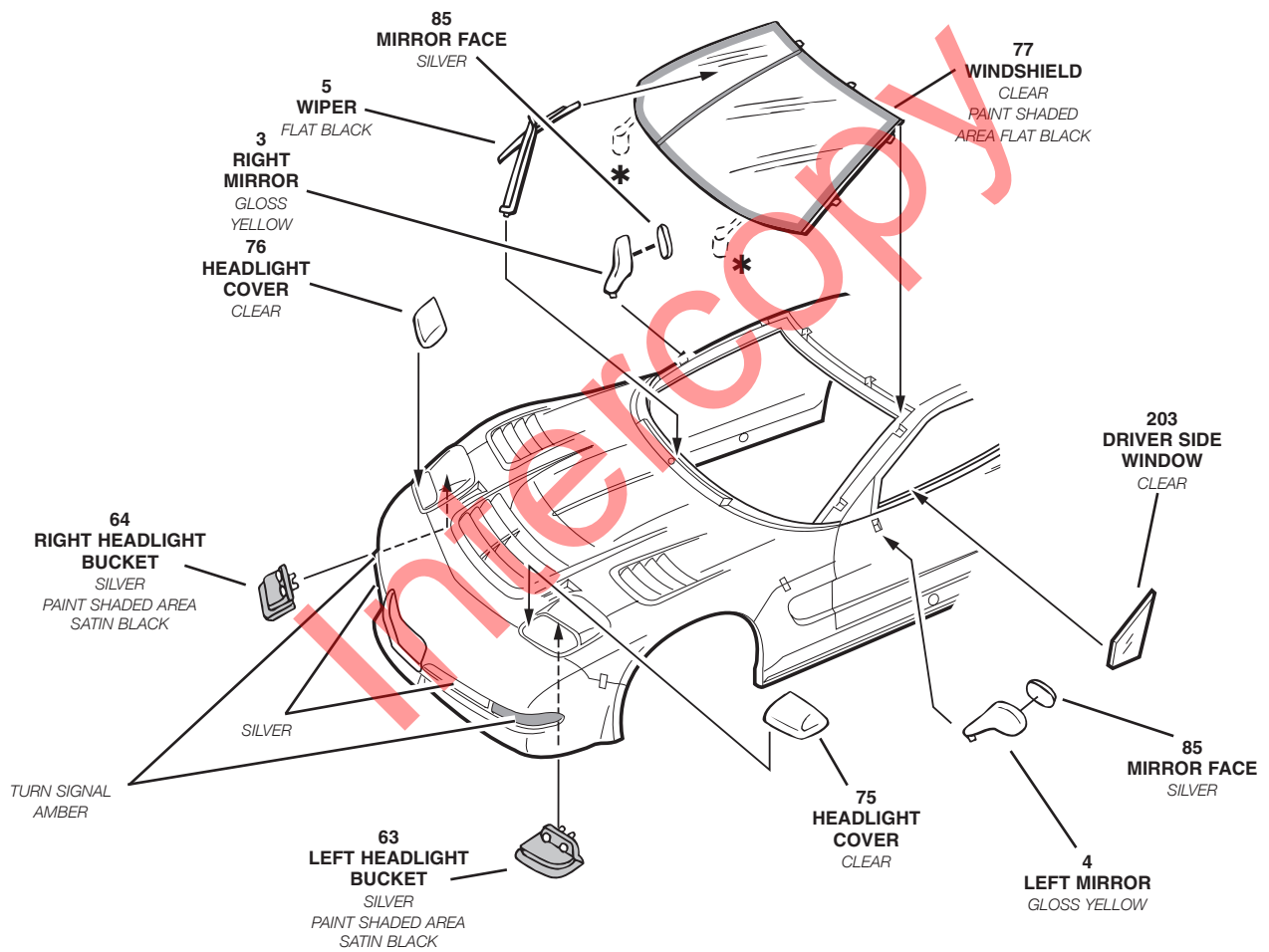
(2X)

70
REAR WHEEL
ALUMINUM

REAR TIRE



A



B



2
REAR SPOILER
GLOSS YELLOW

59
REAR SPOILER
SUPPORTS
GLOSS YELLOW

SILVER
(IN RECESSED AREA)

80
TAILLIGHTS
TRANSPARENT
RED

TRANSPARENT RED

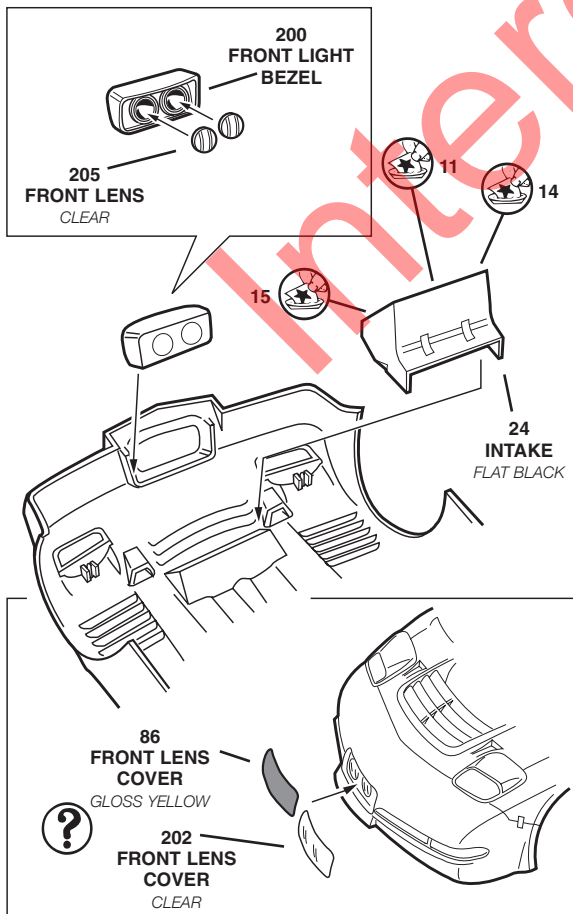
TRANSPARENT RED

78
REAR WINDOW
CLEAR
PAINT SHADED AREA
FLAT BLACK

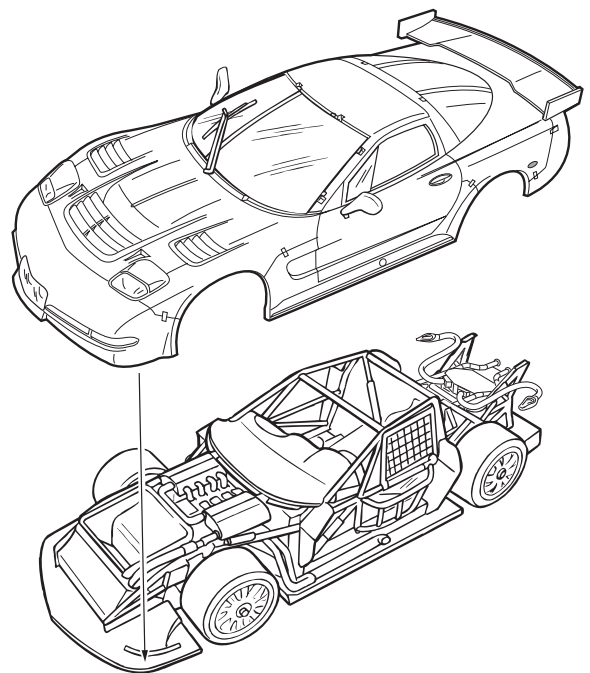
204
PASSENGER
SIDE WINDOW
CLEAR

SILVER
(REPEAT FOR OTHER SIDE)

C

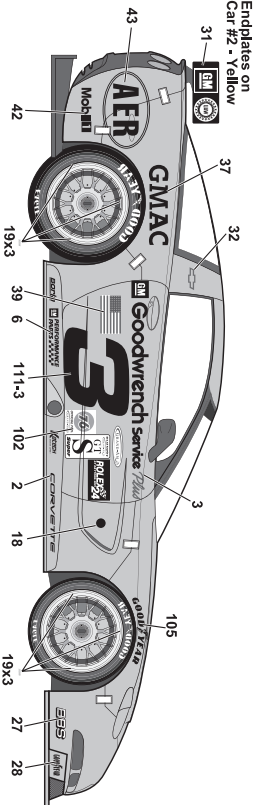
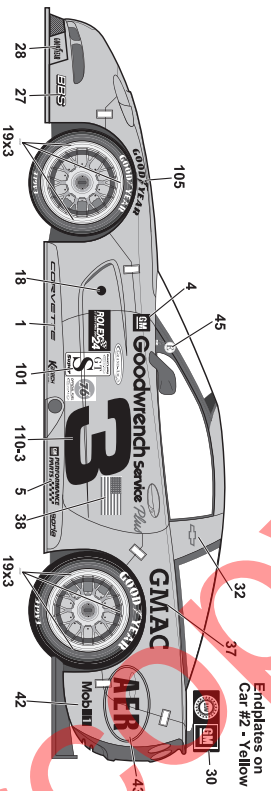
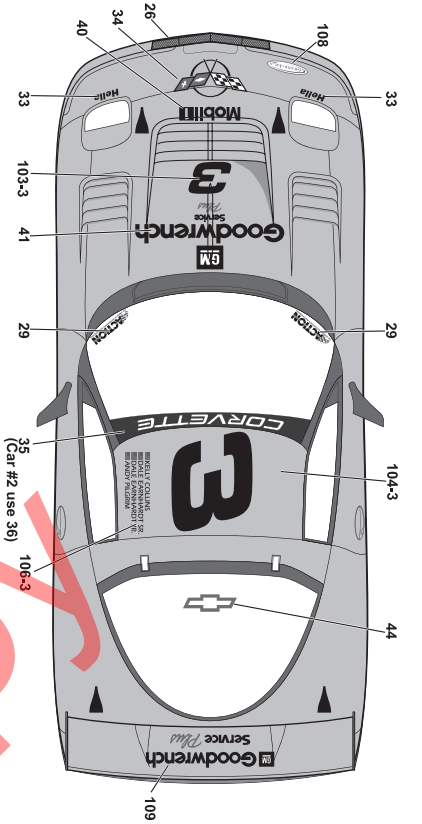


D



DECAL PLACEMENT

6

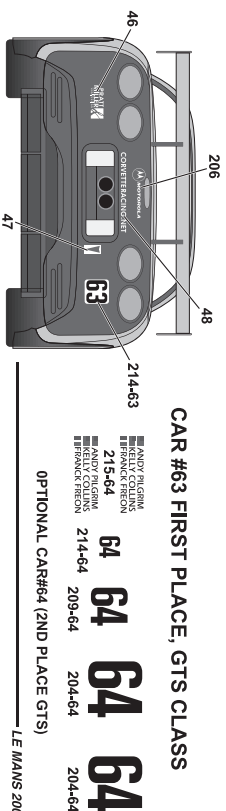
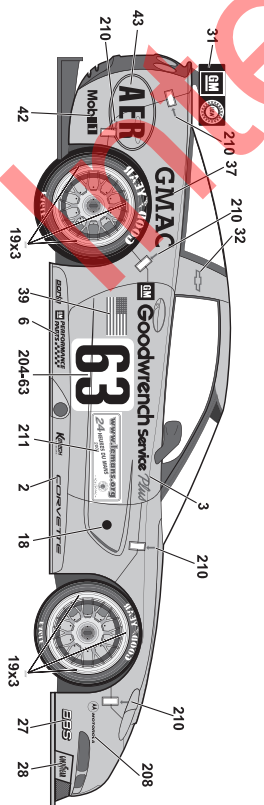
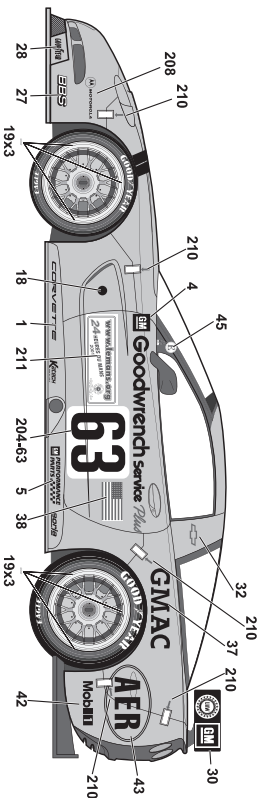
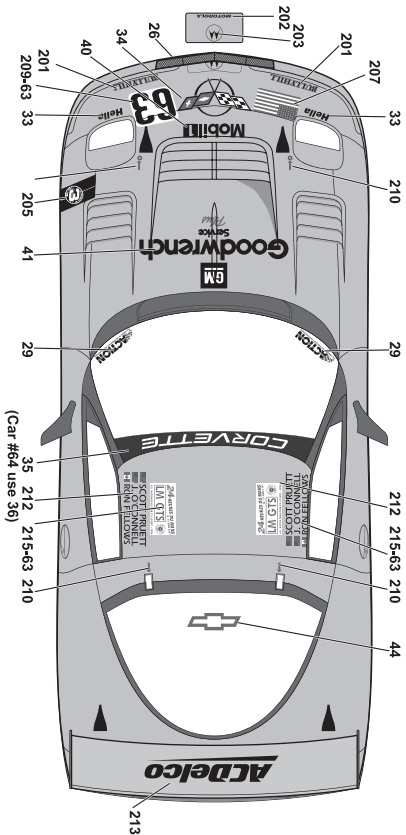
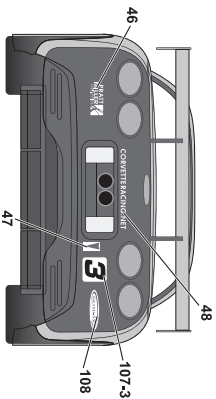


2 2 2

110-2
111-2
107-2
106-2
103-2
104-2

OPTIONAL CAR#2 (WINNER DAYTONA 24 HOURS)
DAYTONA 2001

NOTE: MIRRORS ARE
YELLOW ON THE #2 CAR



64 64 64 64

214-63
215-64
216-64
217-64
218-64
219-64
220-64

CAR #63 FIRST PLACE, GTS CLASS

ANDY RALPH
BRUCE FRENZ
ANDY RALPH
BRUCE FRENZ

OPTIONAL CAR#64 (2ND PLACE GTS)
LE MANS 2001