



KIT 2835

85283500200

'65 Mustang 2+2 Fastback

When the 1965 Mustang first appeared on the showroom floors, it was clear that Ford engineers had styled it to appeal to the widest cross-section of buyers possible. Produced initially in hardtop and convertible versions, the peak of Mustang design was reached in the 2+2 Fastback. The sporty, compact machine combined youthful exuberance and classic styling that made Mustang the best selling new car in automotive history.

The graceful contours of its front end were dominated by a grille-mounted, chrome running mustang that gave the car its name. The long hood, sculptured side panels, sloping fastback, and kicked-up rear end provided the sporty flair and elegance for which the

Mustang is remembered today.

Standard equipment on the Mustang consisted of a 120 horsepower six-cylinder engine, bucket seats, floor mounted 3-speed transmission, sports steering wheel, full wheel covers and more. Select sports options included three V-8 engines developing up to 271 horsepower, front disc brakes, rally instrument package, and 4-speed transmission.

Your Revell kit of the Mustang 2+2 Fastback has been faithfully reproduced using scale drawings and photographs provided from the Ford motor company.

Story was reprinted from the 1985 '65 Mustang 2+2 Kit #2713



*** REPEAT SEVERAL TIMES**
* A REPETER PLUSIEURS FOIS



*** OPTIONAL PARTS**
* PIECES EN OPTION



*** DECAL**
* DECAL COMANIE



*** ALTERNATIVE ASSEMBLY**
* ENSEMBLAGE ALTERNATIVE



*** CEMENT TOGETHER**
* A COLLER



*** REMOVE AND THROW AWAY**
* A RETIRER ET JETER



*** DO NOT CEMENT**
* NE PAS COLLER

READ THIS BEFORE YOU BEGIN

- * Study the assembly drawings.
- * Each plastic part is identified by a number.
- * In the assembly drawings, some parts will be marked by a star (★) to indicate chrome plated plastic.
- * For better paint and decal adhesion, wash the plastic parts in a mild detergent solution. Rinse and let air dry.
- * Check the fit of each piece before cementing in place.
- * Use only cement for polystyrene plastic.
- * Scrape plating and paint from areas to be cemented.
- * Allow paint to dry thoroughly before handling parts.
- * Any unused parts may be discarded.

DECAL APPLICATION INSTRUCTIONS

1. Cut desired decal from sheet.
2. Dip decal in water for a few seconds.
3. Place wet decal on paper towel.
4. Wait until decal is movable on paper backing.
5. Place decal in position on model, face up and slide backing away.
6. Press out air bubbles with a soft damp cloth.
7. Milkyness that may appear is for better decal adhesion and will dry clear. Wipe away any excess adhesive.
8. Do not touch decal until fully dry.
9. Allow the decals 48 hours to dry before applying clear coat.

NOTE: Decals are compatible with setting solutions or solvents.

LIRE CE QUI SUIV AVANT DE COMMENCER

- * Etudier les schémas de montage.
- * Chaque pièce en plastique est identifiée par un numéro.
- * Sur les schémas de montage, certaines pièces sont marquées d'une étoile (★) pour indiquer qu'elles sont en plastique chromé.
- * Pour une meilleure prise de la peinture et des autocollants, laver les pièces en plastique avec une solution détergente peu concentrée. Les rincer et les laisser sécher à l'air.
- * Vérifier que chaque pièce s'ajuste bien avant de la coller en place.
- * N'utiliser que de la colle pour polystyrène.
- * Gratter les parties à coller pour enlever le chrome et la peinture.
- * Laisser la peinture bien sécher avant de manipuler les pièces.
- * Toute pièce inutilisée peut être jetée.

DIRECTIVES D'APPLICATION DES AUTOCOLLANTS

1. Découper l'autocollant désiré de la feuille.
2. Tremper l'autocollant dans de l'eau pendant quelques secondes.
3. Placer l'autocollant mouillé sur une serviette en papier.
4. Attendez que l'autocollant puisse être déplacé sur son support en papier.
5. Mettre l'autocollant en position sur le modèle face sur le dessus et faire glisser le support pour l'enlever.
6. Appuyer avec un chiffon doux humide pour éliminer les bulles d'air.
7. La substance laiteuse qui peut apparaître est destinée à améliorer l'adhésion de l'autocollant et devient incolore au séchage. Essuyer pour enlever tout excédent d'adhésif.
8. Ne pas toucher l'autocollant tant qu'il n'est pas bien sec.
9. Laisser l'autocollant sécher pendant 48 heures avant d'appliquer une couche transparente.

REMARQUE: Les autocollants sont compatibles avec les solutions de fixation ou les solvants.

This optional paint guide is provided if you choose to detail paint your model.

Ce guide de peintures vous sera fourni si vous choisissez de peindre votre modèle en détail.

Aluminum	Aluminium
Flat Black	Noir mat
Gloss Black	Noir brillant
Gold	Or
Poppy Red	Rouge povet
Semigloss Black	Noir satiné
Satin White	Blanc satiné
Silver	Argent
Steel	Acier
Transparent Red	Rouge transparent
Turn Signal Amber	Feu clignotant de direction ambre
Wood	Bois

If you have any questions or comments, call our hotline at: **(800) 833-3570**
or, please write to:

Revell-Monogram Consumer Service Department, 725 Landwher Road, Northbrook, Illinois 60062

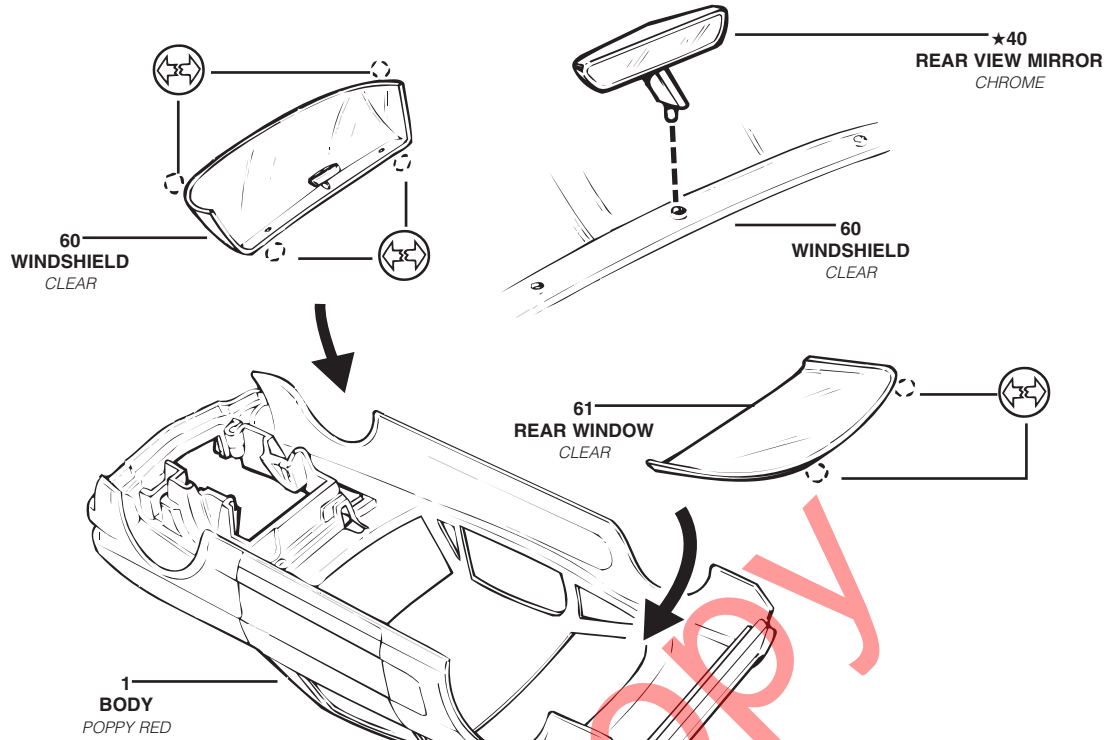
Be sure to include the plan number (85283500200), part number, description, your return address and phone number.

Visit our website: www.revellmonogram.com

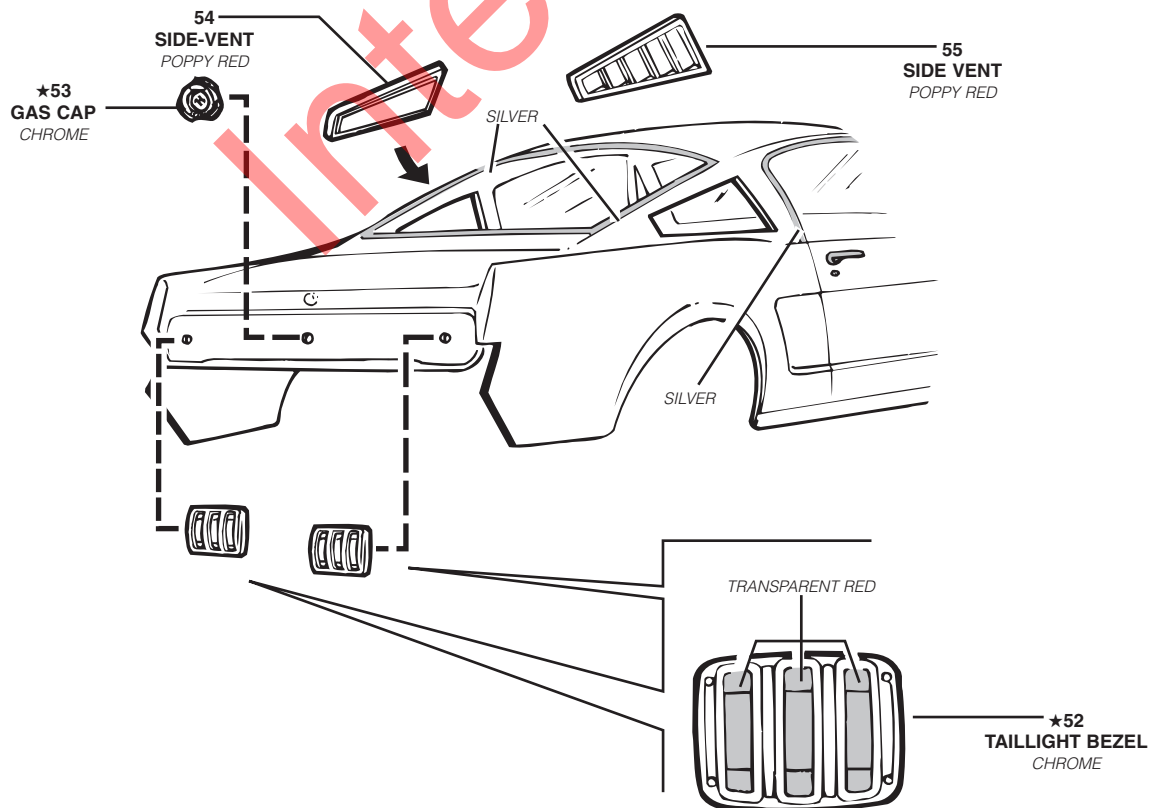
1

BODY ASSEMBLY

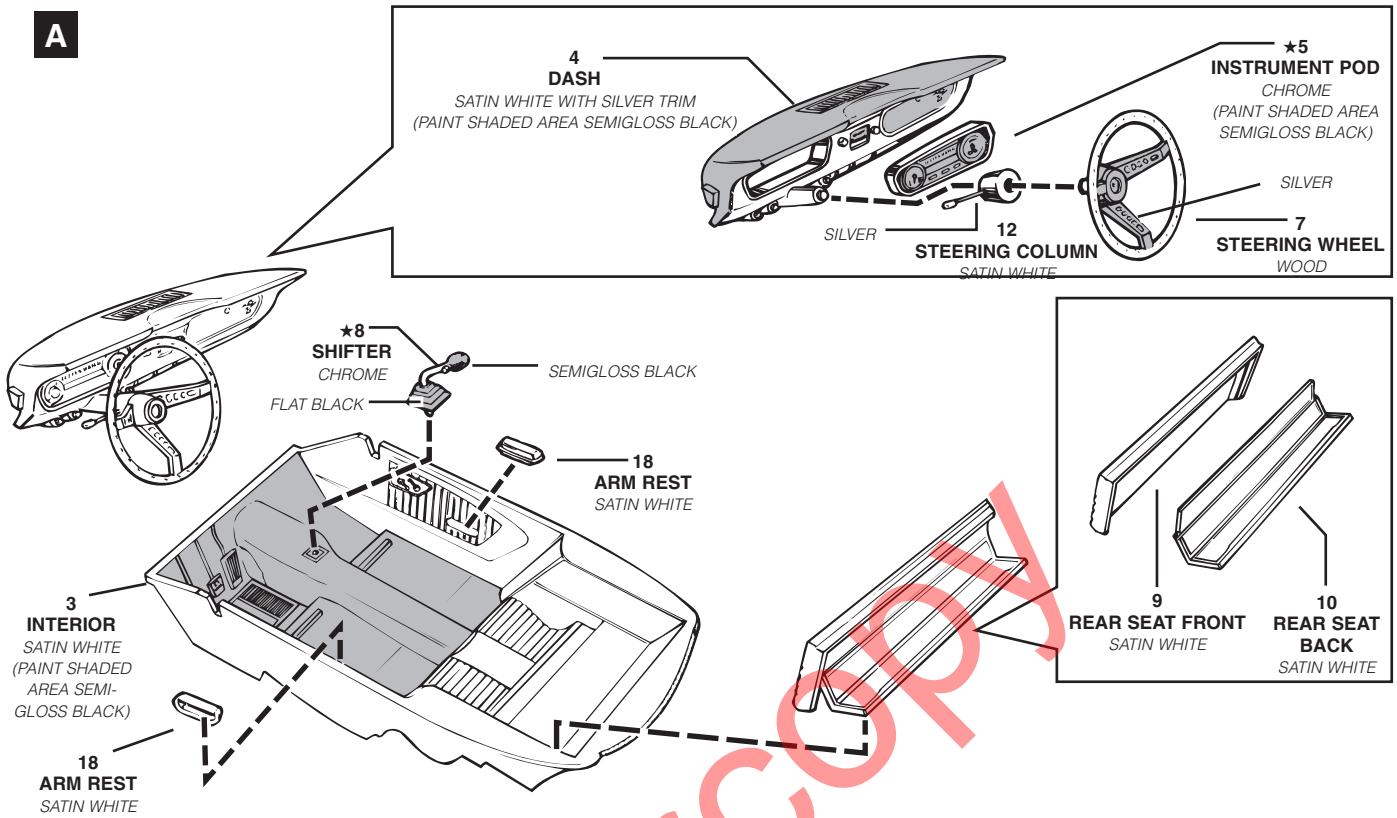
A



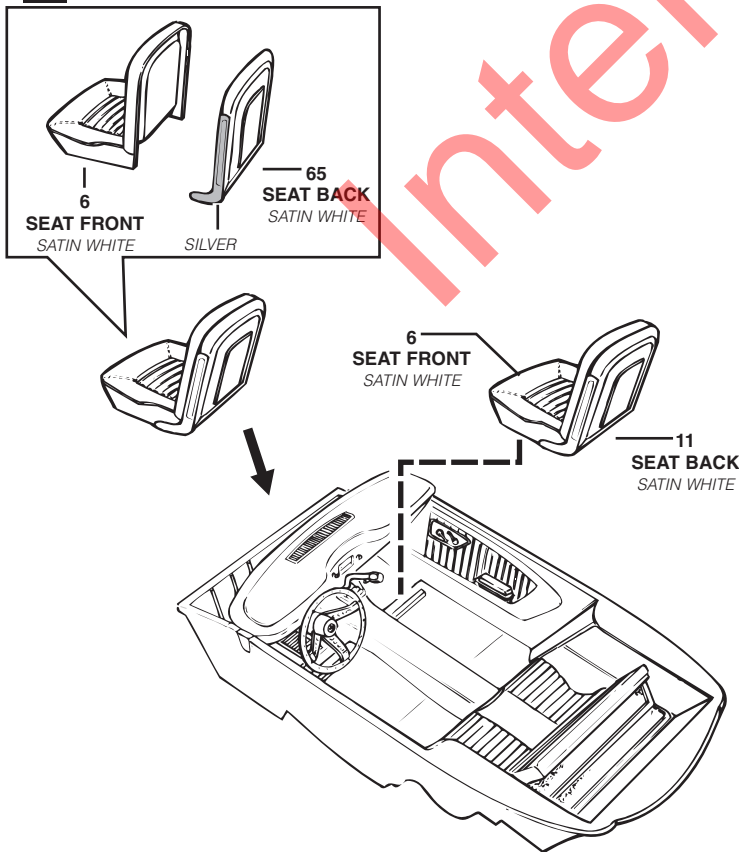
B



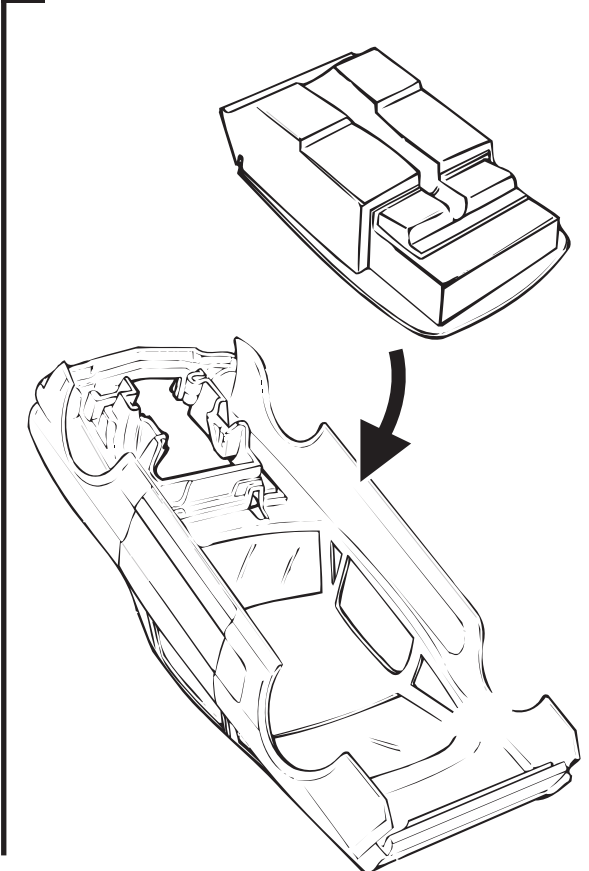
A



B

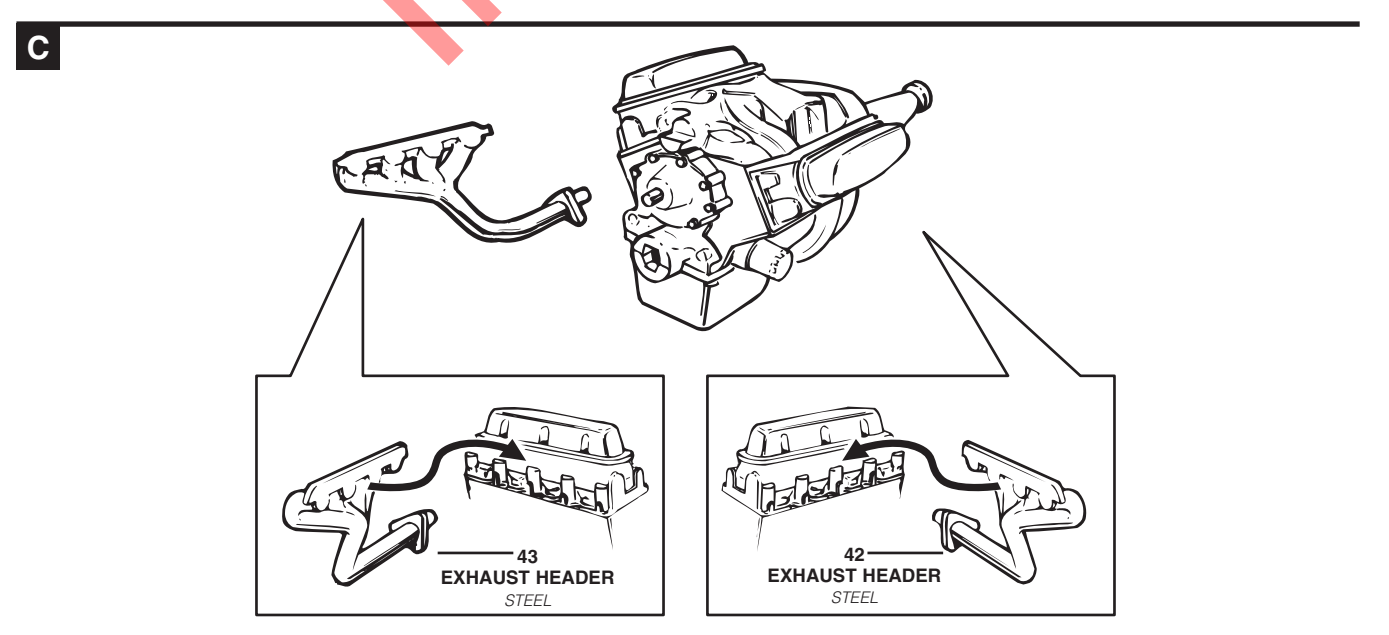
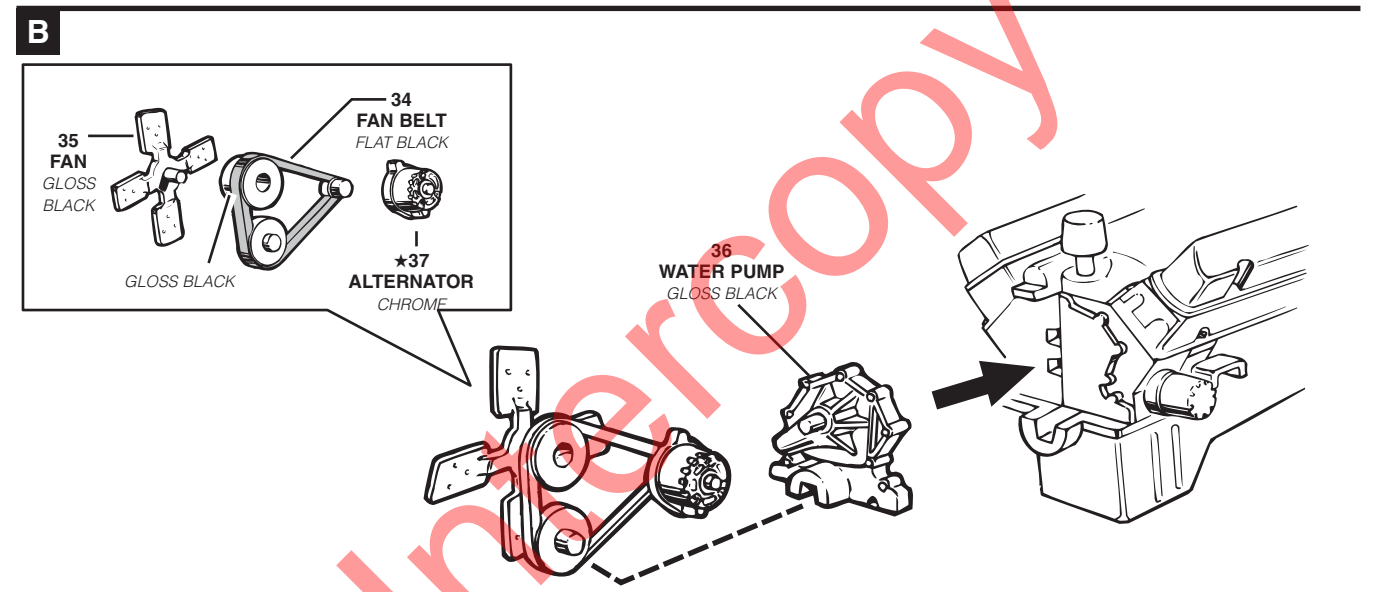
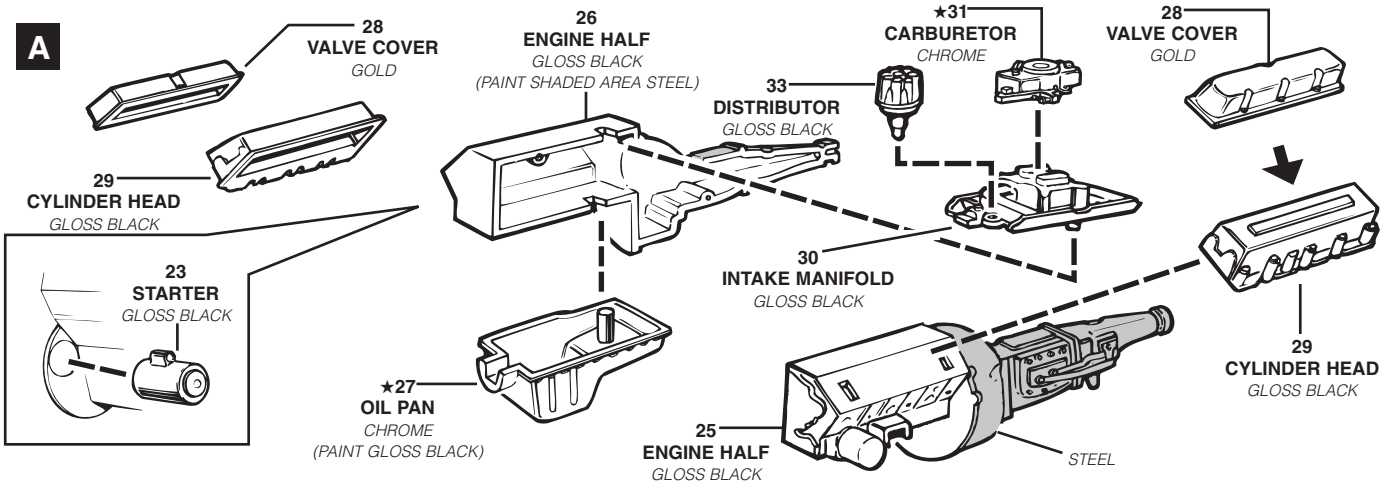


C



3

ENGINE ASSEMBLY



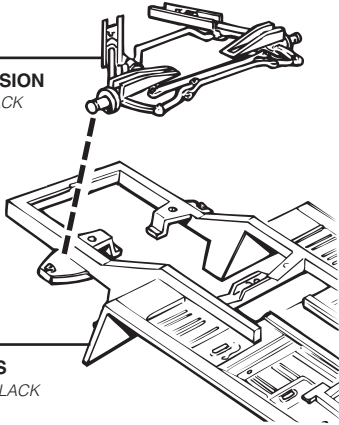
4

SUSPENSION ASSEMBLY

A

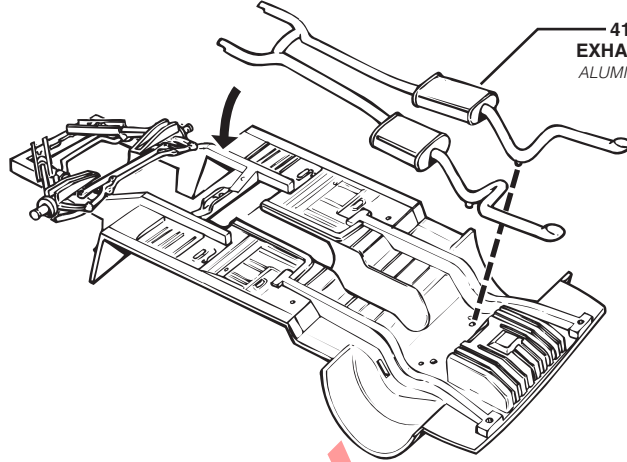
17
FRONT SUSPENSION
SEMIGLOSS BLACK

13
CHASSIS
SEMIGLOSS BLACK



B

41
EXHAUST
ALUMINUM

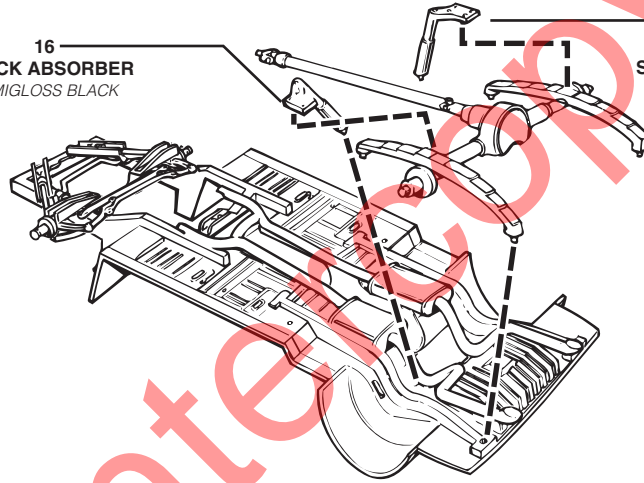


C

16
SHOCK ABSORBER
SEMIGLOSS BLACK

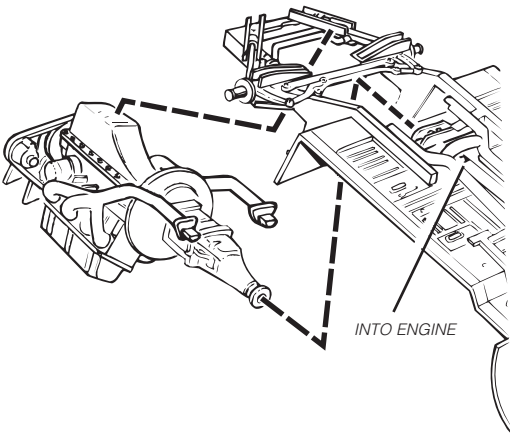
15
SHOCK ABSORBER
SEMIGLOSS BLACK

14
REAR AXLE
SEMIGLOSS BLACK



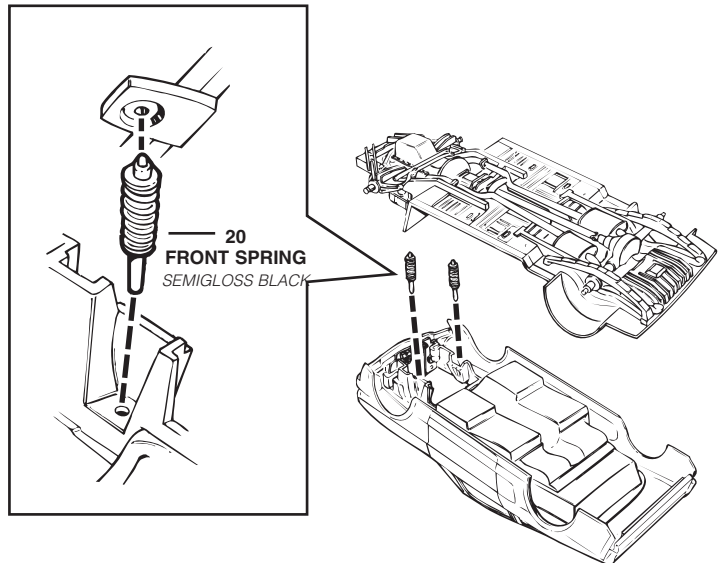
D

INTO ENGINE



E

20
FRONT SPRING
SEMIGLOSS BLACK



5

WHEEL AND TIRE ASSEMBLY

A

4X

★38
WHEEL OUTER
CHROME

200
TIRE

58
INNER WHEEL
FLAT BLACK

10

B

C



2X



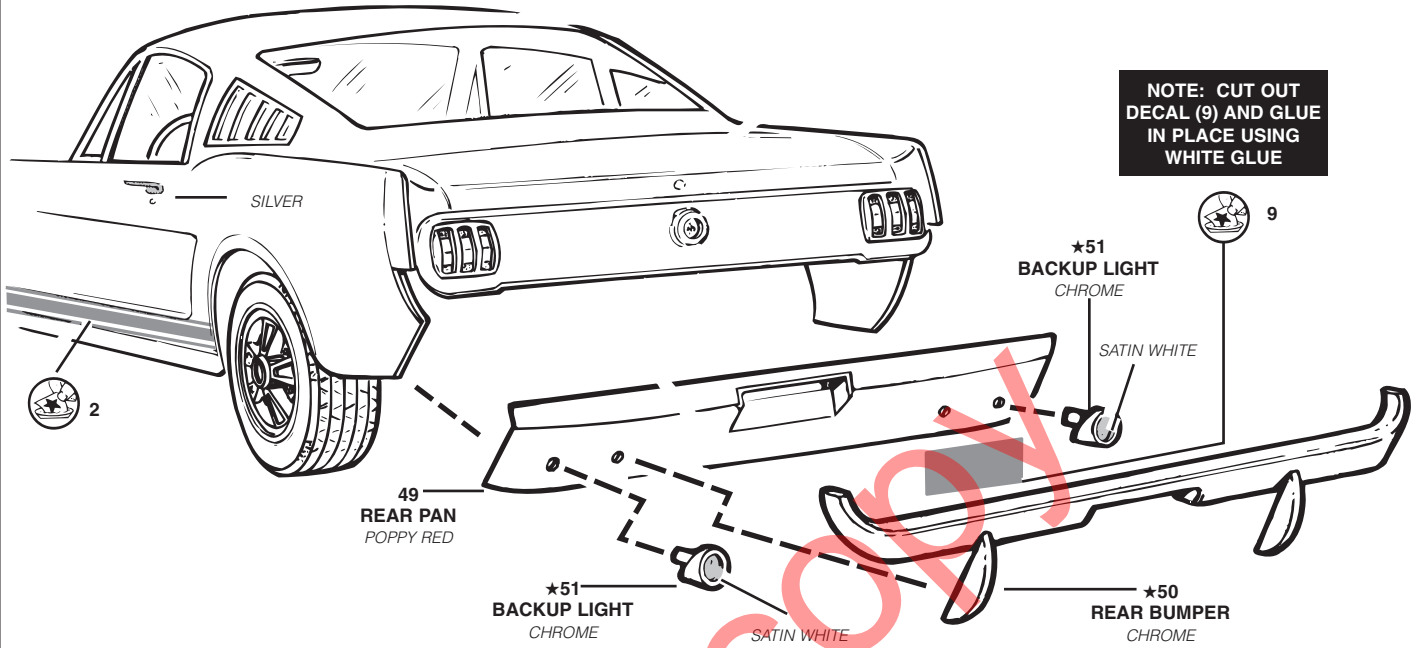
2X

Intercoopy

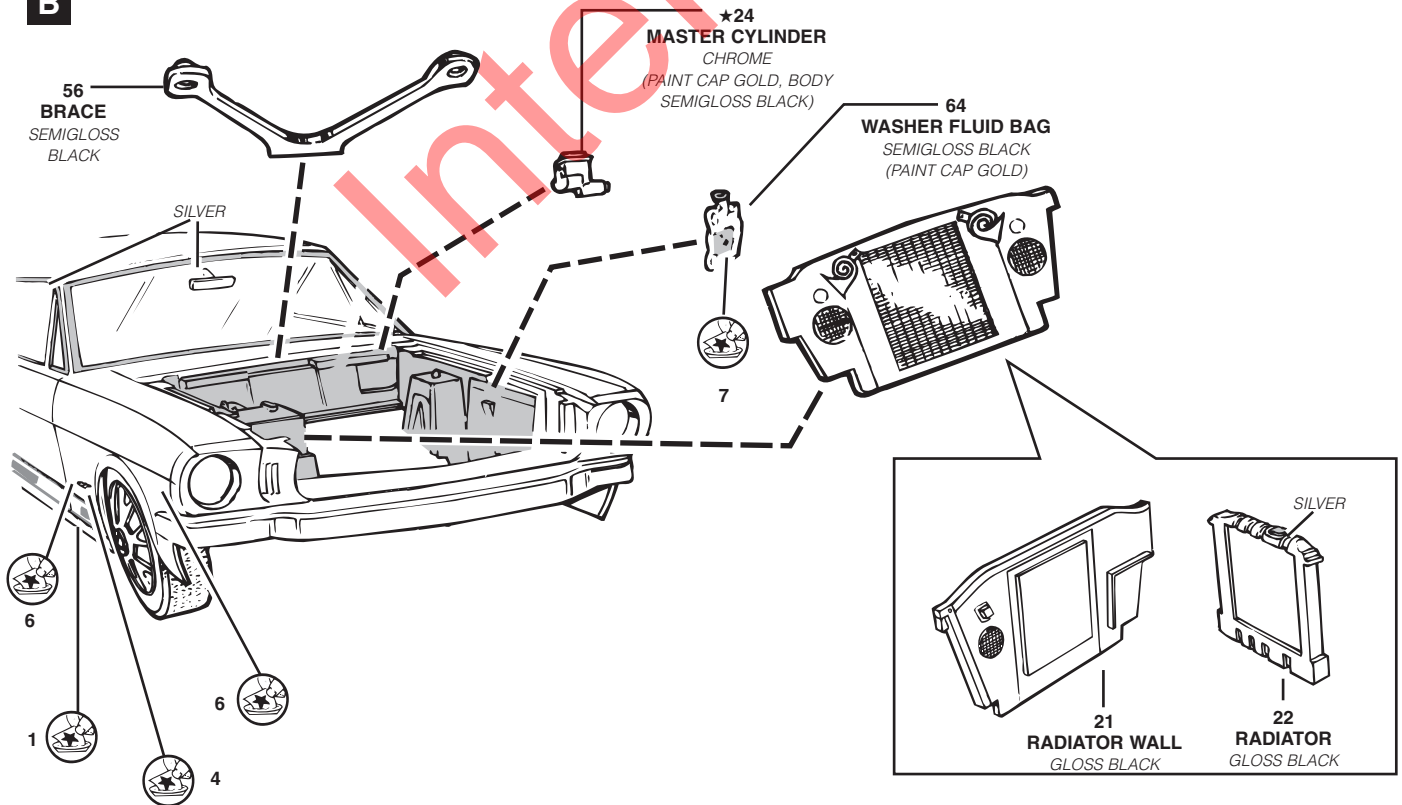
6

FINAL ASSEMBLY

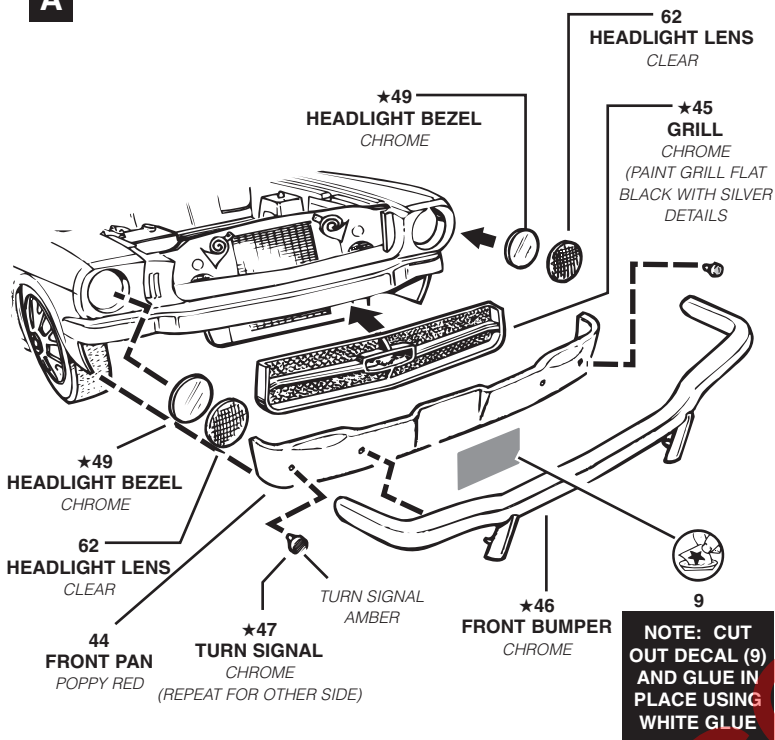
A



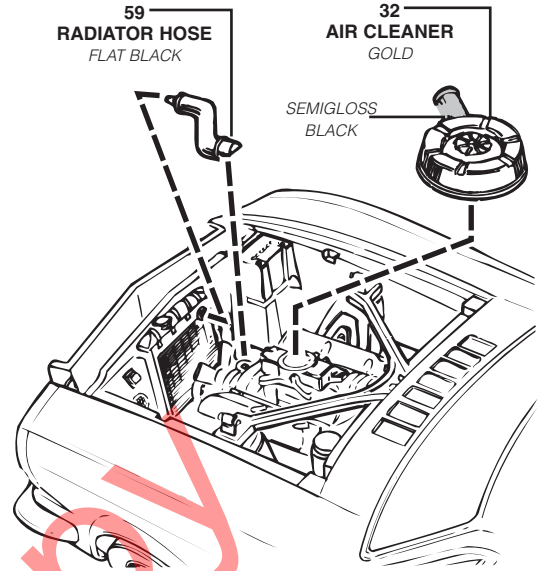
B



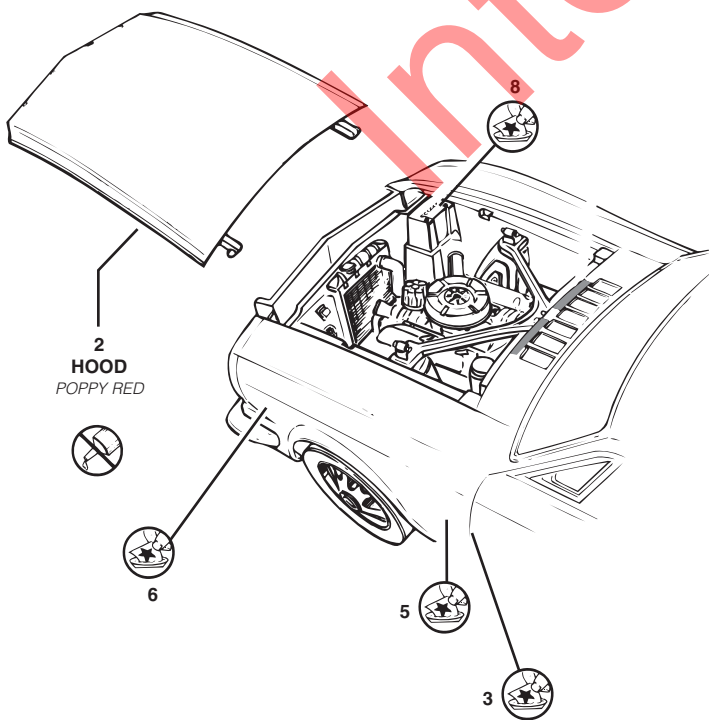
A



B



C



D

