



KIT 2845

85284500200

38 ELLIOTT SADLER

m&m's TAURUS STOCK CAR

For Elliott Sadler, this is the start of something really big. But then, Elliott is a really big guy. Like his teammate Dale Jarrett, Elliott is unusually large for a NASCAR® driver. That only means there's a bigger foot mashing down the accelerator; something Elliott has picked up quite nicely, thank you.

Like many of his peers, Elliott got his start running the small bullrings of NASCAR's® touring series. At his home track in South Boston, Virginia, Elliott was crowned Late Model Stock Car champ in 1995 at the tender age of 20. Moving up to the Grand National series, Elliott won three races and finished his rookie season in the series fifth in the standings. That feat caught the eyes of many Cup series team owners and it wasn't long before Elliott hit the big time.

With the start of the 1999 campaign, Elliott found another yellow rookie stripe on the rear bumper of his ride. Only this time it was attached to a car owned by the legendary Wood Brothers, one of NASCAR's® first teams way back in the beginning. Being a rookie in one of the most competitive sports in the world promises

some bumps along the way, but Elliott still held his own, clinching his only victory in the 2001 Food City 500 race at the always challenging Bristol Motor Speedway.

2003 finds Elliott in the best ride of his life, driving for the mighty Robert Yates owned #38 team sponsored by M&M's® brand candies. Surrounded by the best equipment money can buy, the vast experience of the Yates crews and having 1999 Champion Dale Jarrett as your mentor and teammate will do wonders for your driving ability. So far in 2003, Elliott has been using up every bit of that expertise-nine Top 10 finishes including two Top 5's and two pole positions. Elliott was in the front pack at the EA 500 at Talladega vying for the win when he was bumped at 190 mph, sending the M&M's® Taurus barrel-rolling wildly. It was one of those crashes that appears on all the newscasts and in all the papers. Elliott crawled out, shaken but unhurt. Like we said, a big guy indeed.



* REPEAT SEVERAL TIMES
* A REPETER PLUSIEURS FOIS



* OPTIONAL PARTS
* PIECES EN OPTION



* DECAL
* DECAL COMANIE



* ALTERNATIVE ASSEMBLY
* ENSEMBLAGE ALTERNATIVE



* CEMENT TOGETHER
* A COLLER



* REMOVE AND THROW AWAY
* A RETIRER ET JETER



* DO NOT CEMENT
* NE PAS COLLER

READ THIS BEFORE YOU BEGIN

- * Study the assembly drawings.
- * Each plastic part is identified by a number.
- * For better paint and decal adhesion, wash the plastic parts in a mild detergent solution. Rinse and let air dry.
- * Check the fit of each piece before cementing in place.
- * Use only cement for polystyrene plastic.
- * Scrape plating and paint from areas to be cemented.
- * Allow paint to dry thoroughly before handling parts.
- * Any unused parts may be discarded.

DECAL APPLICATION INSTRUCTIONS

1. Cut desired decal from sheet.
2. Dip decal in water for a few seconds.
3. Place wet decal on paper towel.
4. Wait until decal is movable on paper backing.
5. Place decal in position on model, face up and slide backing away.
6. Press out air bubbles with a soft damp cloth.
7. Milkyness that may appear is for better decal adhesion and will dry clear. Wipe away any excess adhesive.
8. Do not touch decal until fully dry.
9. Allow the decals 48 hours to dry before applying clear coat.

NOTE: Decals are compatible with setting solutions or solvents.

LIRE CE QUI SUIT AVANT DE COMMENCER

- * Etudier les schémas de montage.
- * Chaque pièce en plastique est identifiée par un numéro.
- * Pour une meilleure prise de la peinture et des autocollants, laver les pièces en plastique avec une solution détergente peu concentrée. Les rincer et les laisser sécher à l'air.
- * Vérifier que chaque pièce s'ajuste bien avant de la coller en place.
- * N'utiliser que de la colle pour polystyrène.
- * Gratter les parties à coller pour enlever le chrome et la peinture.
- * Laisser la peinture bien sécher avant de manipuler les pièces.
- * Toute pièce inutilisée peut être jetée.

DIRECTIVES D'APPLICATION DES AUTOCOLLANTS

1. Découper l'autocollant désiré de la feuille.
2. Tremper l'autocollant dans de l'eau pendant quelques secondes.
3. Placer l'autocollant mouillé sur une serviette en papier.
4. Attendez que l'autocollant puisse être déplacé sur son support en papier.
5. Mettre l'autocollant en position sur le modèle face sur le dessus et faire glisser le support pour l'enlever.
6. Appuyer avec un chiffon doux humide pour éliminer les bulles d'air.
7. La substance laiteuse qui peut apparaître est destinée à améliorer l'adhésion de l'autocollant et devient incolore au séchage. Essuyer pour enlever tout excédent d'adhésif.
8. Ne pas toucher l'autocollant tant qu'il n'est pas bien sec.
9. Laisser l'autocollant sécher pendant 48 heures avant d'appliquer une couche transparente.

REMARQUE: Les autocollants sont compatibles avec

This paint guide is provided to complete this kit as shown on the box.

Ce guide de peinture est fourni pour reproduire le modèle réduit qui apparaît sur la boîte.

Aluminum	Aluminum
Flat Black	Noir mat
Flat White	Blanc mat
Gloss Black	Noir brillant
Gloss Dark Blue	Bleu foncé brillant
Gloss Gray	Gris brillant
Gloss Red	Rouge brillant
Gloss Yellow	Jaune brillant
Jet Exhaust	Flux d'éjection
Rust	Rouille
Semigloss Black	Noir satiné
Steel	Acier
Transparent Blue	Bleu transparent
Transparent Red	Rouge transparent

If you have any questions or comments, call our hotline at: **(800) 833-3570** or, please write to:

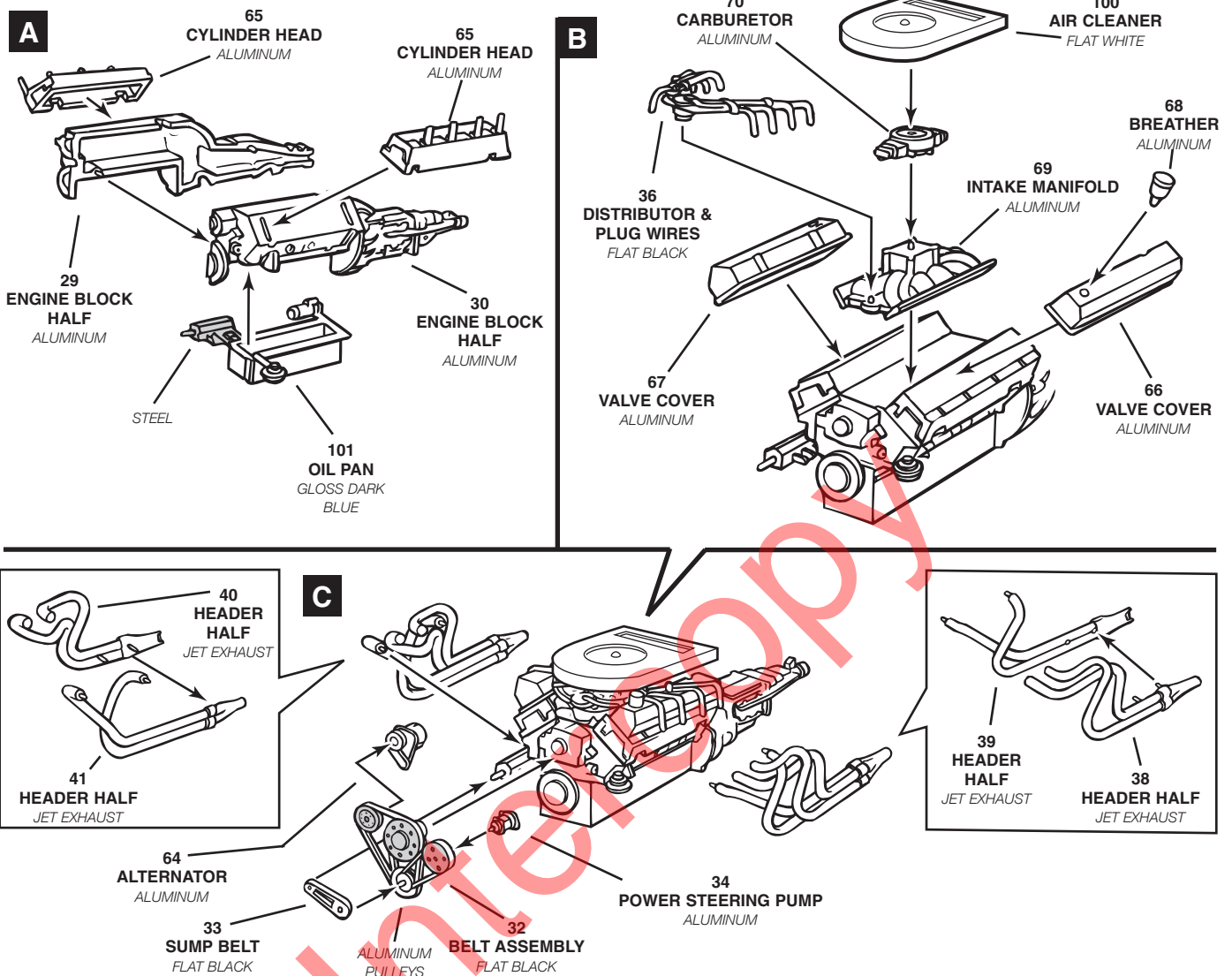
Revell-Monogram Consumer Service Department, 725 Landwehr, Northbrook, Illinois 60062

Be sure to include the plan number (85284500200), part number, description, your return address and phone number.

Visit our website: www.revell-monogram.com

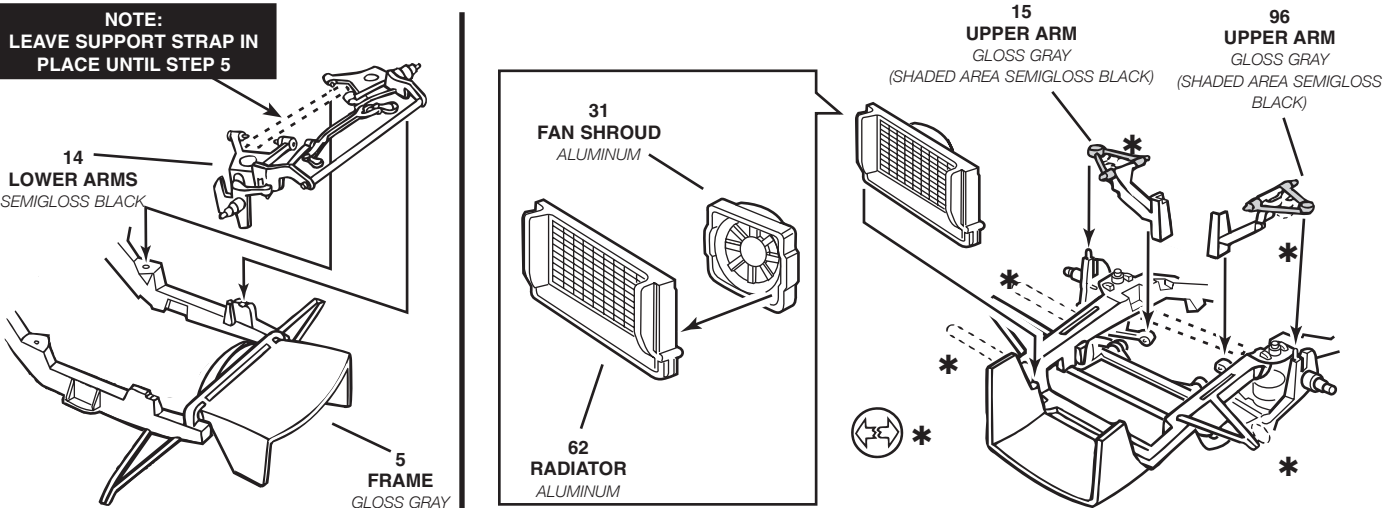
1

ENGINE ASSEMBLY



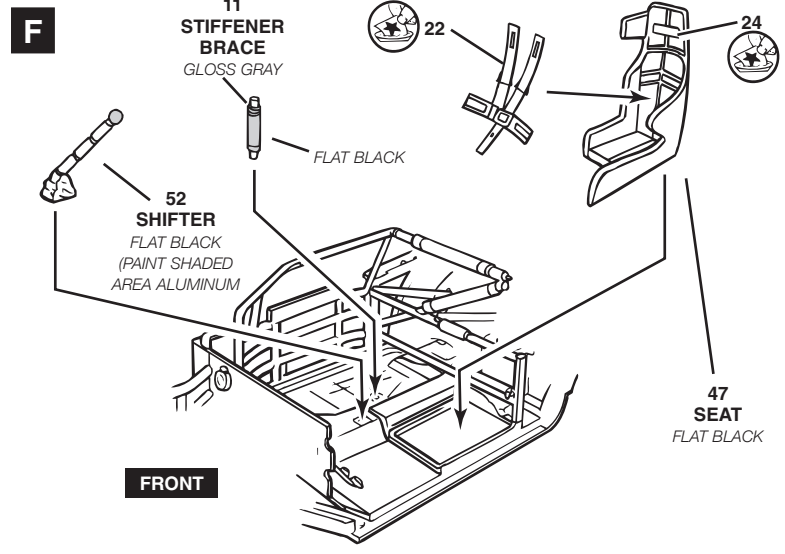
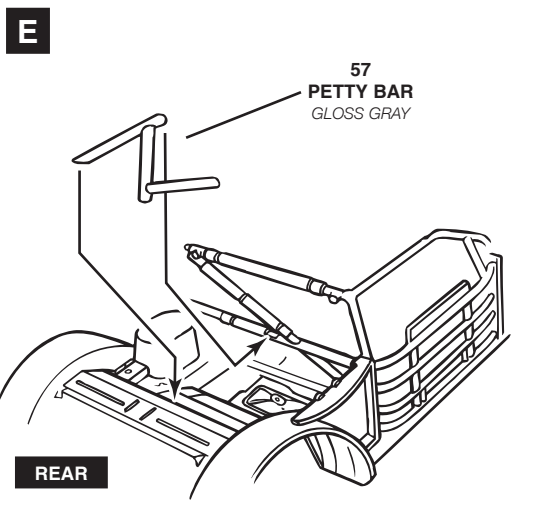
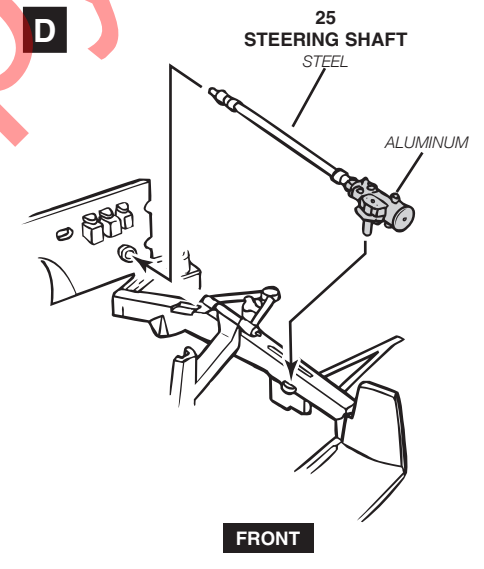
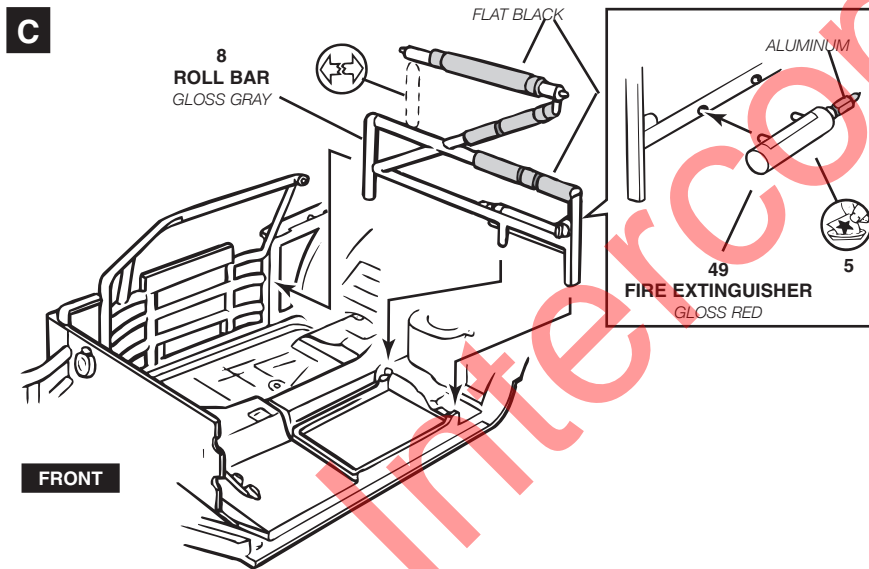
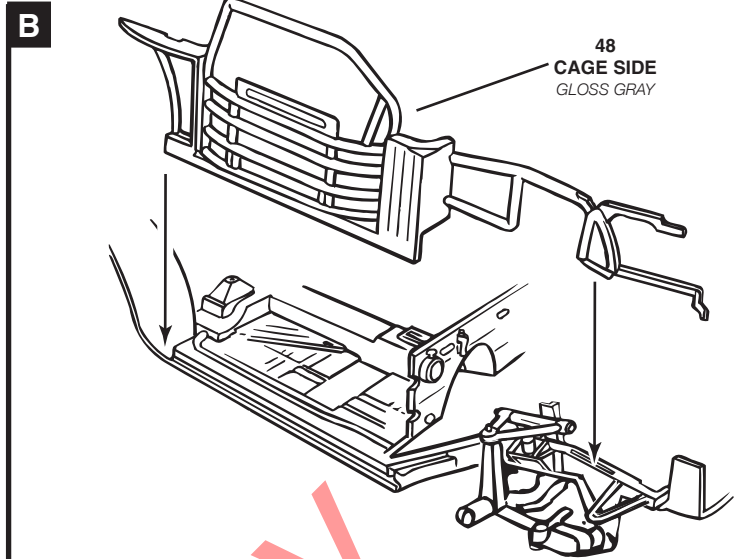
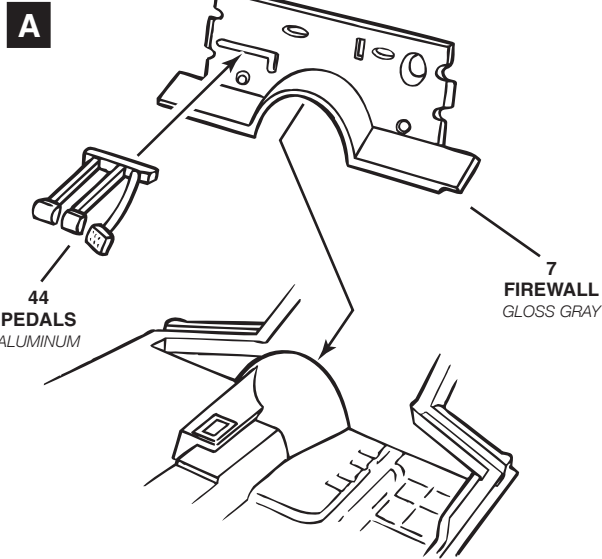
2

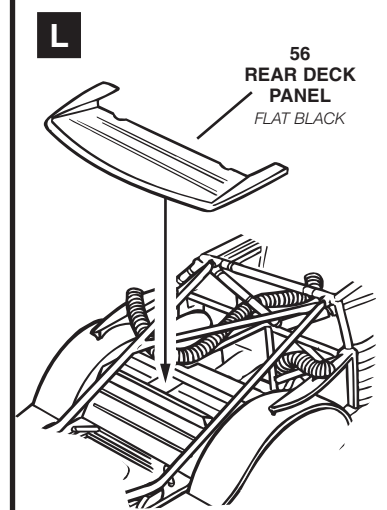
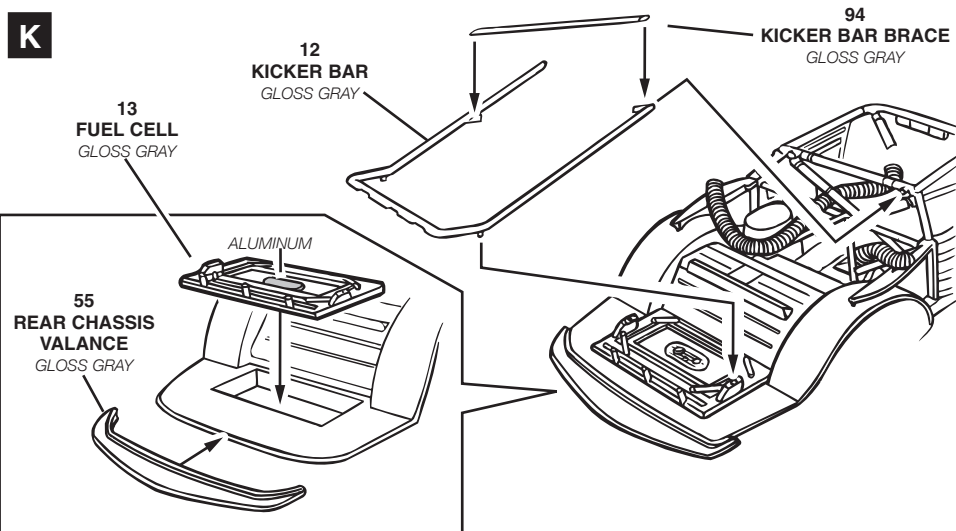
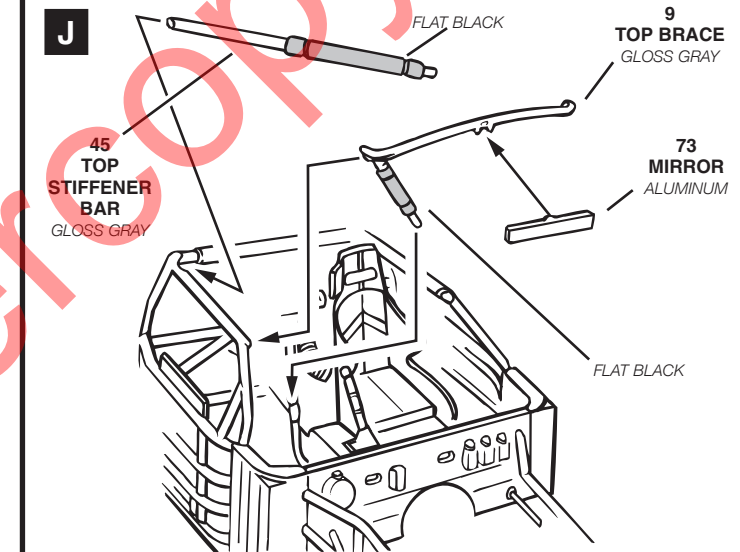
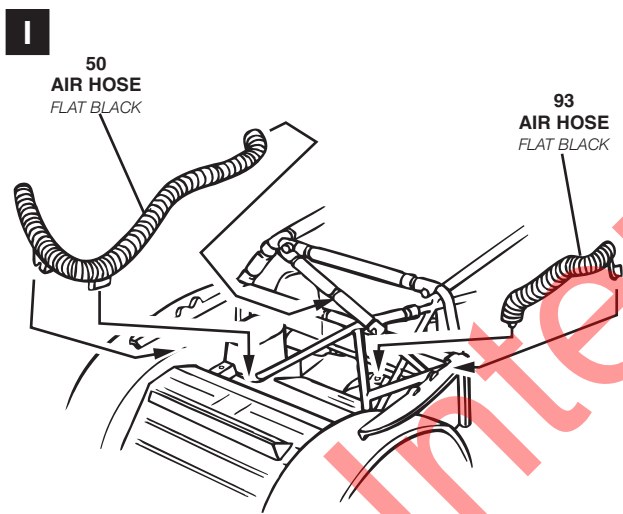
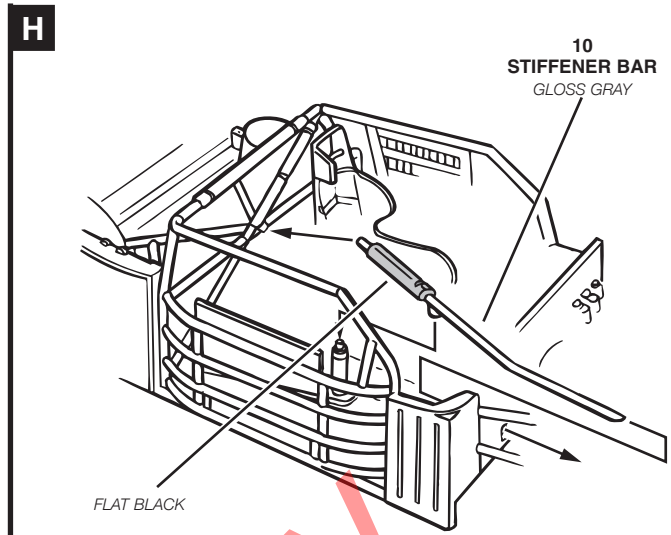
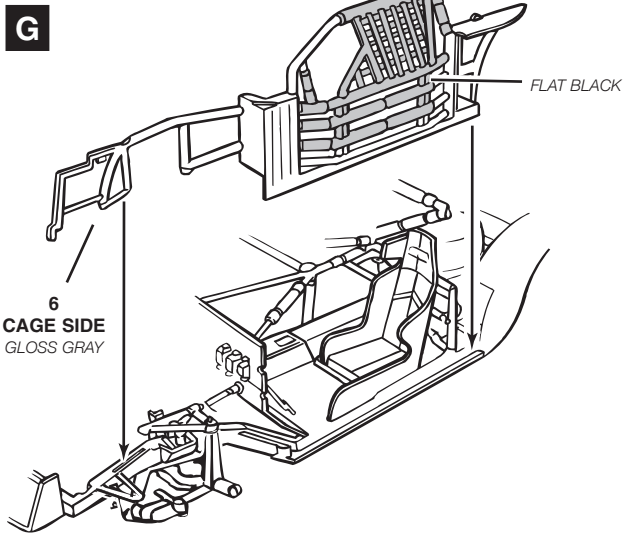
RADIATOR / SUSPENSION ASSEMBLY



3

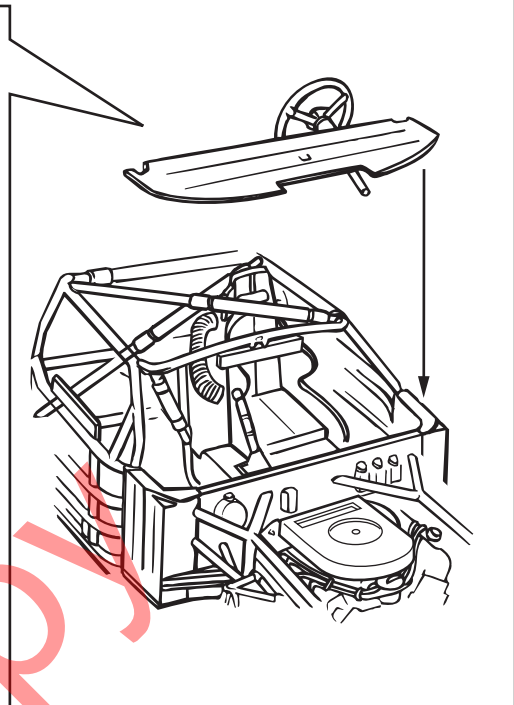
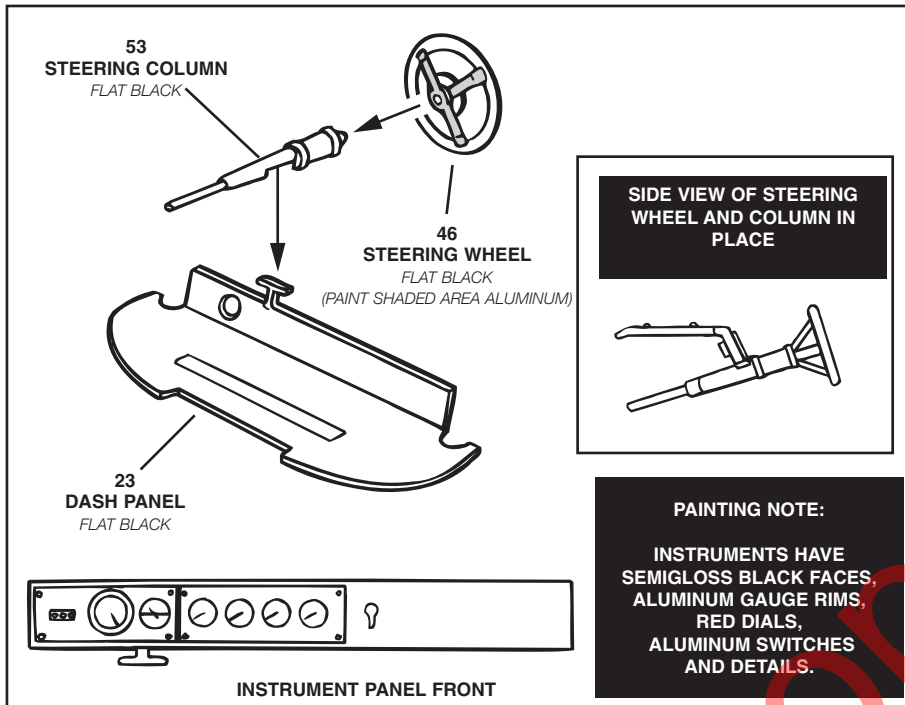
CHASSIS ASSEMBLY





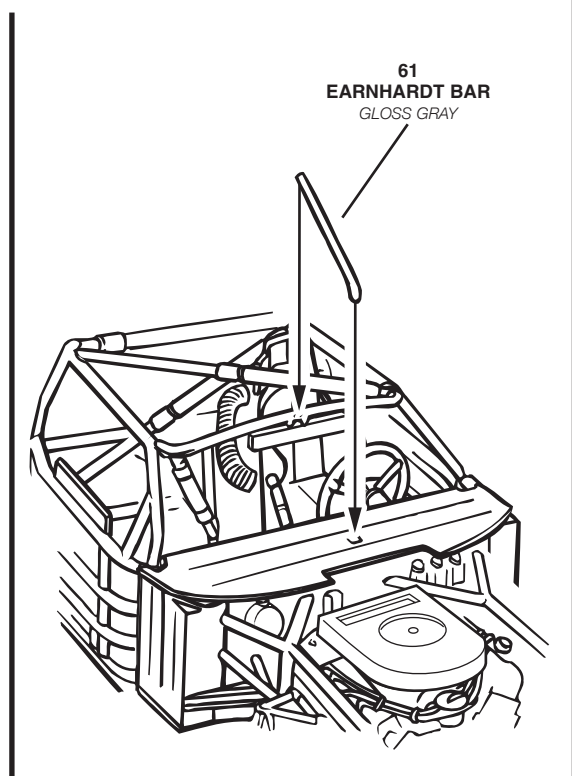
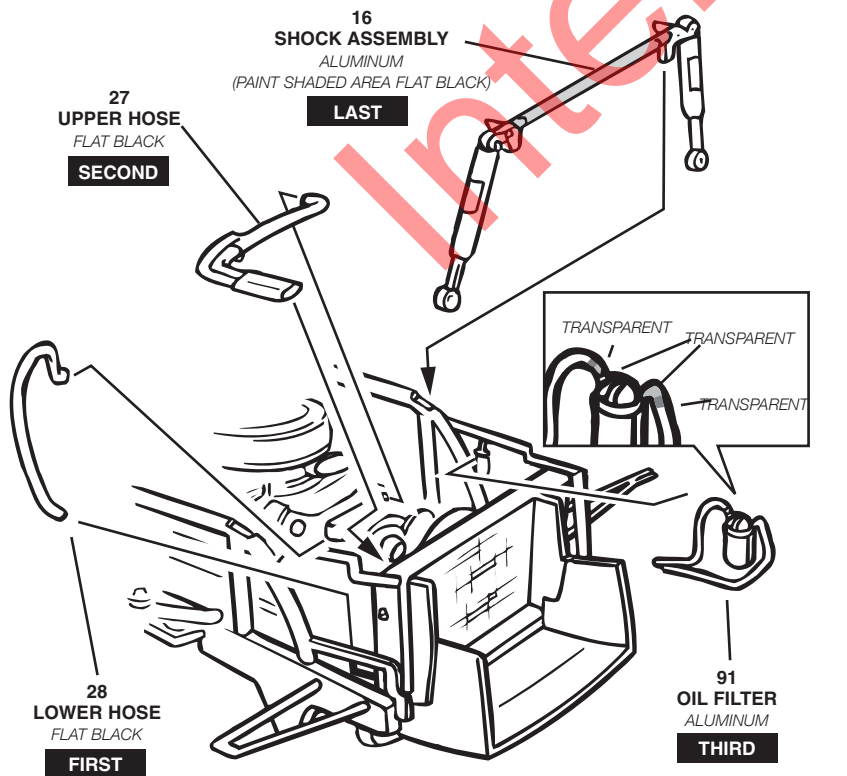
6

DASH PANEL ASSEMBLY



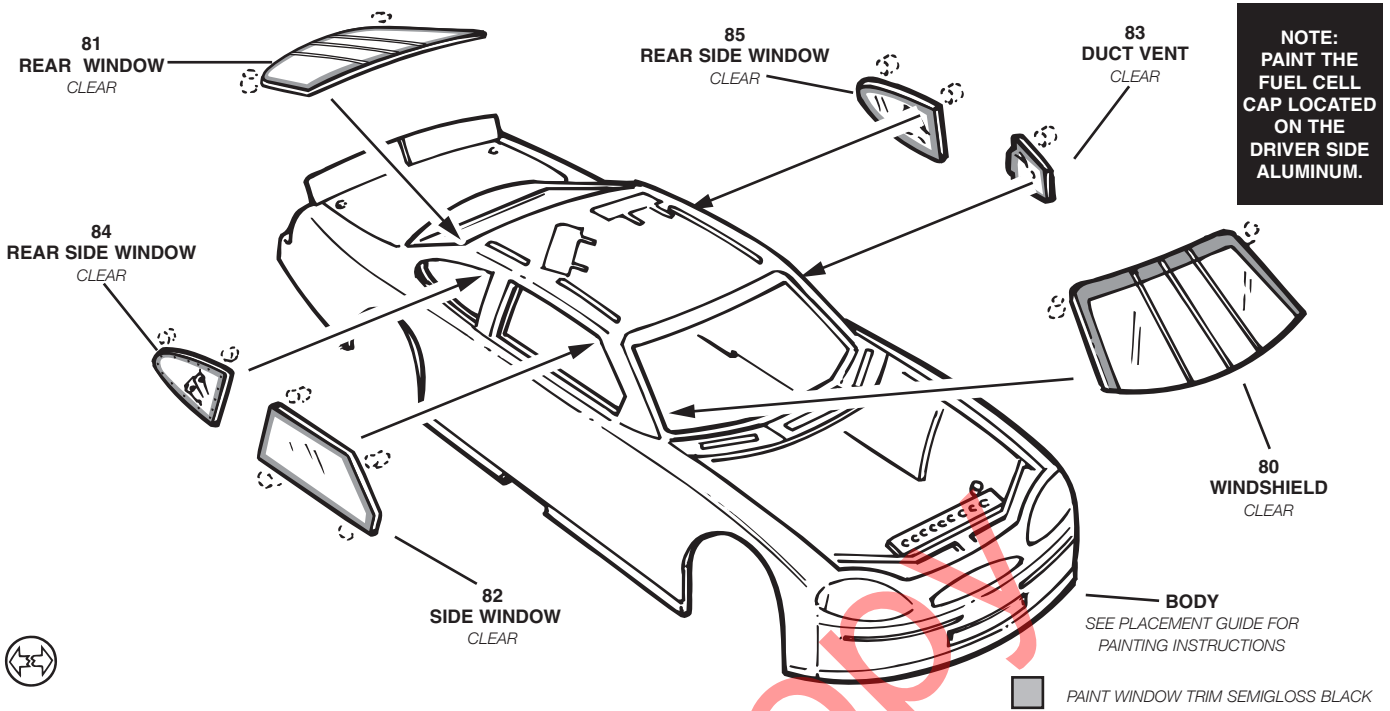
7

FRONT END ASSEMBLY



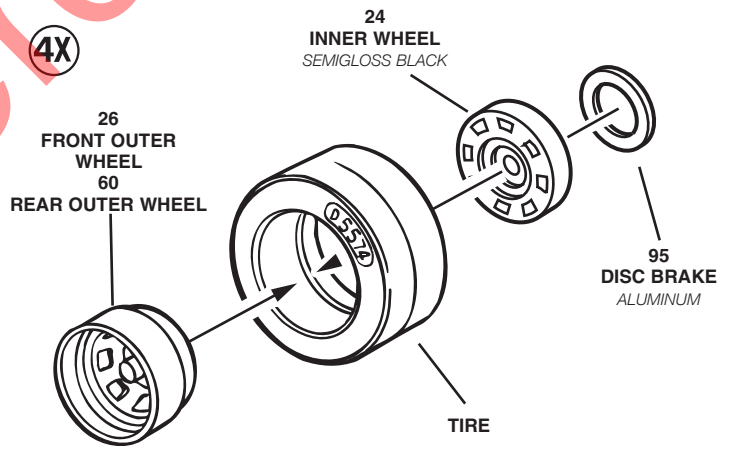
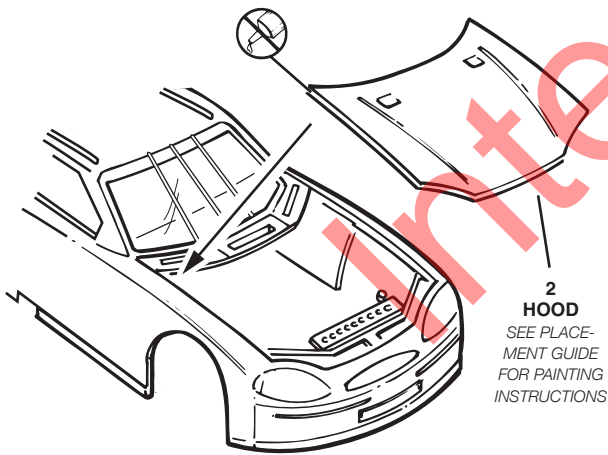
8

WINDOW ASSEMBLY

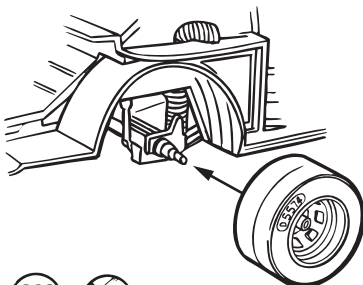


9

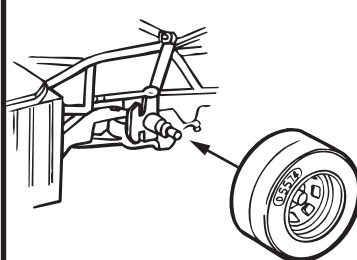
FINAL CHASSIS / BODY ASSEMBLY



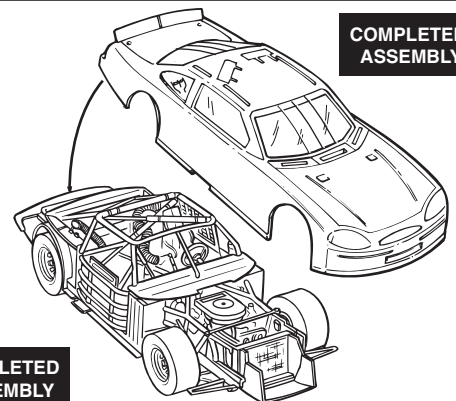
REAR



FRONT

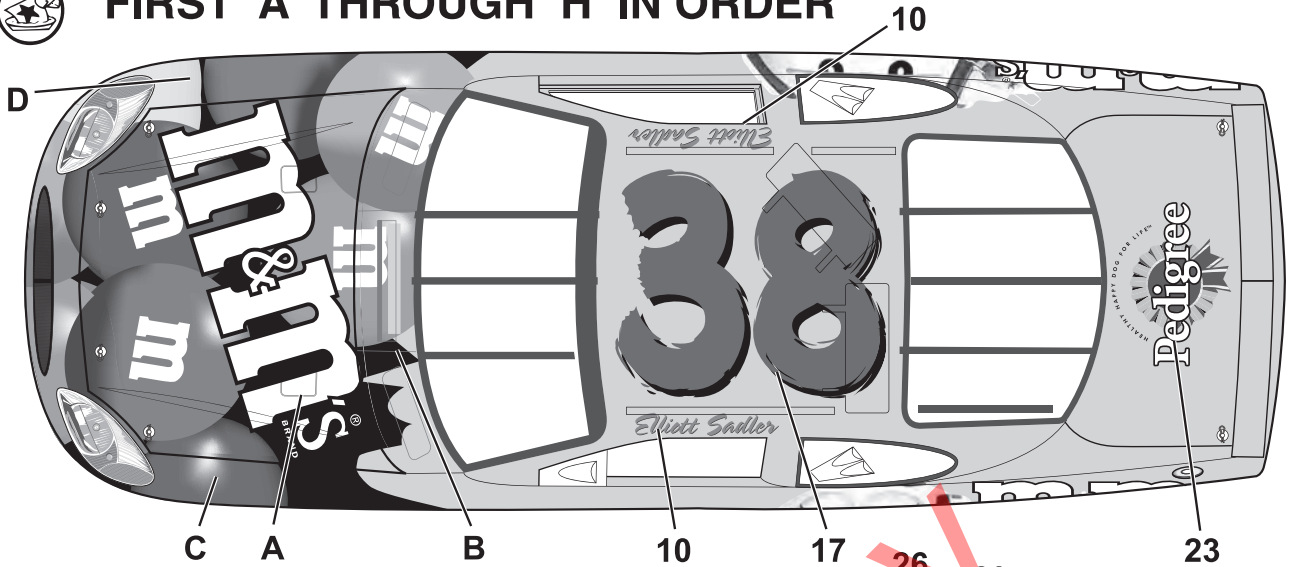


COMPLETED ASSEMBLY

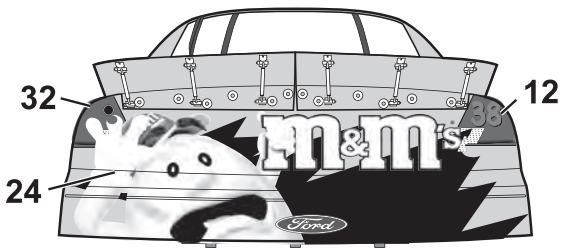
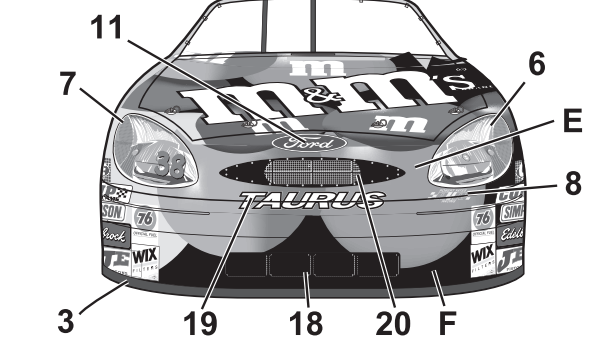
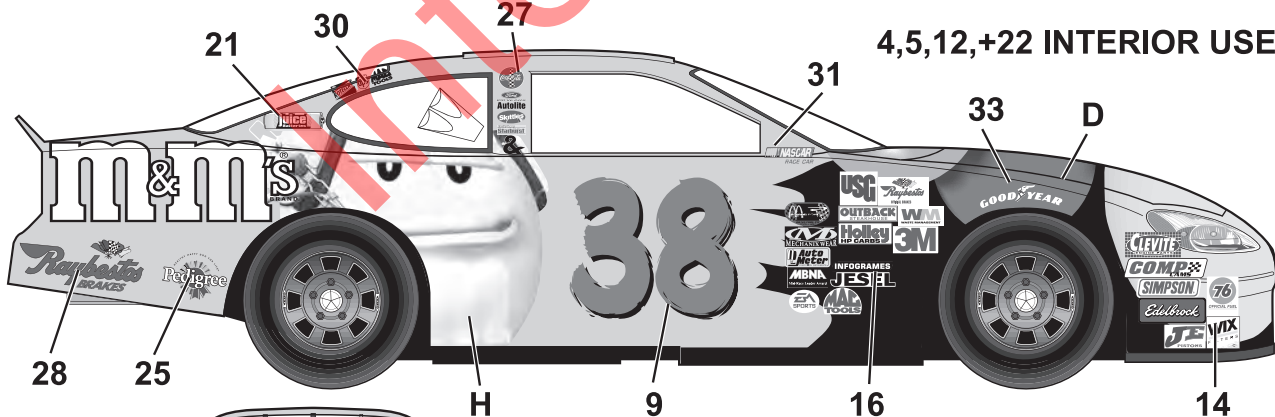
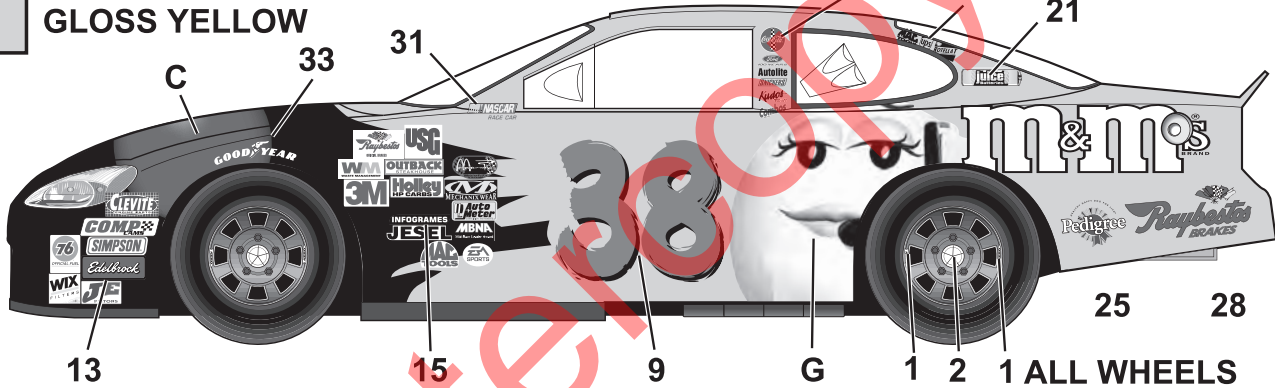




FIRST A THROUGH H IN ORDER



GLOSS YELLOW



12+32 APPLY BEFORE 24!

4,5,12,+22 INTERIOR USE

1 ALL WHEELS